

LOC/DME I-EKW 110.9 Chan 46	APP CRS 289°	Rwy Idg TDZE Apt Elev	7001 990 1009
--	------------------------	-----------------------------	--

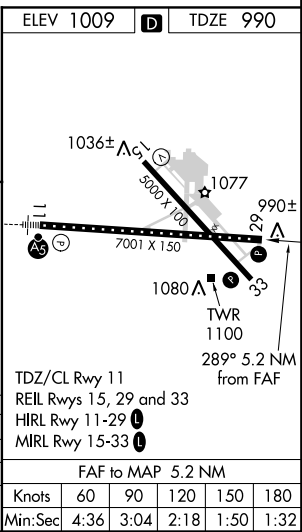
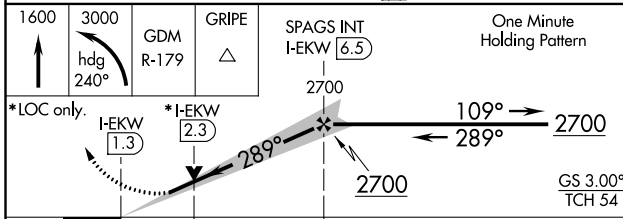
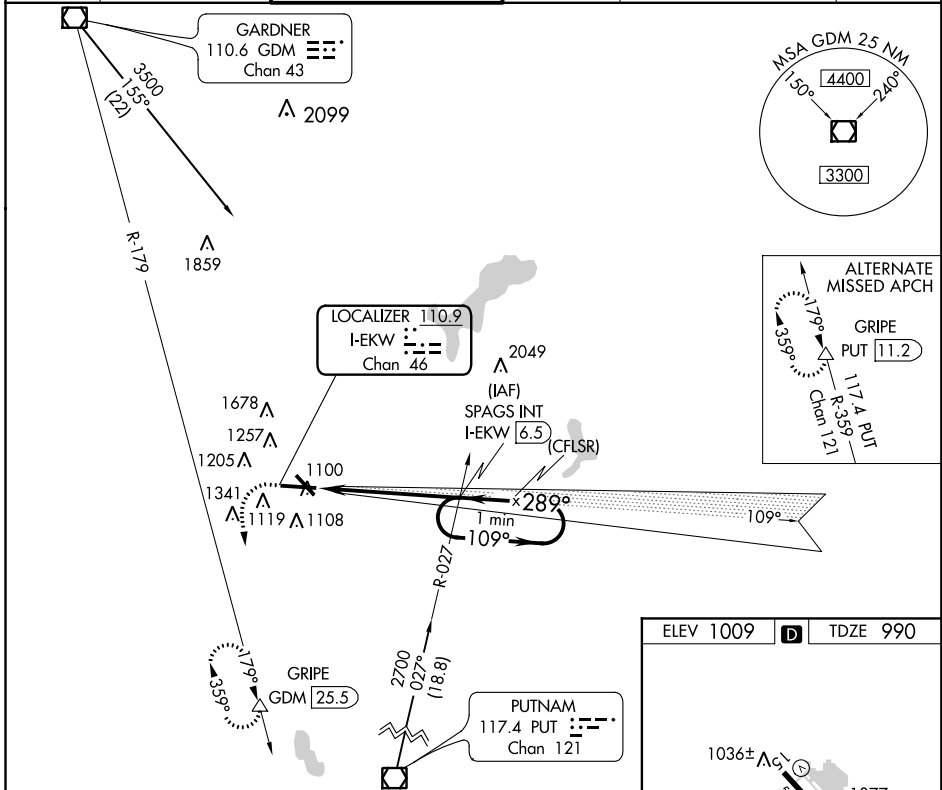
ILS or LOC RWY 29

WORCESTER RGNL (ORH)

⚠ DME required. VDP NA with Bedford altimeter setting. When local altimeter setting not received, use Bedford altimeter setting and increase all DA 189 feet and all MDA 200 feet; increase S-ILS 29 all Cats visibility to 1¼, increase S-LOC 29 Cats C/D visibility to 1¾, and Circling Cat B to 1¼, Cat C to 2¾. Autopilot coupled approach NA below 1266 feet.

MISSED APPROACH: Climb to 1600 then climbing left turn to 3000 on heading 240° and on GDM VOR/DME R-179 to GRIPE/GDM 25.5 DME and hold.

ATIS 126.55	BRADLEY APP CON 119.0 327.1	WORCESTER TOWER★ 120.5 (CTAF) 263.0	GND CON 123.85	CLNC DEL 128.65 119.0 (when tower closed)	UNICOM 122.95
-----------------------	---------------------------------------	---	--------------------------	---	-------------------------



CATEGORY	A	B	C	D
S-ILS 29		1190/40	200 (200-¾)	
S-LOC 29		1380/55	390 (400-1¼)	
CIRCLING	1560-1 551 (600-1)	1640-1 631 (700-1)	1720-2 711 (800-2)	1980-3 971 (1000-3)

NE-1, 09 NOV 2017 to 07 DEC 2017

NE-1, 09 NOV 2017 to 07 DEC 2017