

LOC/DME I-RSR 110.9 Chan 46	APP CRS 109°	Rwy ldg TDZE Apt Elev 7001 980 1009
--	------------------------	---

ILS or LOC RWY 11

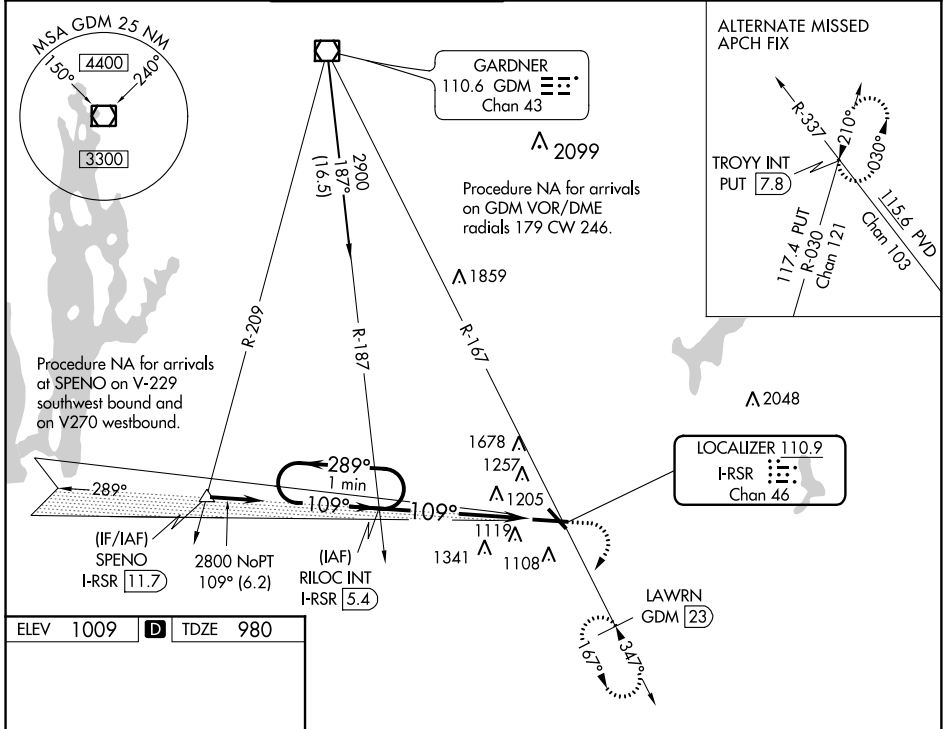
WORCESTER RGNL (ORH)

▼ DME required.
▲ For inop MALSRL, increase S-LOC 11 Cat C/D visibility to 1 3/8 SM.

MALSRL
A6

MISSED APPROACH: Climb to 1800 then climbing right turn to 3000 on heading 230° and GDM VOR/DME R-167 to LAWRN/GDM 23 DME and hold, continue climb-in-hold to 3000.

ATIS 126.55	BRADLEY APP CON 119.0 327.1	WORCESTER TOWER★ 120.5 (CTAF) 263.0	GND CON 123.85	CLNC DEL 128.65 119.0 (when tower closed)	UNICOM 122.95
-----------------------	---------------------------------------	---	--------------------------	---	-------------------------



ELEV 1009	D	TDZE 980
-----------	----------	----------

1036± A6
5000 X 100
7001 X 150
1077
1080 A
TWR 1100

109° 5.5 NM from FAF

TDZ/CL Rwy 11
REIL Rws 15, 29 and 33
HIRL Rwy 11-29
MIRL Rwy 15-33

FAF to MAP 5.5 NM

Knots	60	90	120	150	180
Min:Sec	5:30	3:40	2:45	2:12	1:50

One Minute Holding Pattern

RILOC INT I-RSR 5.4

1800
3000
GDM R-167
LAWRN GDM 23

2800
2800
2800

289°
109°
109°

GS 3.00°
TCH 55

4 NM
1.5 NM

* I-RSR 1.4
* LOC only.

CATEGORY	A	B	C	D
S-ILS 11		1180/18	200 (200-1/2)	
S-LOC 11	1500/24	520 (500-1/2)	1500/55	520 (500-1/4)
C CIRCLING	1560-1 551 (600-1)	1720-1 711 (800-1)	2000-3	991 (1000-3)

NE-1, 09 NOV 2017 to 07 DEC 2017

NE-1, 09 NOV 2017 to 07 DEC 2017