

APP CRS	Rwy Idg	2919
067°	TDZE	7
	Apt Elev	7

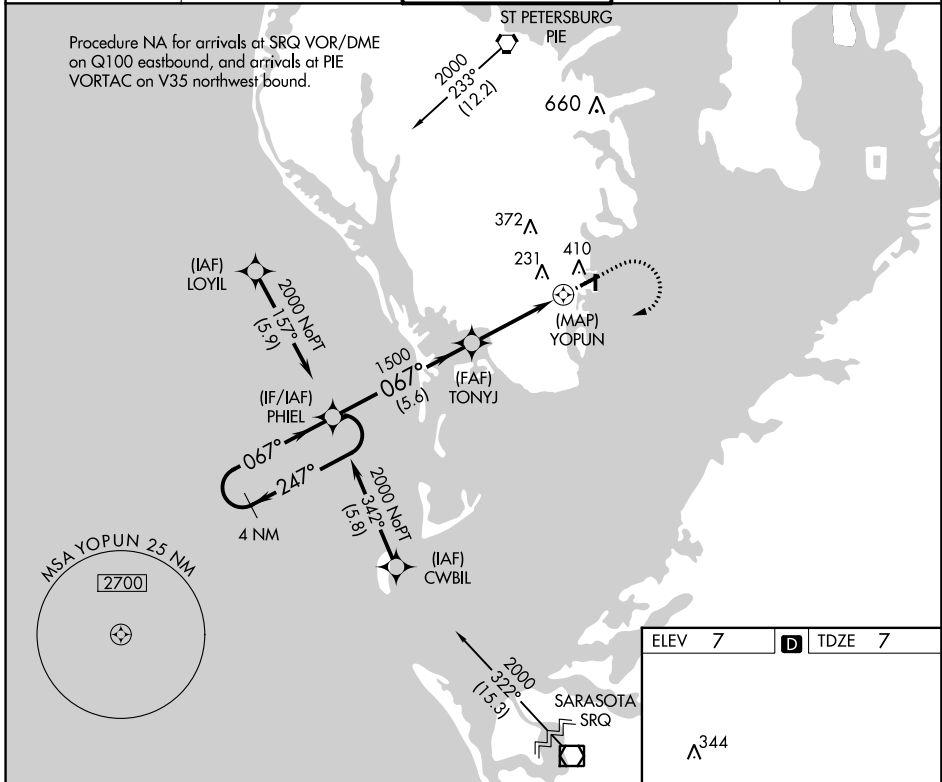
RNAV (GPS) RWY 7

ALBERT WHITTED (SPG)

▼ Night landing: Rwy 36 NA. DME/DME RNP-0.3 NA. Helicopter visibility reduction below 1 SM NA. When local altimeter setting not received, use Tampa Intl altimeter setting and increase all MDA 40 feet, LNAV Cat C visibility 1/8 mile and Circling Cat C visibility 1/4 mile.

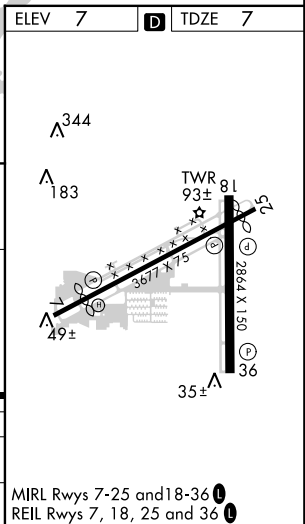
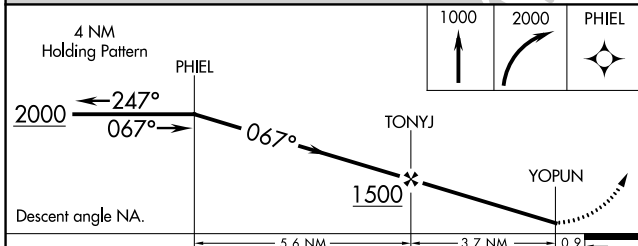
▲ MISSED APPROACH: Climb to 1000 then climbing right turn 2000 direct PHIEL and hold.

ASOS 118.875	TAMPA APP CON 119.65 316.05 (EAST) 125.3 316.05 (WEST)	ALBERT WHITTED TOWER * 127.4 (CTAF) 0 257.6	GND CON 121.8	UNICOM 122.95
------------------------	--	---	-------------------------	-------------------------



SE-3, 09 NOV 2017 to 07 DEC 2017

SE-3, 09 NOV 2017 to 07 DEC 2017



CATEGORY	A	B	C	D
LNAV MDA	660-1	653 (700-1)	660-1 1/8 653 (700-1 1/8)	NA
CIRCLING	720-1	713 (800-1)	720-2 713 (800-2)	NA

MIRL Rwy 7-25 and 18-36
REIL Rwy 7, 18, 25 and 36