

ST. PETERSBURG, FLORIDA

AL-613 (FAA)

16259

APP CRS	Rwy Idg	2864
005°	TDZE	6
	Apt Elev	7

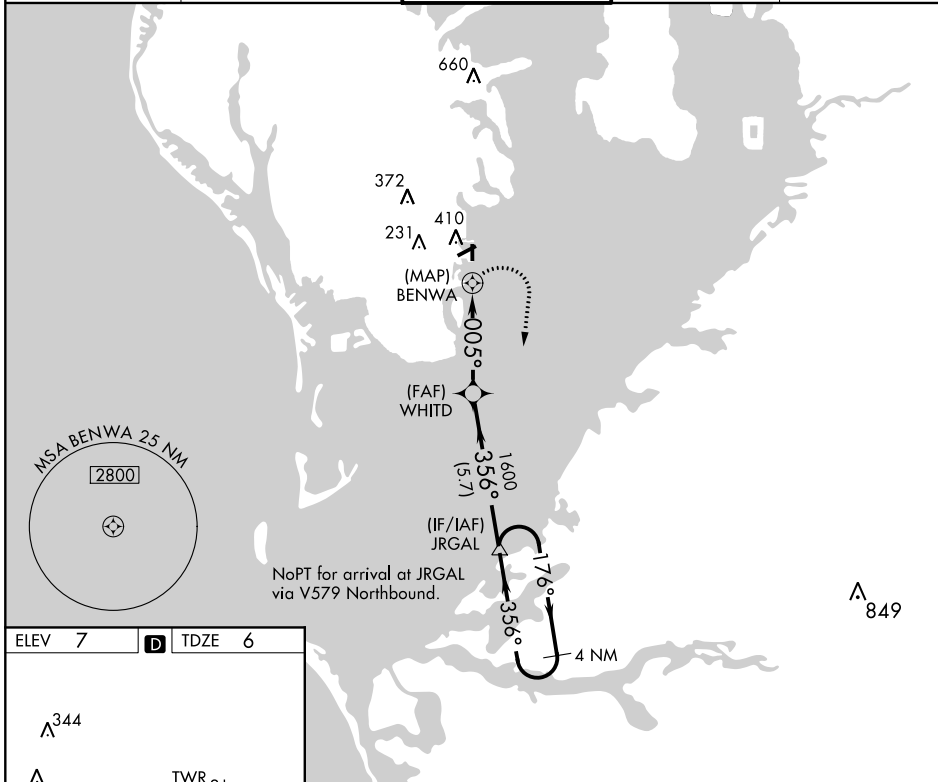
RNAV (GPS) RWY 36

ALBERT WHITTED (SPG)

▼ DME/DME RNP-0.3 NA. Procedure NA at night. Visibility reduction by helicopters NA. When local altimeter setting not received, use Tampa Intl altimeter setting and increase all MDA 40 feet and Circling Cat B visibility 1/4 mile.

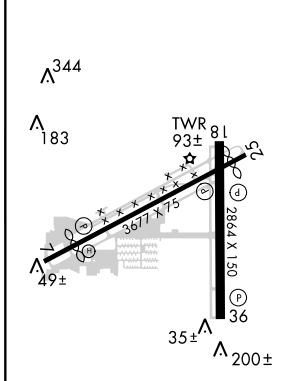
▲ MISSED APPROACH: Climbing right turn to 2000 direct JRGAL and hold.

ASOS 118.875	TAMPA APP CON 119.65 316.05 (EAST) 125.3 316.05 (WEST)	ALBERT WHITTED TOWER * 127.4 (CTAF) 0 257.6	GND CON 121.8	UNICOM 122.95
------------------------	--	---	-------------------------	-------------------------

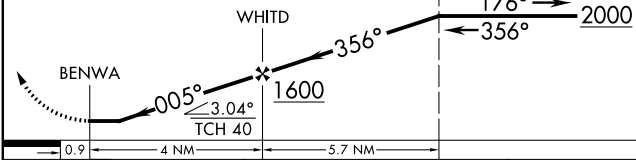


SE-3, 09 NOV 2017 to 07 DEC 2017

ELEV 7	D TDZE 6
--------	-----------------



2000	JRGAL	VGSI and descent angles not coincident (VGSI Angle 4.00/TCH 40).	4 NM Holding Pattern
------	-------	--	----------------------



CATEGORY	A	B	C	D
LNAV MDA	500-1	494 (500-1)	NA	
CIRCLING	720-1	713 (800-1)	NA	

MIRL Rwy 7-25 and 18-36
REIL Rwy 7, 18, 25 and 36

ST. PETERSBURG, FLORIDA
Amdt 1 25SEP08

27°46'N-82°38'W

ALBERT WHITTED (SPG)

RNAV (GPS) RWY 36