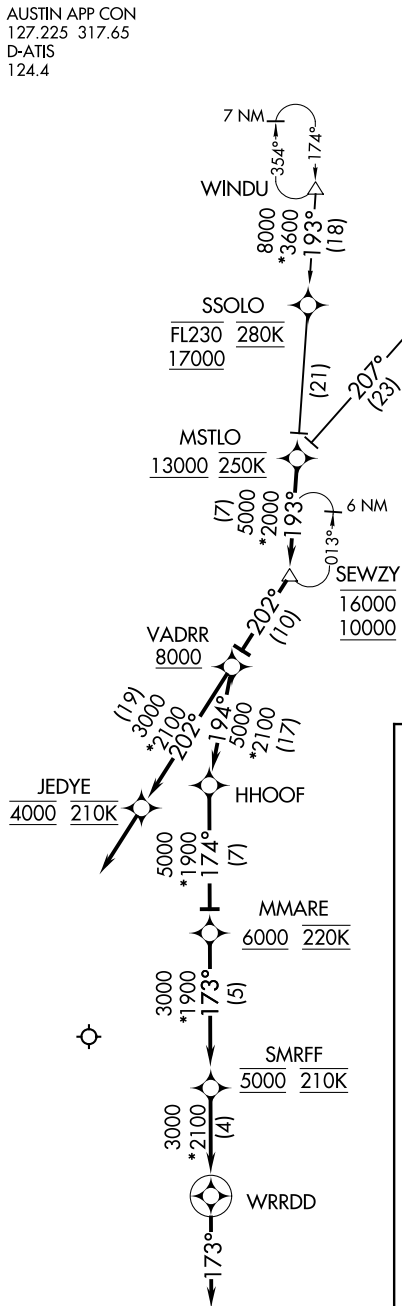


SEWZY THREE ARRIVAL (RNAV)

AUSTIN APP CON
127.225 317.65
D-ATIS
124.4



- NOTE: RADAR required.
- NOTE: RNAV 1.
- NOTE: DME/DME/IRU or GPS required.
- NOTE: Turbojet and turboprop aircraft only.
- NOTE: Expect "descend via" clearance and landing direction assignment by ARTCC. Austin approach will assign landing runway.
- NOTE: Landing south indicates Rwy 17L/17R, landing north indicates Rwy 35L/35R.
- NOTE: Turbojet aircraft descend via mach number until intercepting 280K.
- Maintain 280K until slowed by the STAR.

ARRIVAL ROUTE DESCRIPTION

STVEY TRANSITION (STVEY.SEWZY3)
WINDU TRANSITION (WINDU.SEWZY3)

From MSTLO on track 193° to cross SEWZY between 10000 and 16000, then on track 202° to cross VADRR at or above 8000.

LANDING RUNWAYS 17L/R: From VADRR on track 202° to cross JEDYE at 4000 and at 210K. Expect RNAV (RNP) approach or vectors to final approach course.

LANDING RUNWAYS 35L/R: From VADRR on track 194° to HHOOF, then on track 174° to MMARE at or above 6000 and at 220K, then on track 173° to cross SMRFF at 5000 and at 210K, then on track 173° to WRRDD, then on track 173°. Expect RNAV (RNP) approach or vectors to final approach course.

NOTE: Chart not to scale.