

WAAS CH 90229 W35A	APP CRS 353°	Rwy Idg 12250 TDZE 496 Apt Elev 542
----------------------------------------	------------------------	----------------------------------------------------------------

RNAV (GPS) Y RWY 35L

AUSTIN-BERGSTROM INTL (AUS)

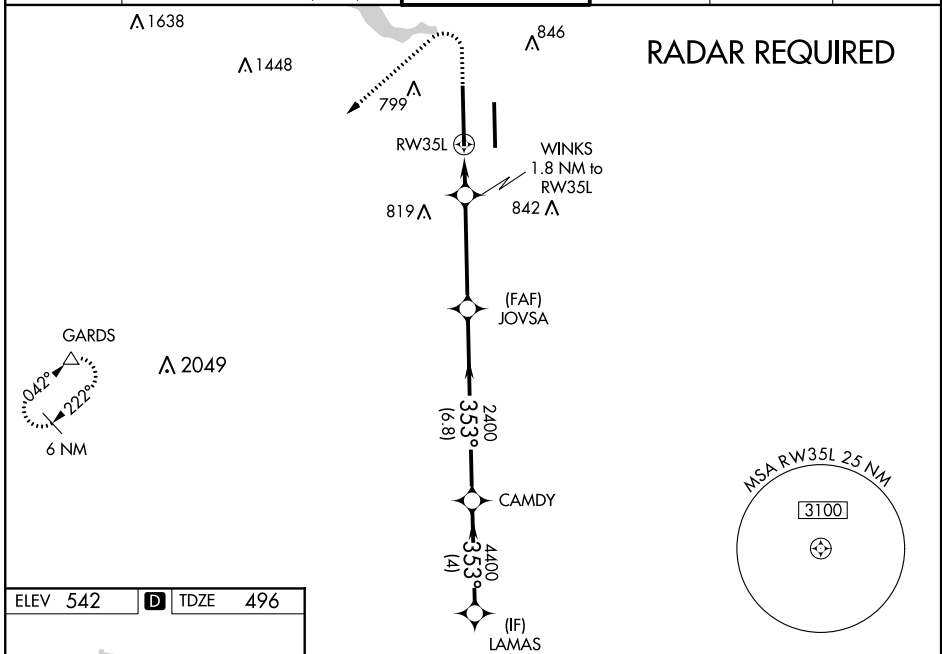
▼ For uncompensated Baro-VNAV systems, LNAV/VNAV NA below -8°C (18°F) or above 54°C (130°F). Simultaneous approach authorized with Rwy 35R. DME/DME RNP-0.3 NA.
▲ LNAV procedure NA during simultaneous operations. Use of FD or AP providing RNAV track guidance required during simultaneous operations. For inop MALSR increase LPV Cat E visibility to RVR 4000, LNAV/VNAV and LNAV Cat E visibility to 1/4 mile.

MALSR

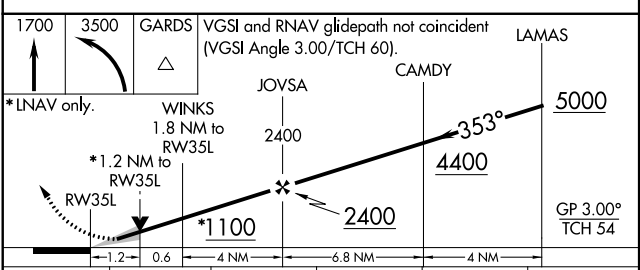
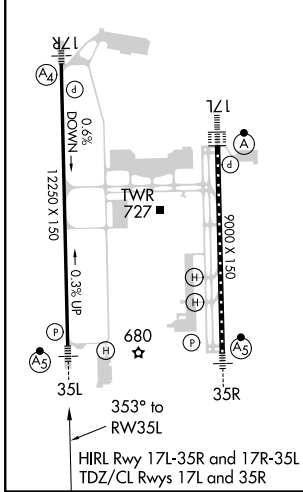


MISSED APPROACH:
Climb to 1700 then climbing left turn to 3500 direct GARDS and hold.

D-ATIS 124.4	AUSTIN APP CON 127.225 317.65 (EAST) 120.875 270.25 (SOUTH) 119.0 370.85 (WEST)	AUSTIN TOWER 121.0 281.5	GND CON 121.9 348.6	CLNC DEL 125.5 263.0	CPDLC
------------------------	---------------------------------------------------------------------------------------------------------------	------------------------------------	-------------------------------	--------------------------------	-------



ELEV 542	D	TDZE 496
-----------------	----------	-----------------



CATEGORY	A	B	C	D	E
LPV DA		696/24	200 (200-1/2)		
LNAV/VNAV DA		850/40	354 (400-3/4)		
LNAV MDA	920/24	424 (400-1/2)	920/40	424 (400-3/4)	
CIRCLING	1040-1 498 (500-1)	1100-1 558 (600-1)	1200-1 3/4 658 (700-1 3/4)	1200-2 658 (700-2)	1520-3 978 (1000-3)