

WAAS CH <b>62829</b> <b>W17A</b>	APP CRS <b>173°</b>	Rwy Idg TDZE Apt Elev	<b>9000</b> <b>492</b> <b>542</b>
--	------------------------	-----------------------------	---

# RNAV (GPS) Y RWY 17L

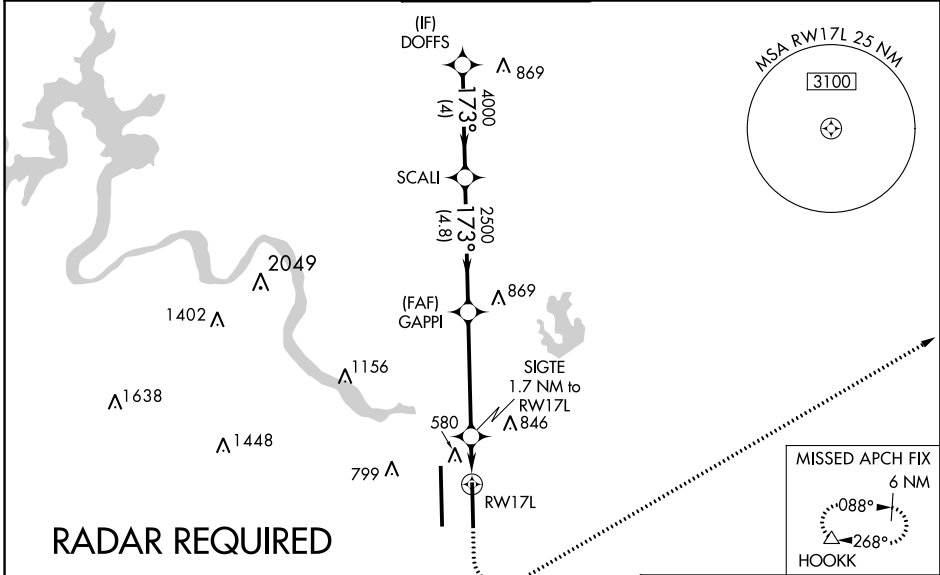
AUSTIN-BERGSTROM INTL (AUS)

**⚠** For uncompensated Baro-VNAV systems, LNAV/VNAV NA below -8°C (18°F) or above 54°C (130°F). DME/DME RNP -0.3 NA. LNAV procedure NA during simultaneous operations. Simultaneous approach authorized with Rwy 17R. Use of FD or AP providing RNAV track guidance required during simultaneous operations. For inop ALSF-2, increase LPV Cat E visibility to RVR 4000, increase LNAV/VNAV Cat E visibility to 1½ mile and increase LNAV Cat E visibility to RVR 6000.

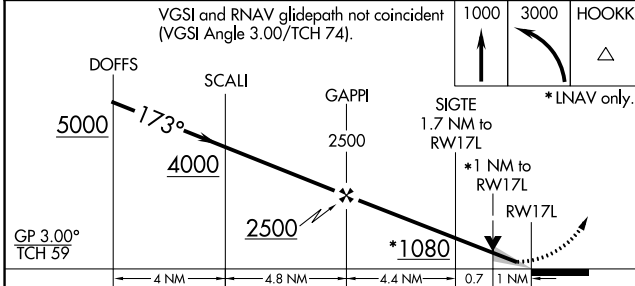
**ALSF-2**  
**ⓐ**

**MISSED APPROACH:**  
Climb to 1000 then climbing left turn to 3000 direct HOOKK and hold.

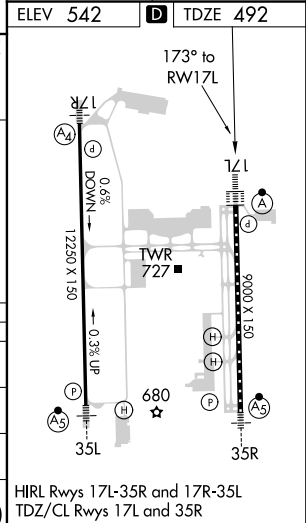
ATIS-D <b>124.4</b>	AUSTIN APP CON <b>127.225 317.65 (EAST)</b> <b>120.875 270.25 (SOUTH)</b> <b>119.0 370.85 (WEST)</b>	AUSTIN TOWER <b>121.0 281.5</b>	GND CON <b>121.9 348.6</b>	CLNC DEL <b>125.5 263.0</b>	CPDLC
------------------------	---	------------------------------------	-------------------------------	--------------------------------	-------



ELEV 542	<b>D</b> TDZE 492
----------	-------------------



CATEGORY	A	B	C	D	E
LPV DA		692/24	200 (200-½)		
LNAV/VNAV DA		906/45	414 (400-¾)		
LNAV MDA	880/24	388 (400-½)	880/35	388 (400-¾)	
<b>C</b> CIRCLING	1040-1 498 (500-1)	1100-1 558 (600-1)	1200-1¾ 658 (700-1¾)	1200-2 658 (700-2)	1520-3 978 (1000-3)



SC-3, 09 NOV 2017 to 07 DEC 2017

SC-3, 09 NOV 2017 to 07 DEC 2017