

LOC/DME I-VNK <b>110.5</b> Chan 42	APP CRS <b>175°</b>	Rwy Idg TDZE Apt Elev	<b>9000</b> <b>492</b> <b>542</b>
--	------------------------	-----------------------------	---

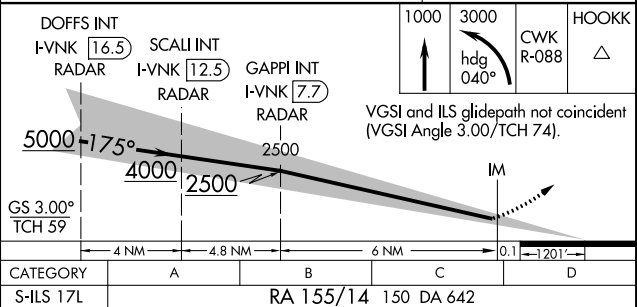
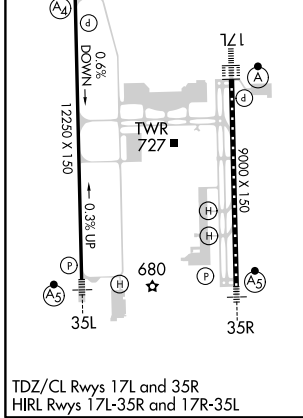
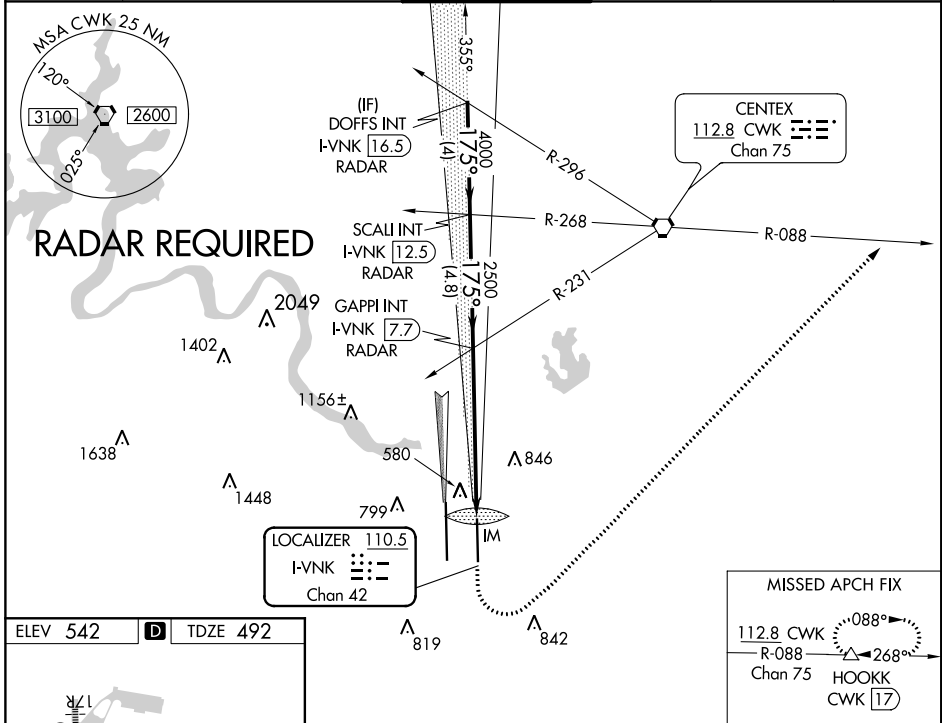
**ILS RWY 17L (SA CAT I)**  
AUSTIN-BERGSTROM INTL (AUS)

**⚠** Simultaneous approach authorized with Rwy 17R. DME Required. Requires specific OPSPEC, MSPEC or LOA approval and use of HUD to DH.

ALSF-2  
**(A)**

MISSED APPROACH: Climb to 1000, then climbing left turn to 3000 heading 040° and CWK VORTAC R-088 to HOOKK/CWK 17 DME and hold.

D-ATIS <b>124.4</b>	AUSTIN APP CON <b>127.225 317.65</b> (EAST) <b>120.875 270.25</b> (SOUTH) <b>119.0 370.85</b> (WEST)	AUSTIN TOWER <b>121.0 281.5</b>	GND CON <b>121.9 348.6</b>	CLNC DEL <b>125.5 263.0</b>	CPDLC
------------------------	---	------------------------------------	-------------------------------	--------------------------------	-------



**SA CATEGORY I - SPECIAL AIRCREW & AIRCRAFT CERTIFICATION REQUIRED**

SC-3, 09 NOV 2017 to 07 DEC 2017

SC-3, 09 NOV 2017 to 07 DEC 2017