

(ELOEL1 .ELOEL) 17117

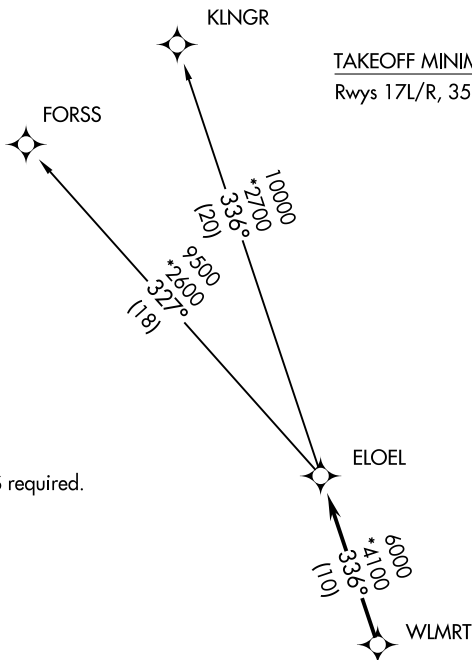
ELOEL ONE DEPARTURE (RNAV)

SL-556 (FAA)

AUSTIN-BERGSTROM INTL (AUS)

AUSTIN, TEXAS

D-ATIS
 124.4
 CLNC DEL
 125.5 263.0
 CPDLC
 GND CON
 121.9 348.6
 AUSTIN TOWER
 121.0 281.5
 AUSTIN DEP CON
 119.0 370.85



TAKEOFF MINIMUMS:

Rwys 17L/R, 35L/R: Standard.

NOTE: RADAR required.
 NOTE: DME/DME/IRU or GPS required.
 NOTE: RNAV-1

TAKEOFF OBSTACLES:

Rwy 17L: Trees beginning 498' from DER, 576' left of centerline, up to 80' AGL/517' MSL. Tree 617' from DER, 585' right of centerline, 55' AGL/498' MSL.
 Rwy 17R: Tree 1007' from DER, 739' right of centerline, 61' AGL/523' MSL.
 Rwy 35R: Tree 817' from DER, 664' right of centerline, 55' AGL/528' MSL.

NOTE: Chart not to scale.



DEPARTURE ROUTE DESCRIPTION

TAKEOFF RUNWAYS 17L/R: Climb on assigned heading for radar vectors to WLMRT, then on depicted route to ELOEL, thence

TAKEOFF RUNWAY 35L/R: Climb heading 353° to 1800, then as assigned by ATC for radar vectors to WLMRT, then on depicted route to ELOEL, thence

. . . . On (transition). Maintain 4000 or as assigned by ATC. Expect filed altitude 10 minutes after departure.

FORSS TRANSITION (ELOEL1 .FORSS):

KLNGR TRANSITION (ELOEL1 .KLNGR):

ELOEL ONE DEPARTURE (RNAV)

(ELOEL1 .ELOEL) 05MAR15

AUSTIN, TEXAS

AUSTIN-BERGSTROM INTL (AUS)

SC-3, 09 NOV 2017 to 07 DEC 2017

SC-3, 09 NOV 2017 to 07 DEC 2017