

VORTAC SPI <b>112.7</b> Chan <b>74</b>	APP CRS <b>055°</b>	Rwy Idg TDZE Apt Elev	<b>7927</b> <b>592</b> <b>598</b>
--	------------------------	-----------------------------	---

# VOR/DME RWY 4

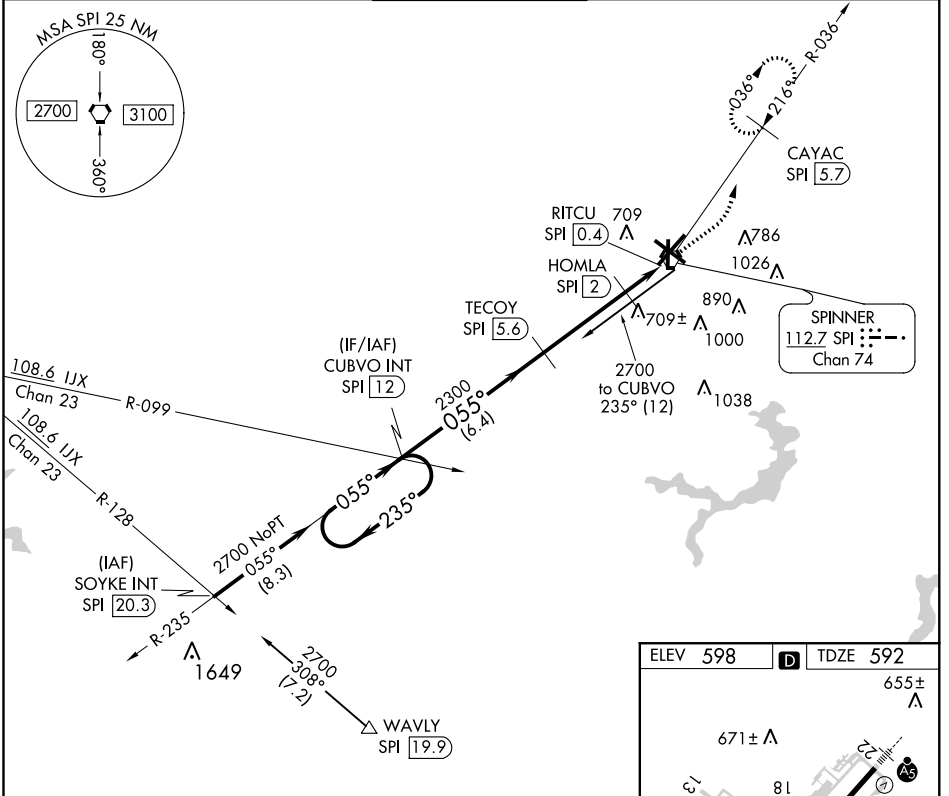
ABRAHAM LINCOLN CAPITAL (SPI)

**⚠** When local altimeter setting not received, use Lincoln altimeter setting and increase all MDA 60 feet, increase Circling Cat C/D visibility ¼ mile.  
**⚠** For inoperative MALSR, increase S-4 Cat D visibility to RVR 6000.  
**ASR** VDP NA when using Lincoln altimeter setting.



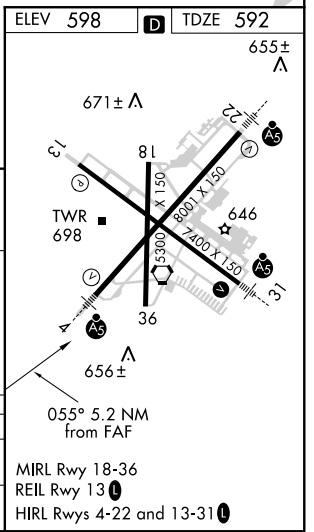
**MISSED APPROACH:** Climb to 1500 then climbing left turn to 2200 via SPI VORTAC R-036 to CAYAC/5.7 DME and hold.

ATIS <b>127.65 270.1</b>	SPRINGFIELD APP CON ★ <b>126.15 323.0</b>	SPRINGFIELD TOWER ★ <b>121.3 (CTAF) 257.8</b>	GND CON <b>121.9 348.6</b>	CLNC DEL <b>121.7</b>	UNICOM <b>122.95</b>
-----------------------------	--	--	-------------------------------	--------------------------	-------------------------



One Minute Holding Pattern

	CUBVO INT SPI [12]	TECOY SPI [5.6]	HOMLA SPI [2]	RITCU SPI [0.4]
2700	← 235°	→ 055°	→ 055°	→ 055°
	6.4 NM	3.6 NM	0.6	1 NM
1500	2200	CAYAC SPI [5.7]		
			3.00° TCH 56	SPI [1.4]
			1140	



EC-3, 09 NOV 2017 to 07 DEC 2017

EC-3, 09 NOV 2017 to 07 DEC 2017