

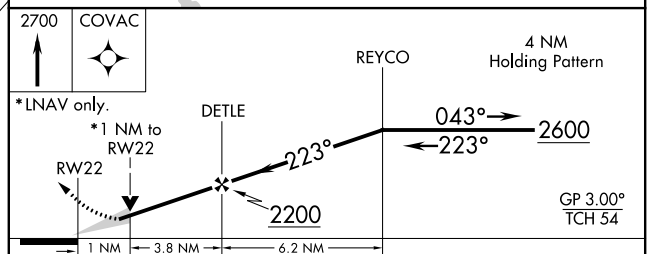
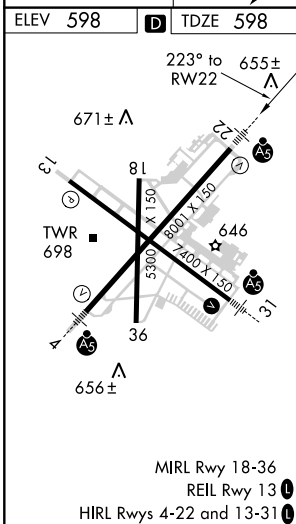
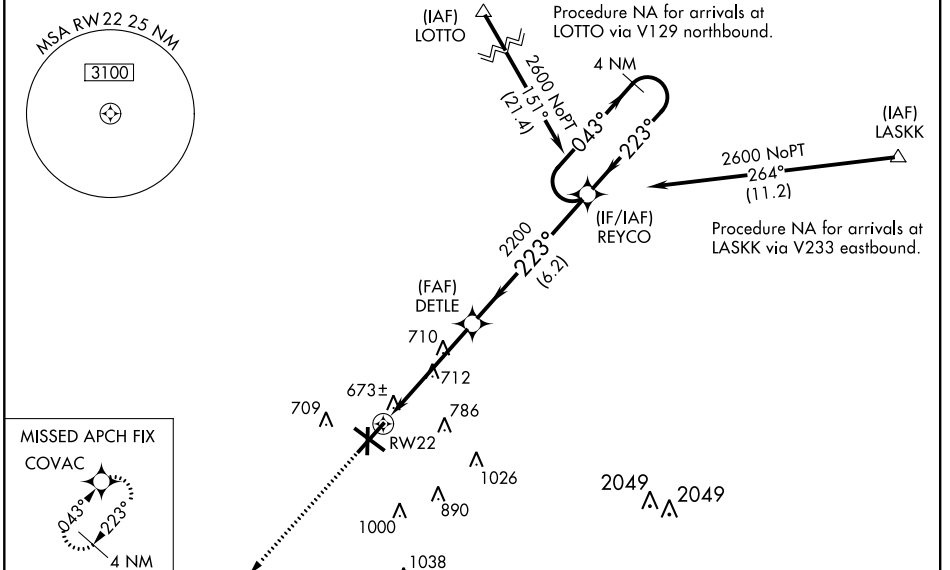
WAAS CH 81809 W22A	APP CRS 223°	Rwy Idg TDZE 598 Apt Elev 598	8001
--	------------------------	---	-------------

RNAV (GPS) RWY 22

ABRAHAM LINCOLN CAPITAL (SPI)

<p>DME/DME RNP-0.3 NA. For uncompensated Baro-VNAV systems LNAV/VNAV NA below -16°C (4°F) and above 47°C (116°F). When local altimeter setting not received, use Lincoln altimeter setting and increase all DA 57 feet, all MDA 60 feet, and increase LNAV/VNAV all Cats, LNAV Cats C/D and Circling Cat C visibility ¼ mile. Baro-VNAV and VDP NA when using Lincoln altimeter setting. For inoperative MALSR, increase LPV all Cats visibility to 1 mile. For inoperative MALSR when using Lincoln altimeter setting increase LPV all Cats visibility to 1 ½, LNAV/VNAV all Cats visibility to 1 ¾, LNAV Cats C/D visibility to 1 ¼.</p>	<p>MALSR</p>	<p>MISSED APPROACH: Climb to 2700 direct COVAC and hold.</p>
	<p>ASR</p>	

ATIS 127.65 270.1	SPRINGFIELD APP CON ★ 126.15 323.0	SPRINGFIELD TOWER ★ 121.3 (CTAF) 257.8	GND CON 121.9 348.6	CLNC DEL 121.7	UNICOM 122.95
-----------------------------	--	--	-------------------------------	--------------------------	-------------------------



CATEGORY	A	B	C	D
LPV DA		884-½	286 (300-½)	
LNAV/VNAV DA		1050-1	452 (500-1)	
LNAV MDA	960-½	382 (400-½)	960-⅝	382 (400-⅝)
CIRCLING	1160-1¼	562 (600-1¼)	1160-1½	1200-2 602 (700-2)

EC-3, 09 NOV 2017 to 07 DEC 2017

EC-3, 09 NOV 2017 to 07 DEC 2017