

LOC I-LQY <b>111.7</b>	APP CRS <b>223°</b>	Rwy Idg TDZE Apt Elev	<b>8001</b> <b>598</b> <b>598</b>
---------------------------	------------------------	-----------------------------	---

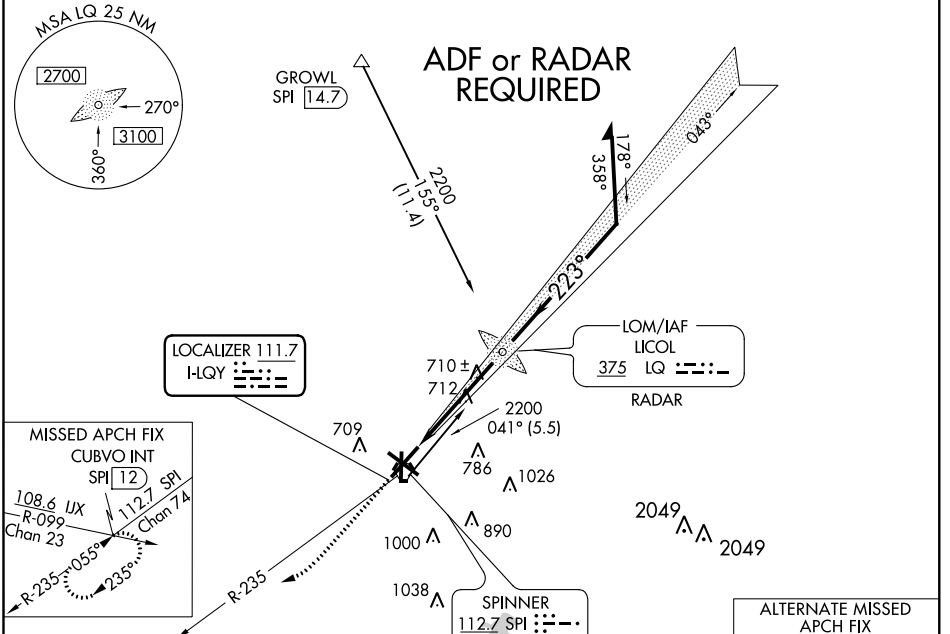
# ILS or LOC RWY 22

ABRAHAM LINCOLN CAPITAL (SPI)

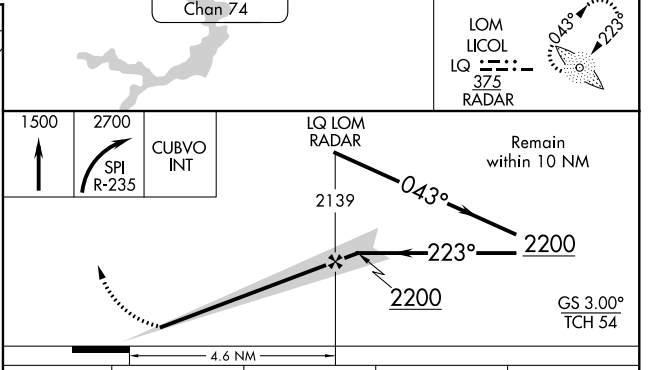
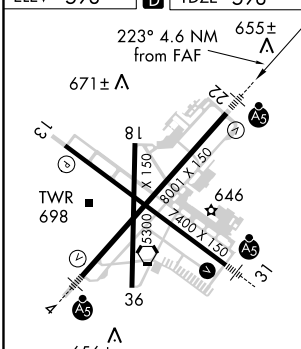
**ADF or RADAR Required.** When local altimeter setting not received, use Lincoln altimeter setting and increase call DA 57 feet, all MDA 60 feet, and increase S-LOC 22 Cat C/D and Circling Cat C visibility 1/4 mile.

**MALSR** MISSED APPROACH: Climb to 1500 then climbing right turn to 2700 via SPI VORTAC R-235 to CUBVO INT/SPI 12 DME and hold.

ATIS <b>127.65 270.1</b>	SPRINGFIELD APP CON * <b>126.15 323.0</b>	SPRINGFIELD TOWER * <b>121.3 (CTAF) 257.8</b>	GND CON <b>121.9 348.6</b>	CLNC DEL <b>121.7</b>	UNICOM <b>122.95</b>
-----------------------------	--	--	-------------------------------	--------------------------	-------------------------



ELEV 598	<b>D</b>	TDZE 598
----------	----------	----------



CATEGORY	A	B	C	D
S-ILS 22	798-1/2 200 (200-1/2)			
S-LOC 22	980-1/2 382 (400-1/2)	980-5/8 382 (400-5/8)		
CIRCLING	1160-1 562 (600-1)	1160-1 1/2 562 (600-1 1/2)	1200-2 602 (700-2)	

FAF to MAP 4.6 NM					
Knots	60	90	120	150	180
Min:Sec	4:36	3:04	2:18	1:50	1:32

EC-3, 09 NOV 2017 to 07 DEC 2017

EC-3, 09 NOV 2017 to 07 DEC 2017