

HI-VOR/DME or TACAN RWY 4

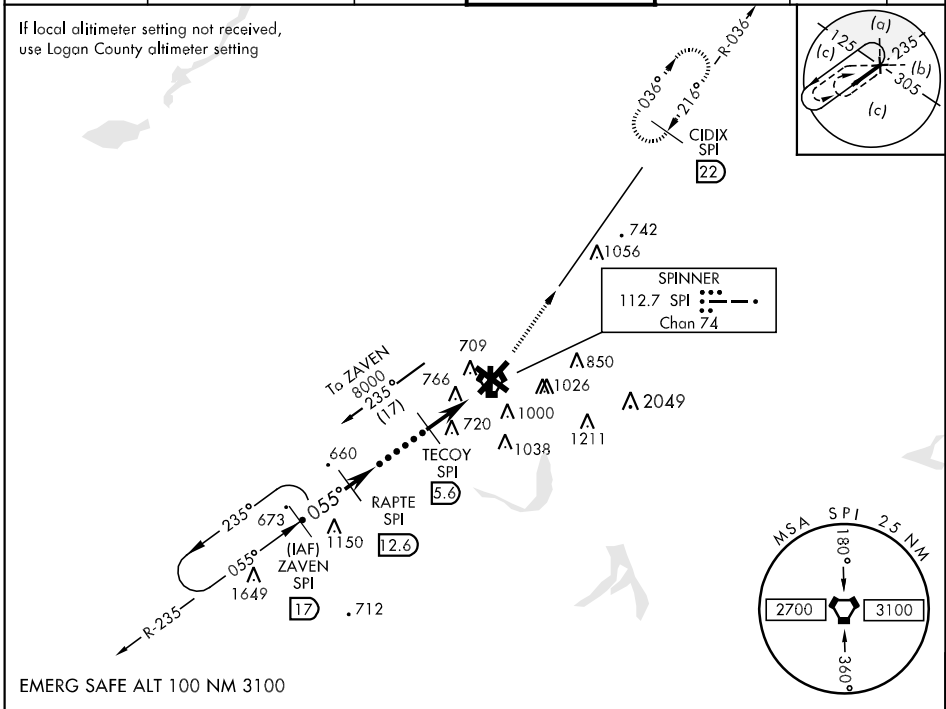
VORTAC SPI 112.7 Chan 74	APCH CRS 055°	Rwy Idg THRE 8001 588 Arpt Elev 598	JAL-518 [USAF]	SPRINGFIELD/ABRAHAM LINCOLN CAPITAL (KSPI)
--------------------------------	------------------	--	----------------	--

V * When ALS inop, increase vis to 1¼ miles.
 ** When ALS inop, increase vis to 1¾ miles.

A5 MALSR

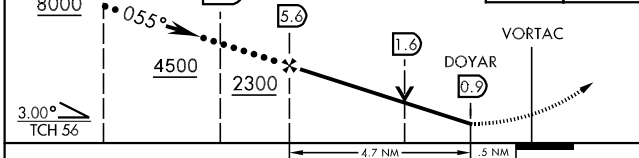
MISSED APPROACH: Climb to 8000 via SPI VORTAC R-036 to CIDIX/22 DME and hold. Continue climb-in-hold to 8000.

ATIS 127.65 270.1	SPRINGFIELD APP CON * 126.15 323.0	UNICOM 122.95	SPRINGFIELD TOWER * 121.3 (CTAF) 257.8	GND CON 121.9 348.6	CLNC DEL 121.7	ASR
----------------------	---------------------------------------	------------------	---	------------------------	-------------------	-----

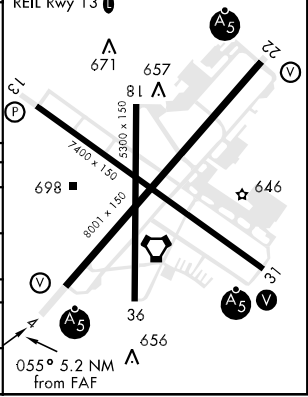


VDP NA when using Logan County altimeter setting.	8000 SPI R-036	CIDIX SPI 22	ELEV 598	THRE 588
---	-------------------	-----------------	----------	----------

HIRL Rwy 4-22, 13-31
MIRL Rwy 18-36
REIL Rwy 13



CATEGORY	C	D	E
S-4 *	1020/40	432 (500-¾)	
CIRCLING	1160-1½ 562 (600-1½)	1200-2 602 (700-2)	1380-2¾ 782 (800-2¾)
LOGAN COUNTY ALTIMETER			
S-4 **	1080/50	492 (500-1)	
CIRCLING	1220-1¾ 622 (700-1¾)	1260-2 662 (700-2)	1440-3 842 (900-3)



HI-VOR/DME or TACAN RWY 4

EC-3, 09 NOV 2017 to 07 DEC 2017

EC-3, 09 NOV 2017 to 07 DEC 2017