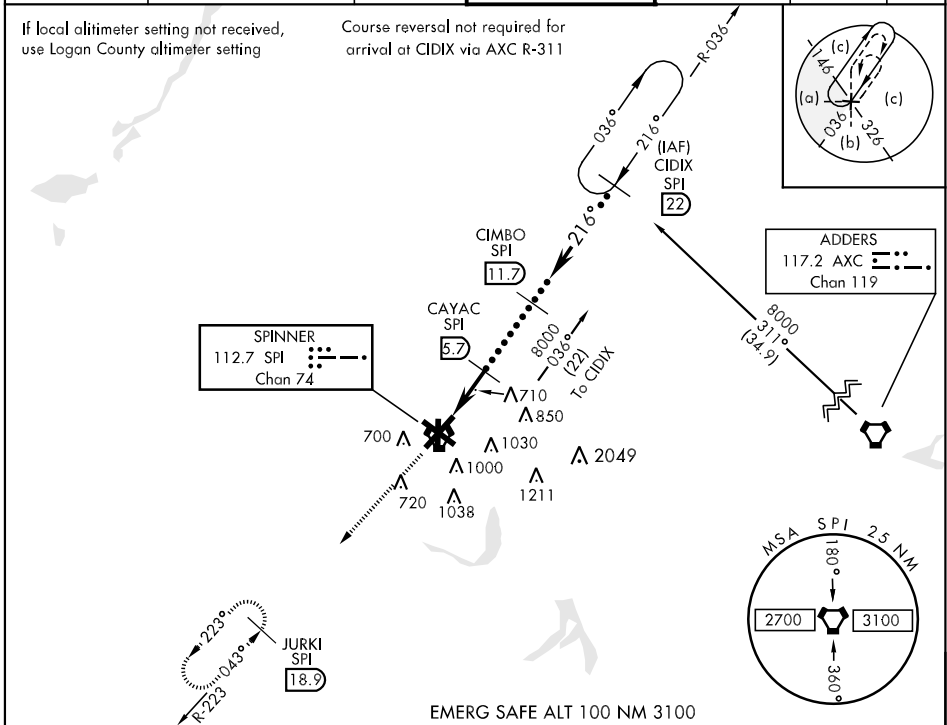


# HI-VOR/DME or TACAN RWY 22

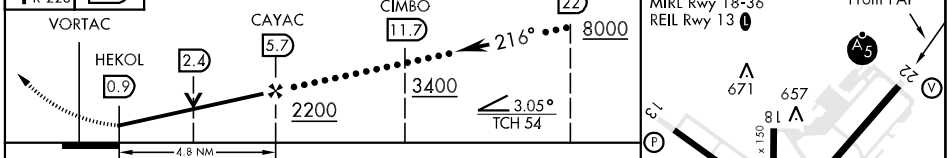
VORTAC SPI <b>112.7</b> Chan <b>74</b>	APCH CRS <b>216°</b>	Rwy Idg THRE <b>8001</b> 598 Arpt Elev <b>598</b>	JAL-518 [USAF]	SPRINGFIELD/ABRAHAM LINCOLN CAPITAL (KSPI)	
--	-------------------------	--	----------------	--	--

<p><b>V</b> * When ALS inop, increase vis to 1¼ miles. ** When ALS inop, increase vis to 1¾ miles.</p>	MALSR 	MISSED APPROACH: Climb to 8000 via SPI VORTAC R-223 to JURKI/18.9 DME and hold, continue climb-in-hold to 8000.
--	-----------	---

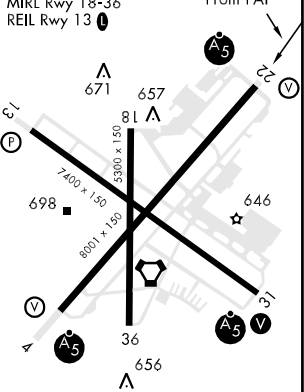
ATIS <b>127.65 270.1</b>	SPRINGFIELD APP CON * <b>126.15 323.0</b>	UNICOM <b>122.95</b>	SPRINGFIELD TOWER * <b>121.3 (CTAF) 257.8</b>	GND CON <b>121.9 348.6</b>	CLNC DEL <b>121.7</b>	ASR
-----------------------------	--	-------------------------	--	-------------------------------	--------------------------	-----



8000 SPI R-223	JURKI SPI 18.9	VDP NA when using Logan County altimeter setting.	CIDIX 22	ELEV 598	THRE 598
----------------	----------------	---	----------	----------	----------



CATEGORY	C		D		E
S-22 *	1100-1		502	(600-1)	
CIRCLING	1160-1½ 562 (600-1½)	1200-2 602 (700-2)	1380-2¾ 782 (800-2¾)		
LOGAN COUNTY ALTIMETER					
S-22 **	1160-1¼		562	(600-1¼)	
CIRCLING	1220-1¾ 622 (700-1¾)	1260-2 662 (700-2)	1440-3 842 (900-3)		



# HI-VOR/DME or TACAN RWY 22

EC-3, 09 NOV 2017 to 07 DEC 2017

EC-3, 09 NOV 2017 to 07 DEC 2017