

SPRINGFIELD, ILLINOIS

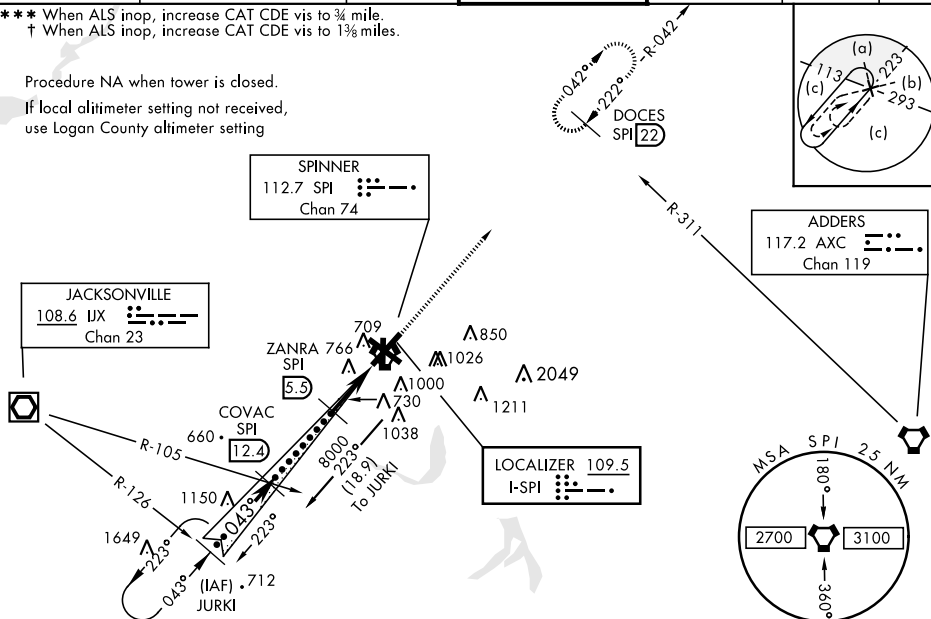
HI-ILS or LOC/DME RWY 4

| | | | | |
|--|-------------------------|---|----------------|--|
| LOC I-SPI 109.5 | APCH CRS 043° | Rwy Idg THRE Arpt Elev 8001 588 598 | JAL-518 [USAF] | SPRINGFIELD/ABRAHAM LINCOLN CAPITAL (KSPI) |
| ▼ * When ALS inop, increase CAT CDE RVR to 45, vis to ¼ mile. ** When ALS inop, increase CAT CDE RVR to 60, vis to 1 ½ miles. | | | MALSR | MISSED APPROACH: Climb to 1100 then climbing right turn to 8000 via hdg 050° and SPI VORTAC R-042 to DOCES INT/SPI VORTAC 22 DME and hold, continue in-hold-climb to 8000. |

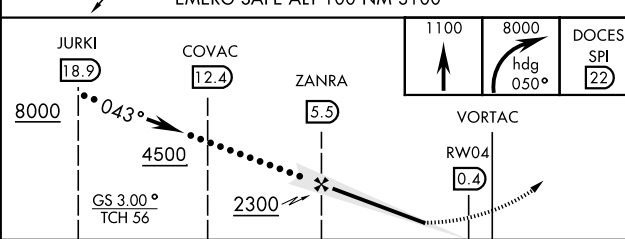
| | | | | | | |
|-----------------------------|--|-------------------------|--|-------------------------------|--------------------------|-----|
| ATIS 127.65 270.1 | SPRINGFIELD APP CON * 126.15 323.0 | UNICOM 122.95 | SPRINGFIELD TOWER * 121.3 (CTAF) 0 257.8 | GND CON 121.9 348.6 | CLNC DEL 121.7 | ASR |
|-----------------------------|--|-------------------------|--|-------------------------------|--------------------------|-----|

*** When ALS inop, increase CAT CDE vis to ¾ mile.
 † When ALS inop, increase CAT CDE vis to 1 ¾ miles.

Procedure NA when tower is closed.
 If local altimeter setting not received, use Logan County altimeter setting



EMERG SAFE ALT 100 NM 3100



| CATEGORY | C | D | E |
|------------------------|-------------------------|-----------------------|-------------------------|
| S-ILS 4 * | 788/24 | 200 | (200-½) |
| S-LOC 4 ** | 980/35 | 392 | (400-¾) |
| CIRCLING | 1160-1½ 562 (600-1½) | 1200-2 602 (700-2) | 1380-2¾ 782 (800-2¾) |
| LOGAN COUNTY ALTIMETER | | | |
| S-ILS 4 *** | 845/24 | 257 | (300-½) |
| S-LOC 4 † | 1040/45 | 452 | (500-¾) |
| CIRCLING | 1220-1¾ 622 (700-1¾) | 1260-2 662 (700-2) | 1440-3 842 (900-3) |

| | |
|---|----------|
| ELEV 598 | THRE 588 |
| HIRL Rwy 4-22, 13-31 MRL Rwy 18-36 REL Rwy 13 | |

| | | | | | |
|---------|------|------|------|------|------|
| Knots | 120 | 140 | 160 | 180 | 200 |
| Min:Sec | 2:33 | 2:11 | 1:55 | 1:42 | 1:32 |

SPRINGFIELD, ILLINOIS 39°51'N-89°41'W SPRINGFIELD/ABRAHAM LINCOLN CAPITAL (KSPI)

Amdt 14 18SEP14

HI-ILS or LOC/DME RWY 4

EC-3, 09 NOV 2017 to 07 DEC 2017

EC-3, 09 NOV 2017 to 07 DEC 2017