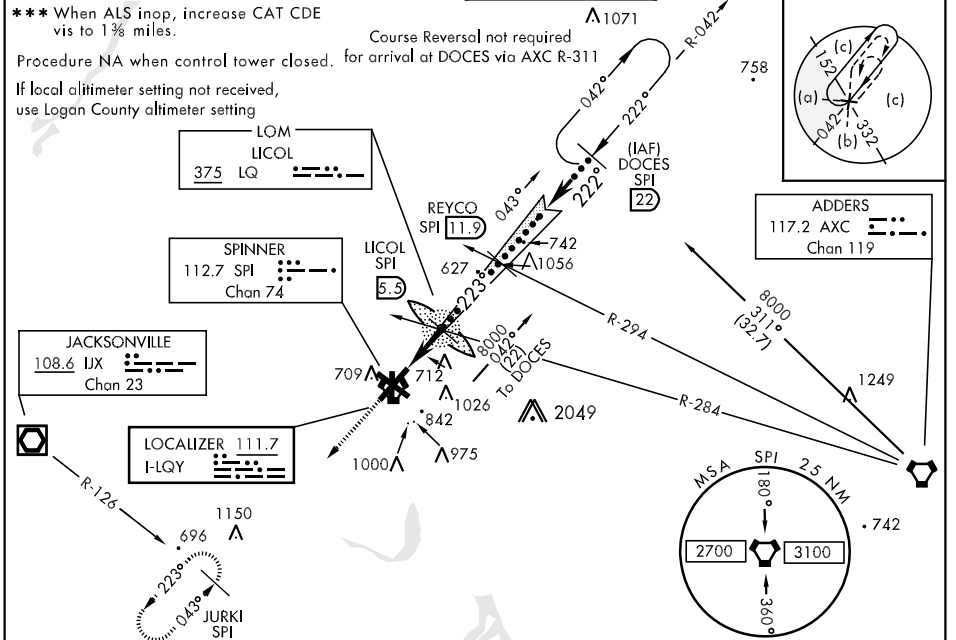


HI-ILS or LOC RWY 22

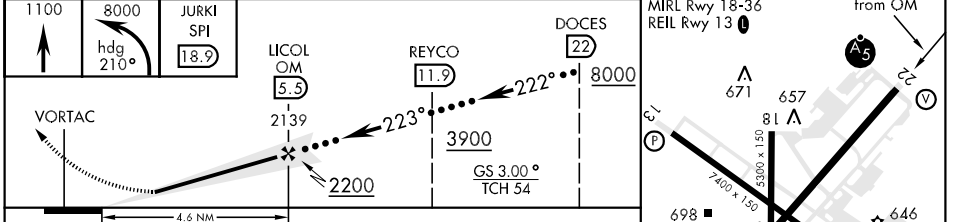
LOC I-LQY 111.7	APCH CRS 223°	Rwy Idg THRE Arpt Elev 8001 598 598	JAL-518 [USAF]	SPRINGFIELD/ABRAHAM LINCOLN CAPITAL (KSPI)
---------------------------	-------------------------	---	----------------	--

▼ *When ALS inop, increase CAT CDE vis to 3/4 mile.
******When ALS inop, increase CAT CDE vis to 1 1/2 miles.
MALSR MISSED APPROACH: Climb to 1100 then climbing left turn to 8000 via hdg 210° and SPI VORTAC R-223 to JURKI INT/ SPI 18.9 DME and hold, continue climb-in-hold to 8000.

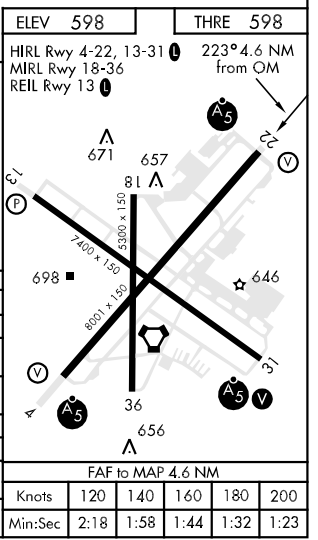
ATIS 127.65 270.1	SPRINGFIELD APP CON * 126.15 323.0	UNICOM 122.95	SPRINGFIELD TOWER * 121.3 (CTAF) 257.8	GND CON 121.9 348.6	CLNC DEL 121.7	ASR
-----------------------------	--	-------------------------	--	-------------------------------	--------------------------	-----



EMERG SAFE ALT 100 NM 3100



CATEGORY	C	D	E
S-ILS 22 *	798-1/2	200	(200-1/2)
S-LOC 22 **	980-5/8	382	(400-5/8)
CIRCLING	1160-1 1/2 562 (600-1 1/2)	1200-2 602 (700-2)	1380-2 3/4 782 (800-2 3/4)
LOGAN COUNTY ALTIMETER			
S-ILS 22 *	855-1/2	257	(300-1/2)
S-LOC 22 ***	1040-7/8	442	(500-7/8)
CIRCLING	1220-1 3/4 622 (700-1 3/4)	1260-2 662 (700-2)	1440-3 842 (900-3)



SPRINGFIELD, ILLINOIS 39°51'N-89°41'W SPRINGFIELD/ABRAHAM LINCOLN CAPITAL (KSPI)

Orig A 17NOV11

HI-ILS or LOC RWY 22

EC-3, 09 NOV 2017 to 07 DEC 2017

EC-3, 09 NOV 2017 to 07 DEC 2017