

WAAS CH <b>90300</b> <b>W05A</b>	APP CRS <b>054°</b>	Rwy Idg TDZE Apt Elev	<b>4301</b> <b>79</b> <b>80</b>
--	------------------------	-----------------------------	---------------------------------------

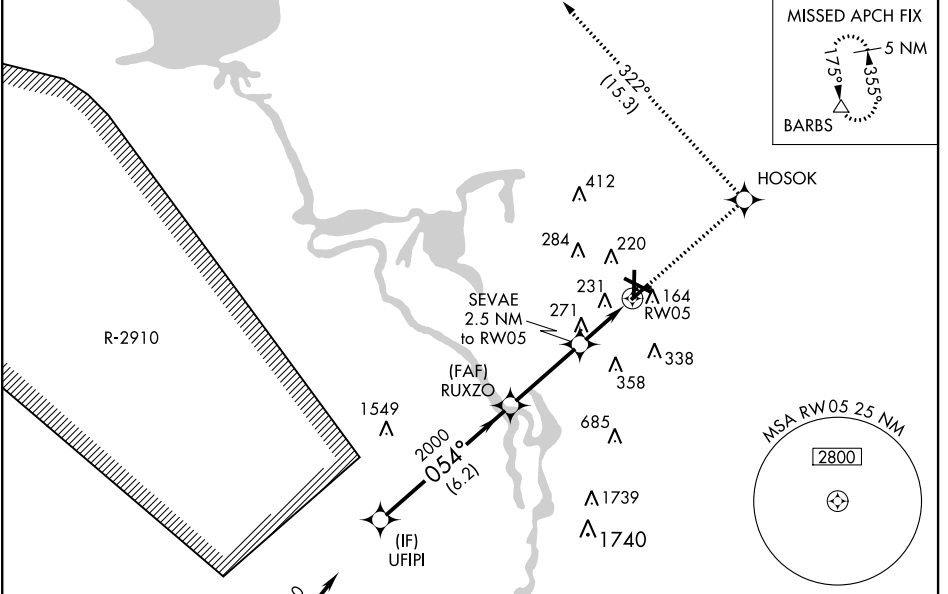
# RNAV (GPS) RWY 5

DELAND MUNI-SIDNEY H. TAYLOR FIELD (D/D)

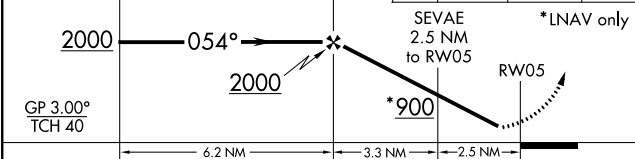
**ASR** Baro-VNAV NA below -15°C (5°F). DME/DME RNP-0.3 NA. Visibility reduction by helicopters NA. When local altimeter setting not received, use Daytona Beach Intl altimeter setting and increase all DAs 38 feet and all MDAs 40 feet; increase LPV all Cats, LNAV/VNAV all Cats, and LNAV Cat D visibility ¼ mile. Baro-VNAV NA when using Daytona Beach Intl altimeter setting. When VGSI inoperative, Straight-in/Circling Rwy 5 NA at night.

**MISSED APPROACH:** Climb to 3000 direct HOSOK and left turn via 322° track to BARBS and hold.

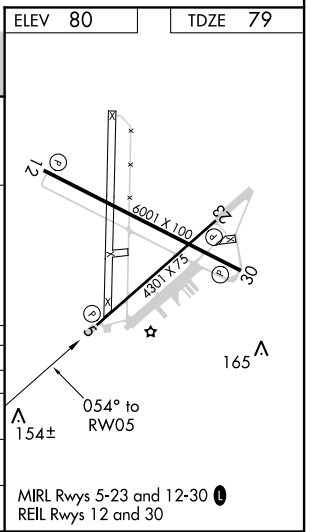
AWOS-3 <b>119,575</b>	DAYTONA APP CON <b>125.35 322.3</b>	UNICOM <b>123.075</b> (CTAF) <b>0</b>
--------------------------	--	--



Procedure Turn NA  
 VGSI and RNAV glidepath not coincident (VGSI Angle 3.00/TCH 52).  
 3000 HOSOK  
 BARBS  
 \*LNAV only  
 SEVAE 2.5 NM to RW05  
 RW05  
 \*900



CATEGORY	A	B	C	D
LPV DA	385-1		306 (400-1)	
LNAV/VNAV DA	577-1¾		498 (500-1¾)	
LNAV MDA	580-1	501 (500-1)	580-1½	501 (500-1½)
CIRCLING	580-1¼	500 (500-1¼)	580-1½	640-2 560 (600-2)



SE-3, 09 NOV 2017 to 07 DEC 2017

SE-3, 09 NOV 2017 to 07 DEC 2017