

WAAS CH <b>45700</b> <b>W23A</b>	APP CRS <b>234°</b>	Rwy Idg TDZE Apt Elev	<b>4301</b> <b>78</b> <b>80</b>
--	------------------------	-----------------------------	---------------------------------------

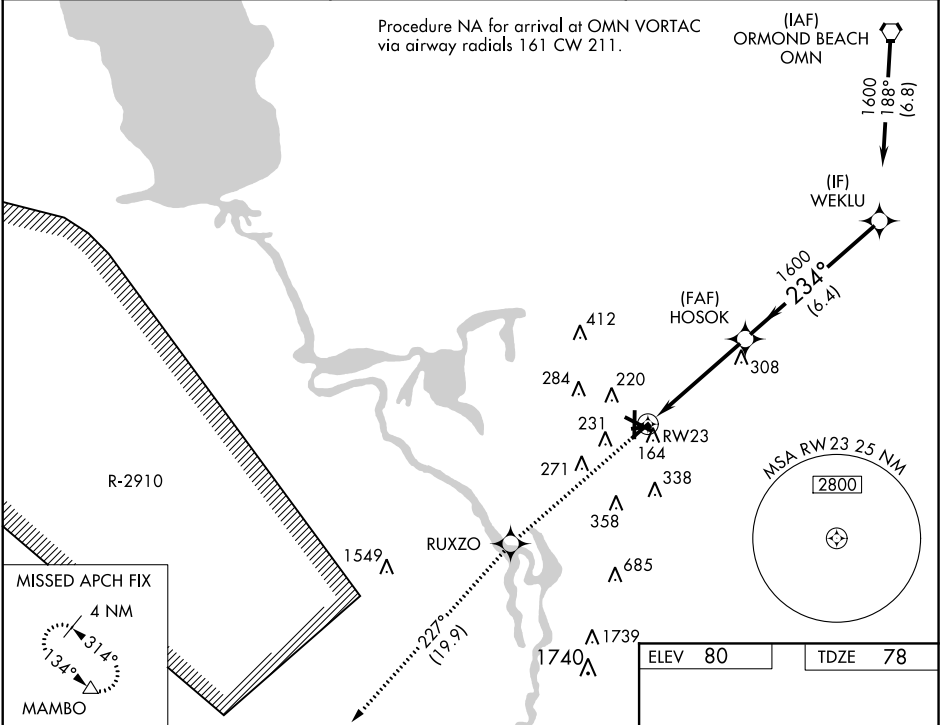
# RNAV (GPS) RWY 23

DELAND MUNI-SIDNEY H. TAYLOR FIELD (DED)

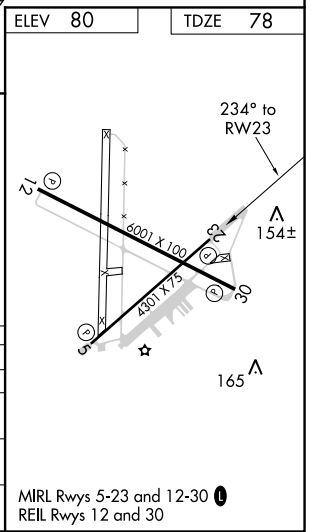
**ASR** Baro-VNAV NA below -15° C (5° F). DME/DME RNP-0.3 NA. If local altimeter setting not received, use Daytona Beach Intl altimeter setting and increase all DAs 38 feet and all MDAs 40 feet. Baro-VNAV NA when using Daytona Beach Intl altimeter setting.

**MISSED APPROACH:** Climb to 3000 direct RUXZO and via 227° track to MAMBO and hold.

AWOS-3 <b>119.575</b>	DAYTONA APP CON <b>125.35 322.3</b>	UNICOM <b>123.075</b> (CTAF) <b>0</b>
--------------------------	--	--



3000	RUXZO	fr 227°	MAMBO	VGSI and RNAV glidepath not coincident (VGSI Angle 3.00/TCH 67).	Procedure Turn NA
RW23		HOSOK		WEKLU	
1600		234°		1600	
4.6 NM		6.4 NM		GP 3.00° TCH 40	
CATEGORY	A	B	C	D	
LPV DA	374-1		296 (300-1)		
LNAV/VNAV DA	414-1¼		336 (400-1¼)		
LNAV MDA	420-1		342 (400-1)		420-1¼ 342 (400-1¼)
CIRCLING	520-1¼ 440 (500-1¼)	540-1¼ 460 (500-1¼)	540-1½ 460 (500-1½)	640-2 560 (600-2)	



SE-3, 09 NOV 2017 to 07 DEC 2017

SE-3, 09 NOV 2017 to 07 DEC 2017