

WAAS CH <b>50300</b> <b>W12A</b>	APP CRS <b>122°</b>	Rwy Idg TDZE Apt Elev	<b>6001</b> <b>74</b> <b>80</b>
----------------------------------------	------------------------	-----------------------------	---------------------------------------

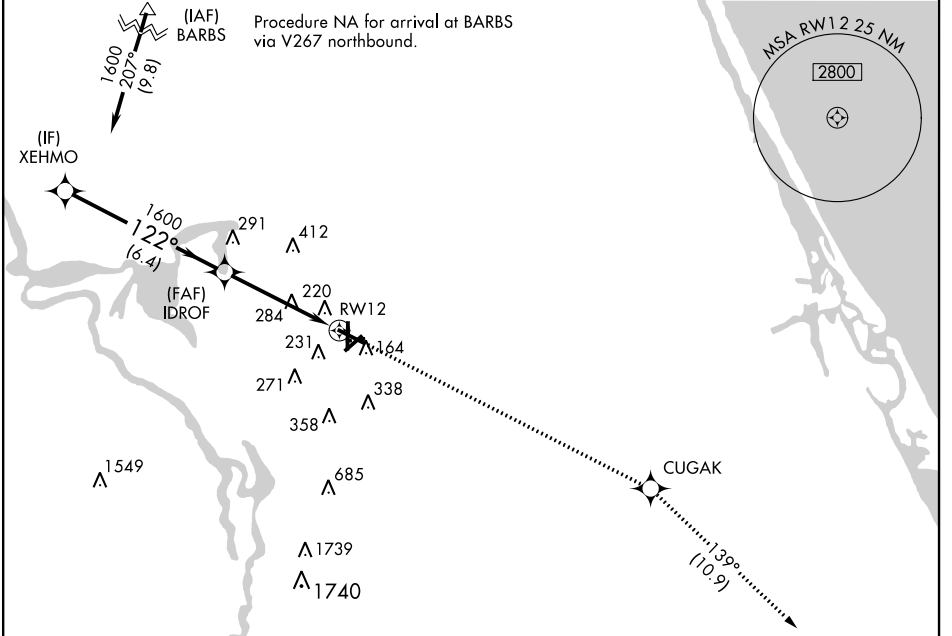
# RNAV (GPS) RWY 12

DELAND MUNI-SIDNEY H. TAYLOR FIELD (D/D)

**ASR** Baro-VNAV NA below -15° C (5° F). DME/DME RNP-0.3 NA. If local altimeter setting not received, use Daytona Beach Intl altimeter setting and increase all DAs 38 feet and all MDAs 40 feet. Baro-VNAV NA when using Daytona Beach Intl altimeter setting.

**MISSED APPROACH:** Climb to 2000 direct CUGAK and via 139° track to OAKIE and hold.

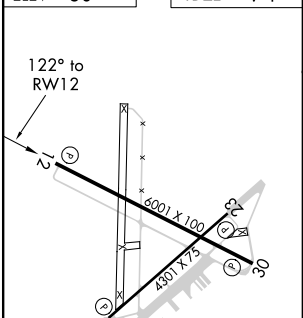
AWOS-3 <b>119.575</b>	DAYTONA APP CON <b>125.35 322.3</b>	UNICOM <b>123.075 (CTAF)</b> <b>0</b>
--------------------------	----------------------------------------	------------------------------------------



SE-3, 09 NOV 2017 to 07 DEC 2017

SE-3, 09 NOV 2017 to 07 DEC 2017

ELEV 80	TDZE 74
---------	---------



Procedure Turn NA	VGSi and RNAV glidepath not coincident (VGSi Angle 3.00/ TCH 51).			2000	CUGAK	tr 139°	OAKIE
XEHMO	IDROF						
1600	122°	1600					
GP 3.00° TCH 40							
	6.4 NM	4.6 NM					
CATEGORY	A	B	C	D			
LPV DA		404-1¼	330 (400-1¼)				
LNAV/VNAV DA		528-1½	454 (500-1½)				
LNAV MDA	540-1	466 (500-1)	540-1¼ 466 (500-1¼)	540-1½ 466 (500-1½)			
CIRCLING		540-1½	460 (500-1½)		640-2	560 (600-2)	

MIRL Rwy 5-23 and 12-30 **0**  
REIL Rwy 12 and 30