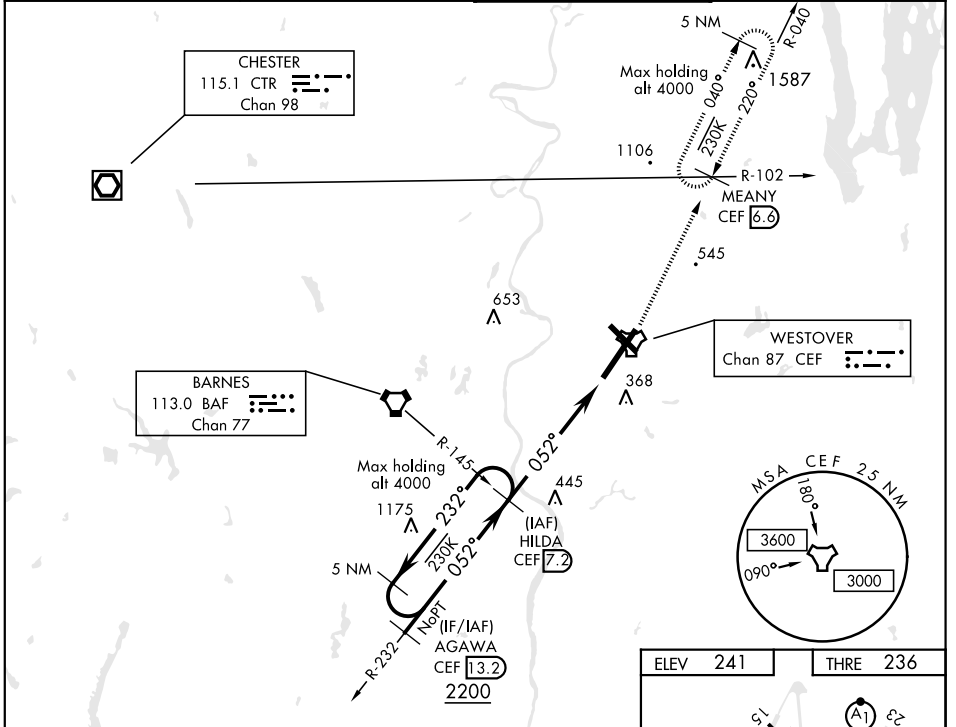


TACAN RWY 5

TACAN CEF Chan 87	APCH CRS 052°	Rwy ldg 10,396 THRE 236 Arpt Elev 241	AL-447 [USAF]	WESTOVER ARB METROPOLITAN (KCEF)
▼ ** When ALS inop increase CAT AB RVR to 55 and vis to 1 mile, CAT CDE vis to 1¼ miles. ** Circling not authorized all CAT act from RWY 23 clockwise to RWY 33.			ALSF-1 	MISSED APPROACH: Climb to 2700 via CEF R-040 to MEANY and hold, expect radar vectors.

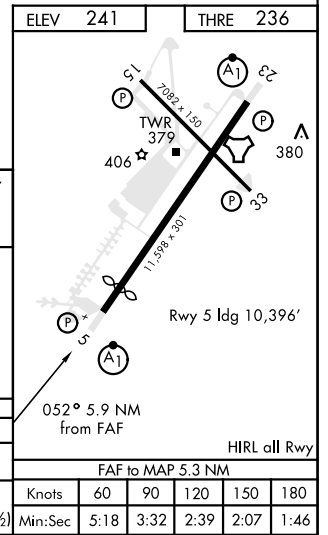
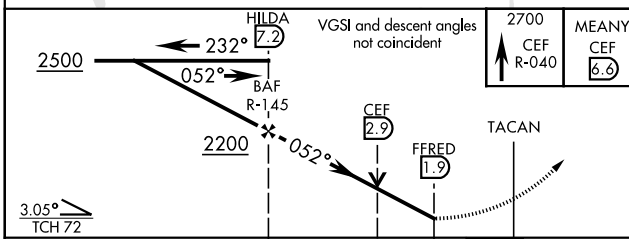
ATIS ★ 127.525	BRADLEY APP CON 125.35 281.5	WESTOVER TOWER ★ 134.85 (CTAF) 348.75	GND CON 118.35 275.8
--------------------------	--	---	--------------------------------



NE-1, 09 NOV 2017 to 07 DEC 2017

NE-1, 09 NOV 2017 to 07 DEC 2017

RADAR REQUIRED
EMERG SAFE ALT 100 NM 6400



ELEV	241	THRE	236			
CATEGORY	A	B	C	D	E	
S-5 *	820/40 584 (600-¾)		820-1¼ 584 (600-1¼)			
** CIRCLING	820-1 579 (600-1)		820-1¾ 579 (600-1¾)	960-2¼ 719 (800-2¼)	980-2½ 739 (800-2½)	
FAF to MAP 5.3 NM						
	Knots	60	90	120	150	180
	Min:Sec	5:18	3:32	2:39	2:07	1:46

TACAN RWY 5