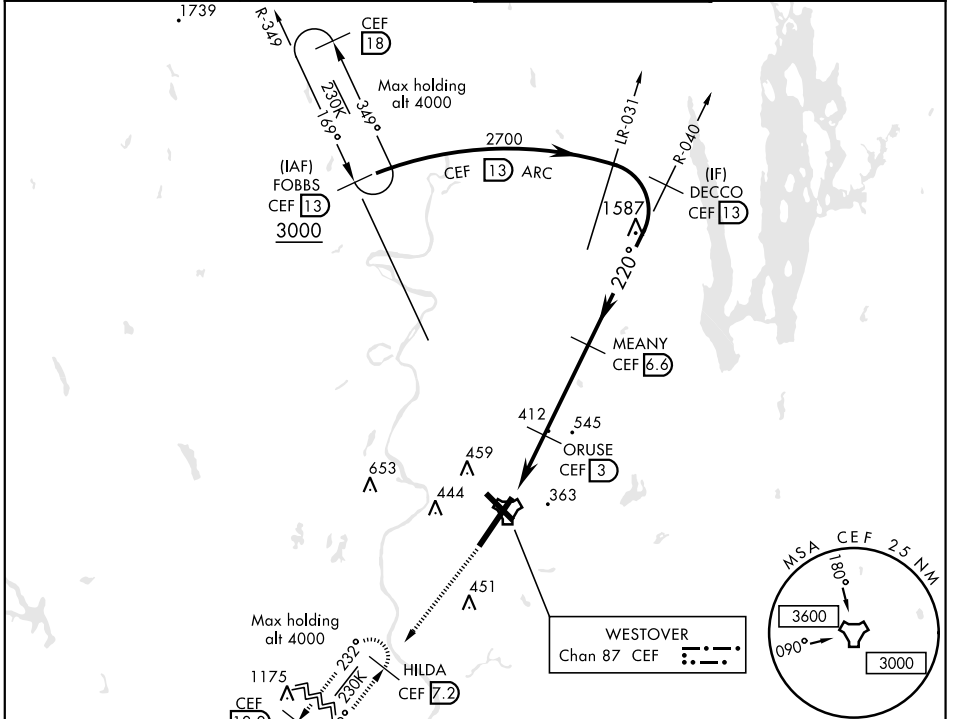


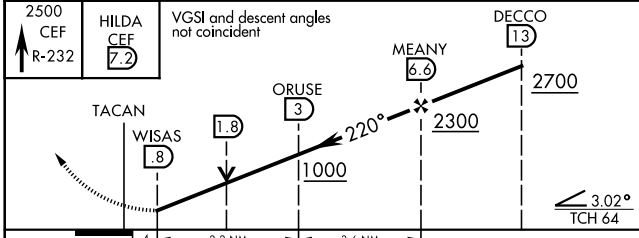
TACAN RWY 23

TACAN CEF Chan 87	APCH CRS 220°	Rwy ldg 11,598 TDZE 241 Arpt Elev 241	AL-447 [USAF]	WESTOVER ARB METROPOLITAN (KCEF)
▼ * When ALS inop, increase CAT AB RVR to 55 and vis to 1 mile, CAT CDE vis to 1½. ** Circling not authorized all CAT acft from RWY 23 clockwise to RWY 33.			ALSF-1 	MISSED APPROACH: Climb to 2500 via CEF R-232 to HILDA and hold, expect radar vectors.

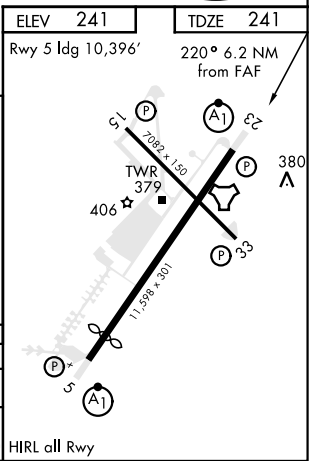
ATIS ★ 127.525	BRADLEY APP CON 125.35 281.5	WESTOVER TOWER ★ 134.85 (CTAF) 348.75	GND CON 118.35 275.8
--------------------------	--	---	--------------------------------



RADAR REQUIRED
EMERG SAFE ALT 100 NM 6400



	.4		2.2 NM		3.6 NM		
CATEGORY	A	B	C	D	E		
S-23*	760/24	519 (600-½)	760/55	519 (600-1)			
CIRCLING**	780-1 539 (600-1)	800-1 559 (600-1)	820-1½ 579 (600-1½)	960-2¼ 719 (800-2¼)	980-2½ 739 (800-2½)		HIRL all Rwy



TACAN RWY 23

NE-1, 09 NOV 2017 to 07 DEC 2017

NE-1, 09 NOV 2017 to 07 DEC 2017