

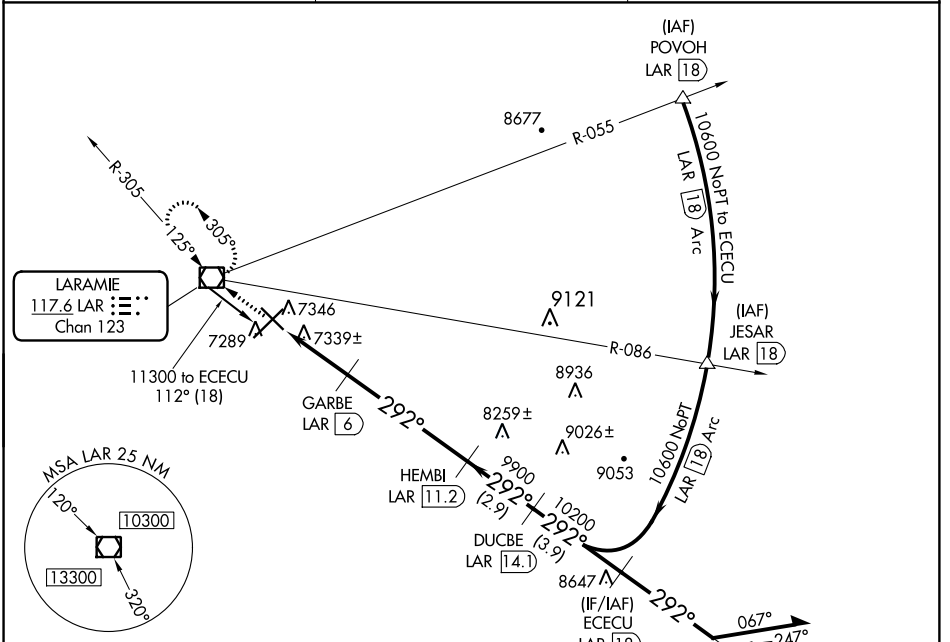
VOR/DME LAR 117.6 Chan 123	APP CRS 292°	Rwy Idg TDZE Apt Elev 6300 7278 7284
---	------------------------	--

VOR/DME RWY 30

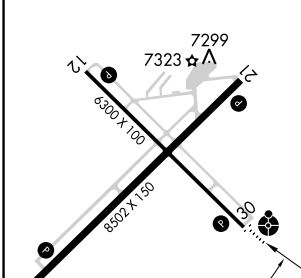
LARAMIE RGNL (LAR)

-35°C	ODALS 	MISSED APPROACH: Climb to 9600 direct LAR VOR/DME and hold, continue climb-in-hold to 9600.
-------	-----------	---

ASOS 135.475	DENVER CENTER 125.9 284.7	UNICOM 123.05 (CTAF)
------------------------	-------------------------------------	--------------------------------



ELEV 7284	D	TDZE 7278
-----------	----------	-----------



9600	LAR	ECECU LAR (18)	Remain within 10 NM
8220	GARBE LAR (6)	HEMBI LAR (11.2)	DUCBE LAR (14.1)
9900	LAR (3.1)	LAR (4)	LAR (3.1)
10200	10600	10600	10600
0.9	2 NM	5.2 NM	2.9 NM
3.9 NM			

CATEGORY	A	B	C	D
S-30	7600-¾	322 (400-¾)		7600-1 322 (400-1)
CIRCLING	7660-1 376 (400-1)	7740-1 456 (500-1)	7740-1½ 456 (500-1½)	7840-2 556 (600-2)

NW-1, 09 NOV 2017 to 07 DEC 2017

NW-1, 09 NOV 2017 to 07 DEC 2017