

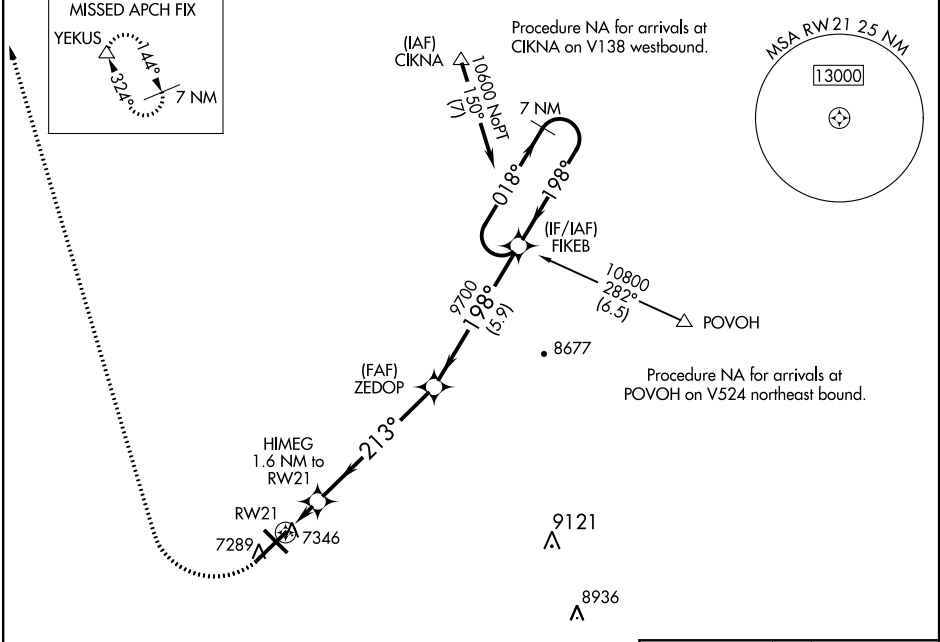
# RNAV (GPS) RWY 21

LARAMIE RGNL (L.A.R.)

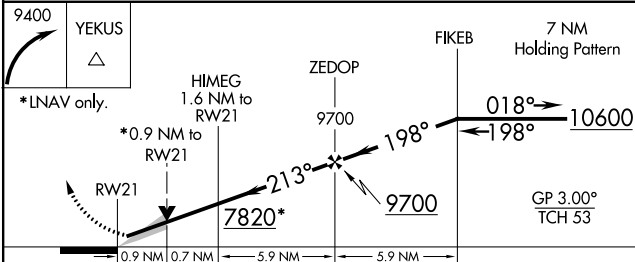
WAAS CH <b>72825</b> <b>W21A</b>	APP CRS <b>213°</b>	Rwy Idg TDZE Apt Elev	<b>8502</b> <b>7277</b> <b>7284</b>
--	------------------------	-----------------------------	---

<p>-35°C</p>	<p>Circling to Rwy 30 NA at night. Baro-VNAV NA. DME/DME RNP-0.3 NA.</p>	<p>MISSED APPROACH: Climbing right turn to 9400 direct YEKUS and hold.</p>
--------------	--	--

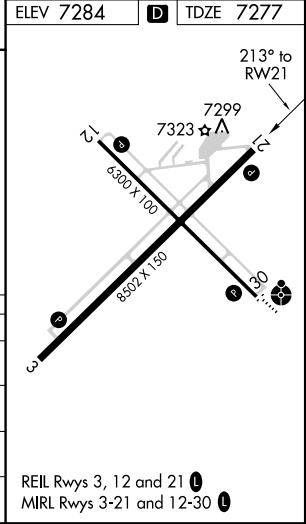
ASOS <b>135.475</b>	DENVER CENTER <b>125.9 284.7</b>	UNICOM <b>123.05</b> (CTAF)
------------------------	-------------------------------------	--------------------------------



ELEV 7284		TDZE 7277
-----------	--	-----------



CATEGORY	A	B	C	D
LPV DA		7527- <sup>3</sup> / <sub>4</sub>	250 (300- <sup>3</sup> / <sub>4</sub> )	
LNAV/VNAV DA		7527- <sup>3</sup> / <sub>4</sub>	250 (300- <sup>3</sup> / <sub>4</sub> )	
LNAV MDA		7600-1	323 (400-1)	
CIRCLING	7660-1 376 (400-1)	7740-1 456 (500-1)	7740-1½ 456 (500-1½)	7840-2 556 (500-2)



NW-1, 09 NOV 2017 to 07 DEC 2017

NW-1, 09 NOV 2017 to 07 DEC 2017