

WAAS CH <b>70600</b> <b>W12A</b>	APP CRS <b>122°</b>	Rwy Idg TDZE Apt Elev	<b>6300</b> <b>7275</b> <b>7284</b>
--	------------------------	-----------------------------	---

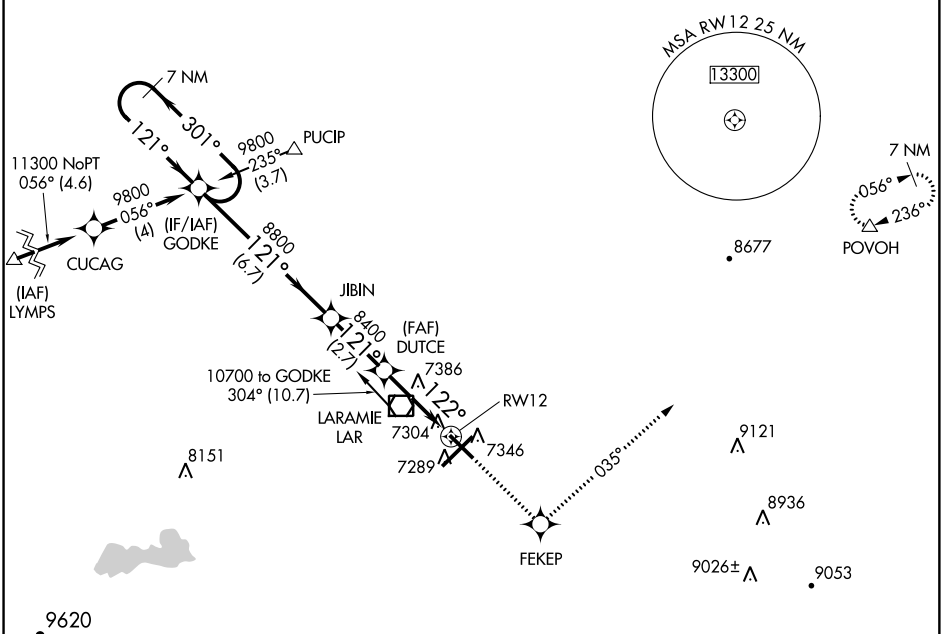
# RNAV (GPS) RWY 12

LARAMIE RGNL (L.A.R.)

**▽** DME/DME RNP-0.3 NA.  
**⊠** -35°C For uncompensated Baro-VNAV systems, LNAV/VNAV NA below -29°C (-20°F) or above 34°C (93°F).

**MISSED APPROACH:** Climb to 10700 direct FEKEP and via 035° track to POVOH and hold.

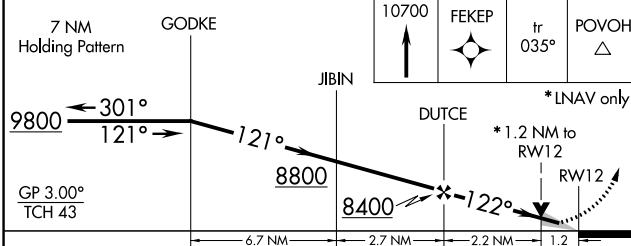
ASOS <b>135.475</b>	DENVER CENTER <b>125.9 284.7</b>	UNICOM <b>123.05</b> (CTAF) <b>Ⓛ</b>
------------------------	-------------------------------------	---



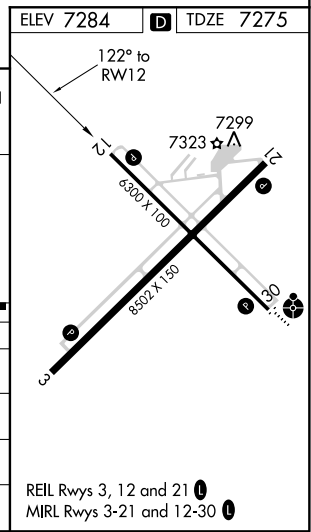
NW-1, 09 NOV 2017 to 07 DEC 2017

NW-1, 09 NOV 2017 to 07 DEC 2017

ELEV 7284	<b>D</b>	TDZE 7275
-----------	----------	-----------



CATEGORY	A	B	C	D
LPV DA	7525-1 250 (300-1)			
LNAV/VNAV DA	7622-1¼ 347 (400-1¼)			
LNAV MDA	7700-1	425 (500-1)	7700-1¼	425 (500-1¼)
CIRCLING	7700-1¼ 416 (500-1¼)	7740-1¼ 456 (500-1¼)	7740-1½ 456 (500-1½)	7840-2 556 (600-2)



REIL Rwy 3, 12 and 21 **Ⓛ**  
MIRL Rwy 3-21 and 12-30 **Ⓛ**