

WAAS CH <b>82724</b> <b>W02A</b>	APP CRS <b>019°</b>	Rwy Idg TDZE Apt Elev	<b>3500</b> <b>1772</b> <b>1789</b>
----------------------------------------	------------------------	-----------------------------	-------------------------------------------

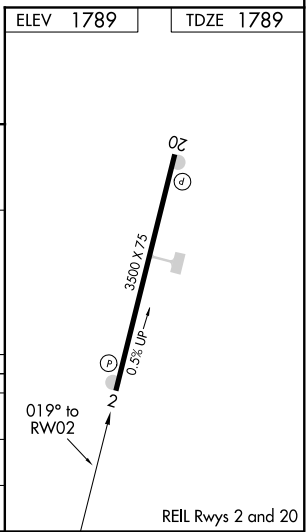
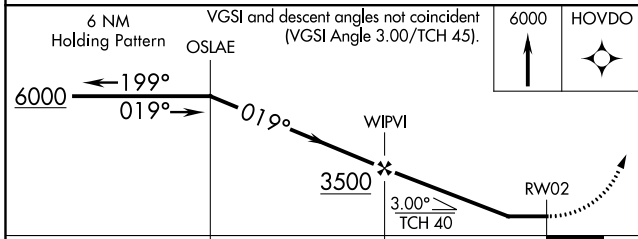
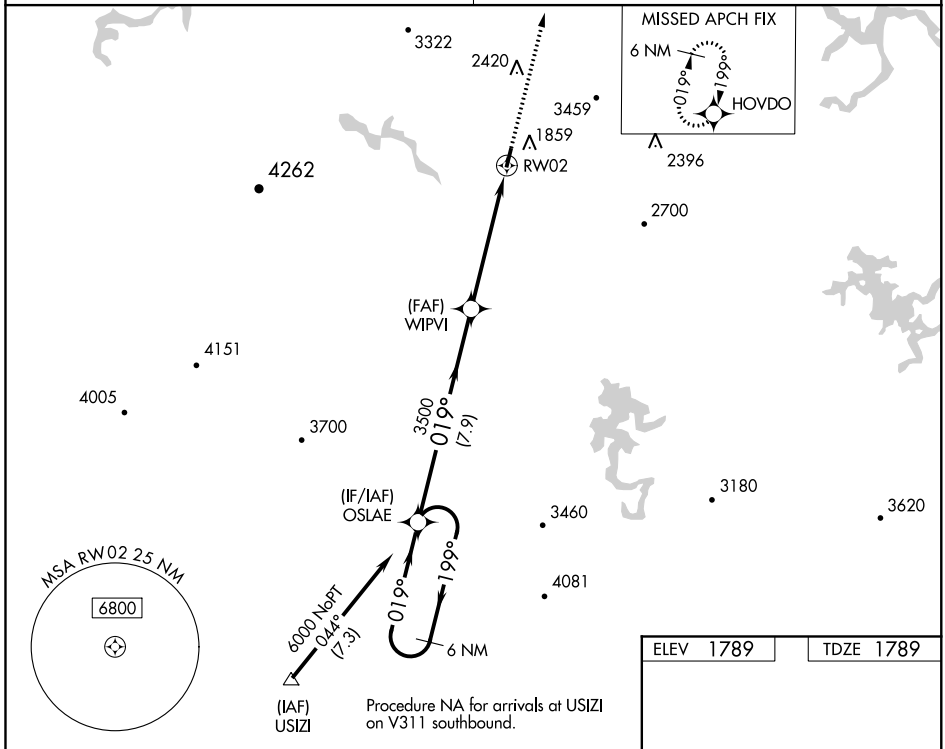
# RNAV (GPS) RWY 2

MARTIN CAMPBELL FIELD (1A3)

**⚠ NA** DME/DME RNP-0.3 NA. Use Western Carolina Rgnl altimeter setting, when not received, use Dalton Muni altimeter setting and increase all MDA 160 feet, and increase LNAV Cats A and B visibility ¼ mile and Cat C ½ mile, and LP Cat A ¼ mile. Procedure NA at night. Rwy 2 helicopter visibility reduction below 1 SM NA.

MISSED APPROACH: Climb to 6000 direct HOVDO and hold, continue climb in hold to 6000.

ATLANTA CENTER <b>133.1 342.425</b>	(CTAF) <b>122.9</b>
----------------------------------------	------------------------



CATEGORY	A	B	C	D
LP MDA	2600-1 811 (900-1)	2600-1¼ 811 (900-1¼)	2600-2½ 811 (900-2½)	NA
LNAV MDA	2600-1 811 (900-1)	2600-1¼ 811 (900-1¼)	2600-2½ 811 (900-2½)	NA
CIRCLING	2880-1¼ 1091 (1100-1¼)	2880-1½ 1091 (1100-1½)	2880-3 1091 (1100-3)	NA

SE-1, 12 OCT 2017 to 09 NOV 2017

SE-1, 12 OCT 2017 to 09 NOV 2017