

WAAS CH 77829 W29A	APP CRS 293°	Rwy Idg TDZE Apt Elev	5249 574 574
--	------------------------	-----------------------------	---

RNAV (GPS) RWY 29

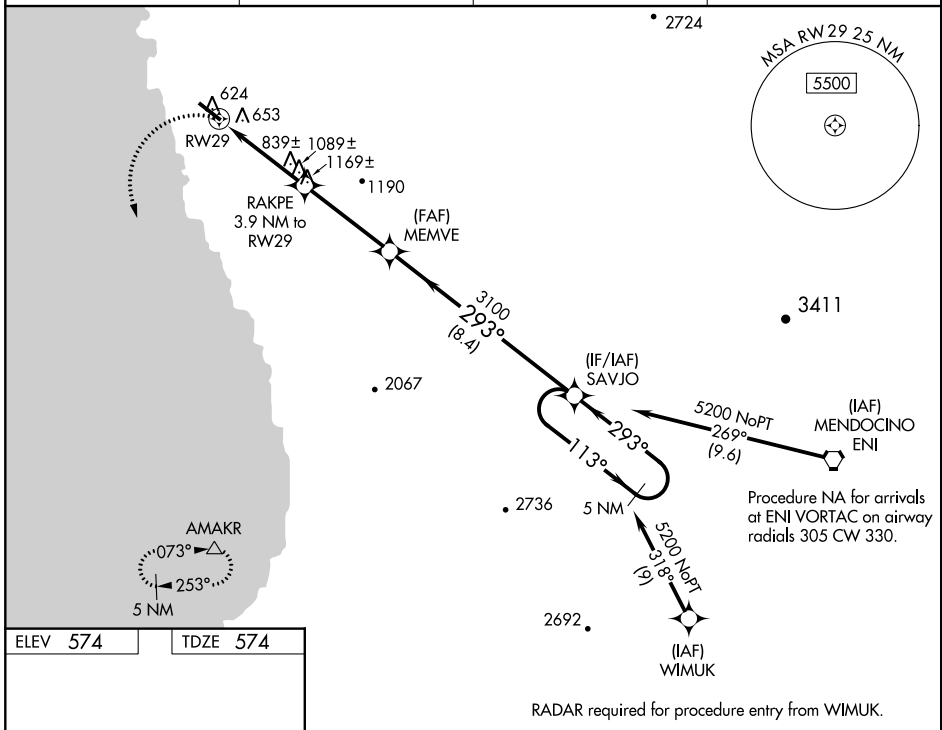
LITTLE RIVER (LLR)

▽ DME/DME RNP-0.3 NA. Helicopter visibility reduction below 1 SM NA. Use Ukiah altimeter setting; when not received, procedure NA. Circling NA northeast of Rwy 11-29. Procedure NA at night.

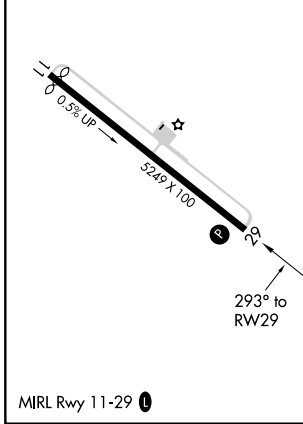
△ NA

MISSED APPROACH: Climbing left turn to 6000 direct AMAKR and hold, continue climb-in-hold to 6000.

AWOS-AV 121.125	UKIAH ASOS 119.275	OAKLAND CENTER 132.2 350.3	AUNICOM 122.7 (CTAF) 0
---------------------------	------------------------------	--------------------------------------	---



ELEV 574	TDZE 574
----------	----------



6000 AMAKR △		VGSI and descent angles not coincident (VGSI Angle 3.50/TCH 42).		5 NM Holding Pattern SAVJO	
RWY 29		RAKPE 3.9 NM to RWY 29	MEMVE	113° → 5200	
3.9 NM		3.9 NM	8.4 NM	← 293°	
CATEGORY		A	B	C	D
LP	MDA	1160-1	586 (600-1)	1160-1¾	586 (600-1¾)
LNAV	MDA	1420-1 846 (900-1)	1420-1¼ 846 (900-1¼)	1420-2¼ 846 (900-2¼)	1420-2½ 846 (900-2½)
CIRCLING		1420-1¼	846 (900-1¼)	1420-2½ 846 (900-2½)	1420-2¾ 846 (900-2¾)

SW-2, 12 OCT 2017 to 09 NOV 2017

SW-2, 12 OCT 2017 to 09 NOV 2017