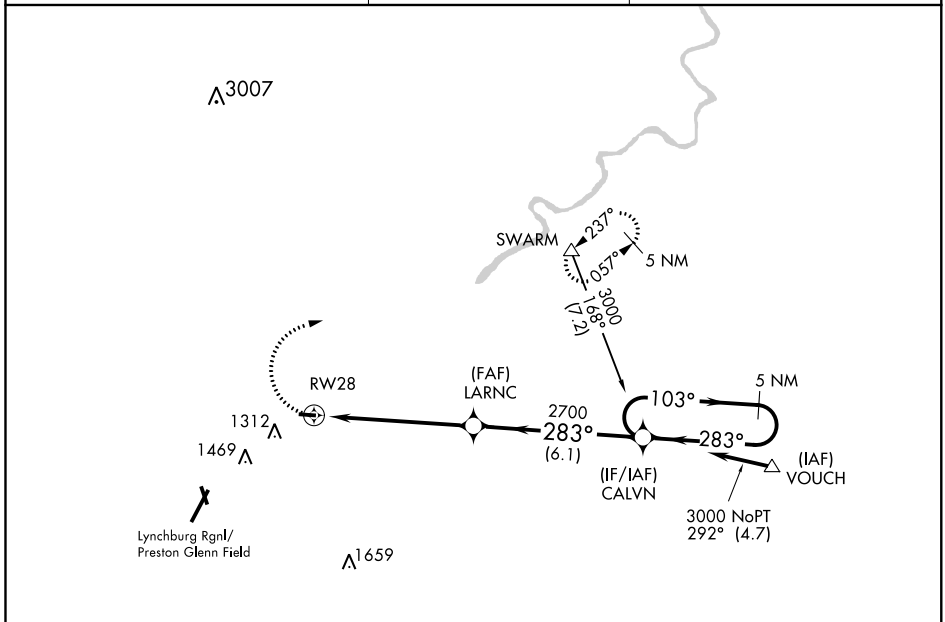


APP CRS 283°	Rwy Idg 2932
	TDZE 939
	Apt Elev 939

RNAV (GPS) RWY 28

FALWELL (W24)

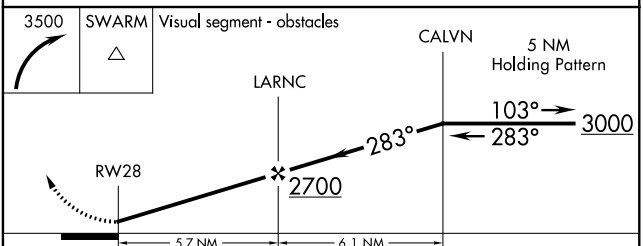
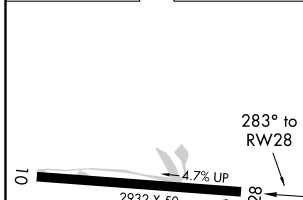
<p>▽ DME/DME RNP-0.3 NA. Use Lynchburg Regional/Preston Glenn Field altimeter setting, when not received use Farmville altimeter setting and increase all MDA 160 feet. Procedure NA at night.</p> <p>△ NA</p>	<p>MISSED APPROACH: Climbing right turn to 3500 direct SWARM and hold.</p>	
<p>LYNCHBURG RGNL/PRESTON GLENN FIELD ASOS/ATIS 119.8</p>	<p>ROANOKE APP CON 135.0 254.32</p>	<p>UNICOM 123.0 (CTAF)</p>



NE-3, 12 OCT 2017 to 09 NOV 2017

NE-3, 12 OCT 2017 to 09 NOV 2017

ELEV 939	TDZE 939
----------	----------



MIRL Rwy 10-28				
CATEGORY	A	B	C	D
LNAV MDA	1460-1	521 (600-1)		NA