

WAAS CH 65826 W20A	APP CRS 197°	Rwy Idg TDZE Apt Elev	4000 348 348
--	------------------------	-----------------------------	---

RNAV (GPS) RWY 20

HOUSTON COUNTY (DKR)

⚠ DME/DME RNP-0.3 NA. When local altimeter setting not received use Palestine altimeter setting and increase all MDA 100 feet.
⚠ Procedure NA at night. Helicopter visibility reduction below 1 SM NA.

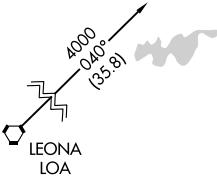
MISSED APPROACH: Climb to 2000 direct ZEPOD then climb to 4000 on track 252° to LOA VORTAC and hold.

AWOS-3
118.775

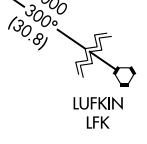
HOUSTON CENTER
134.8 269.6

CTAF
122.9

Procedure NA for arrivals on LOA VORTAC airway radials 323 CW 131.

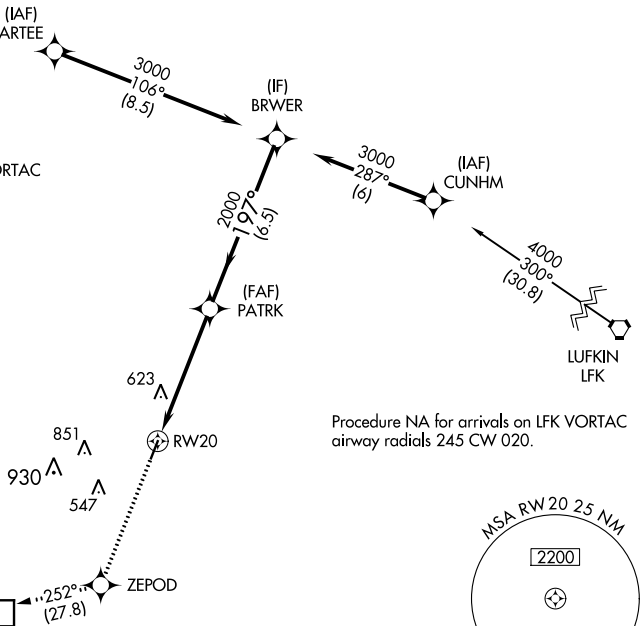
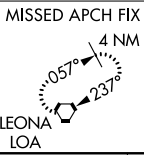


Procedure NA for arrivals on LFK VORTAC airway radials 245 CW 020.

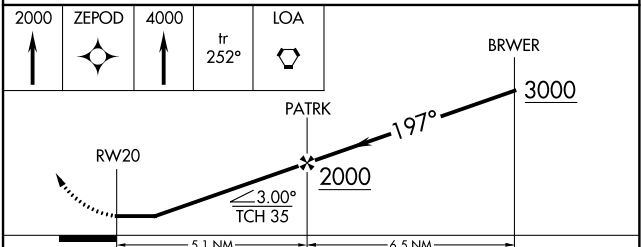
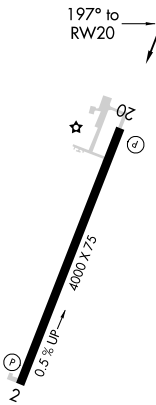


SC-5, 12 OCT 2017 to 09 NOV 2017

SC-5, 12 OCT 2017 to 09 NOV 2017



ELEV	348	TDZE	348
------	-----	------	-----



CATEGORY	A	B	C	D
LP MDA	880-1	532 (600-1)		NA
LNAV MDA	900-1	552 (600-1)		NA
CIRCLING	900-1	552 (600-1)		NA

MIRL Rwy 2-20