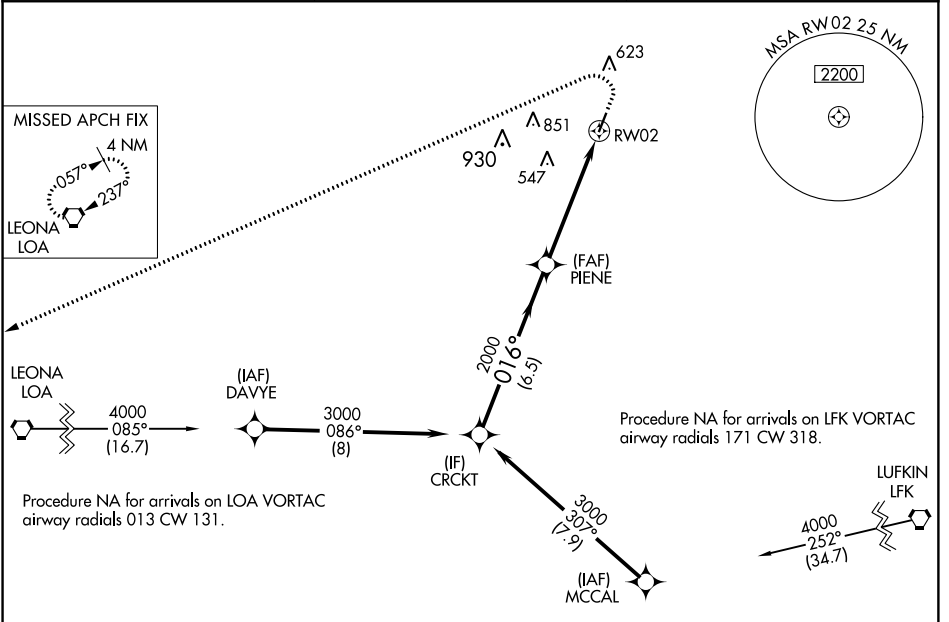


WAAS CH 53526 W02A	APP CRS 016°	Rwy Idg TDZE Apt Elev	4000 341 348
--	------------------------	-----------------------------	---

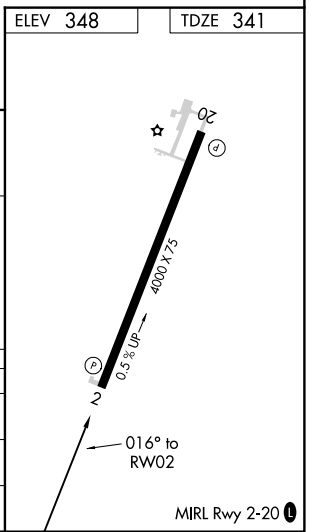
RNAV (GPS) RWY 2

HOUSTON COUNTY (DKR)

⚠ DME/DME RNP-0.3 NA. When local altimeter setting not received, use Palestine altimeter setting and increase all MDA 100 feet. Procedure NA at night. Helicopter visibility reduction below 1 SM NA.	MISSED APPROACH: Climb to 1000 then climbing left turn to 4000 direct LOA VORTAC and hold.	
AWOS-3 118.775	HOUSTON CENTER 134.8 269.6	CTAF 122.9 0



	ELEV 348	TDZE 341					
	↑ 1000	↶ 4000	⬡ LOA				
CRCKT	3000	016°	PIENE	2000	3.00°	TCH 35	RWY02
	6.5 NM		5.2 NM				
CATEGORY	A	B	C	D			
LP MDA	820-1	479 (500-1)	NA				
LNAV MDA	840-1	499 (500-1)	NA				
CIRCLING	880-1	532 (600-1)	NA				



SC-5, 12 OCT 2017 to 09 NOV 2017

SC-5, 12 OCT 2017 to 09 NOV 2017