

APP CRS 232°	Rwy Idg TDZE Apt Elev	N/A N/A 1729
------------------------	-----------------------------	---

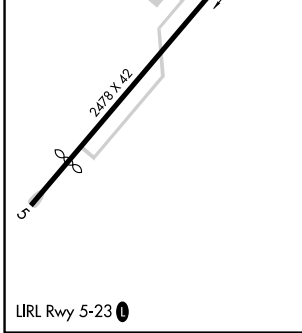
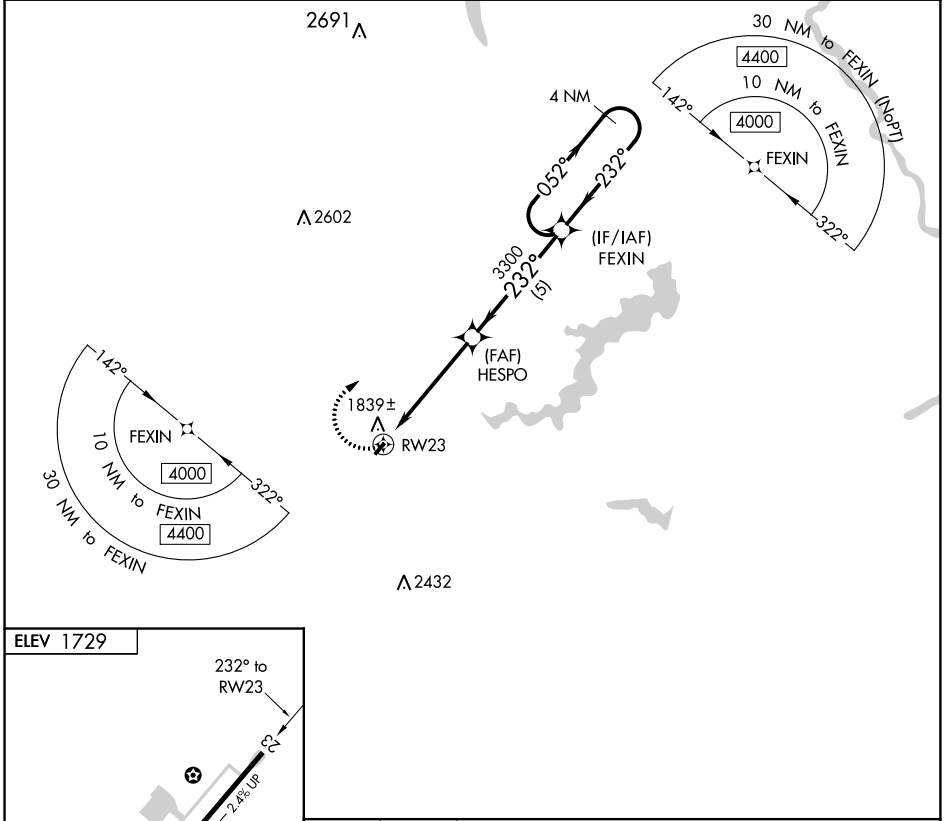
RNAV (GPS)-A

SPRING HILL (70N)

NA DME/DME RNP-0.3 NA. Procedure NA at night. Use Mount Pocono altimeter setting; when not received, use Wilkes-Barre/Scranton altimeter setting and increase all MDA 100 feet and Cat B visibility ¼ mile. Helicopter visibility reduction below 1 SM NA.

MISSED APPROACH: Climbing right turn to 4000 direct FEXIN and hold.

MOUNT POCONO ASOS 120.275	WILKES-BARRE APP CON 126.3 256.7	CTAF 122.9
-------------------------------------	--	-------------------



4000	FEXIN	Visual Segment - Obstacles.	FEXIN
		HESPO	052° → 4000
RW23		232°	← 232°
5 NM		5 NM	
CATEGORY	A	B	C
C CIRCLING	2600-1¼ 871 (900-1¼)	2620-1¼ 891 (900-1¼)	NA

NE-4, 12 OCT 2017 to 09 NOV 2017

NE-4, 12 OCT 2017 to 09 NOV 2017