

WAAS CH 63022 W06A	APP CRS 067°	Rwy Idg TDZE Apt Elev	5500 665 665
--	------------------------	-----------------------------	---

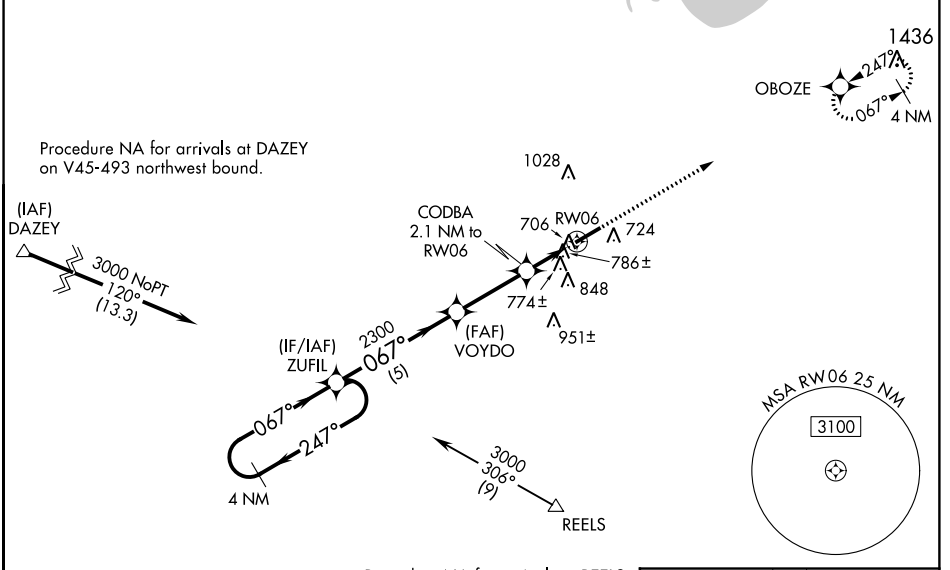
RNAV (GPS) RWY 6

SANDUSKY COUNTY RGNL (S24)

NA For uncompensated Baro-VNAV systems, LNAV/VNAV NA below -16°C (4°F) or above 54°C (130°F). DME/DME RNP-0.3 NA. When local altimeter setting not received, use Toledo Express altimeter setting and increase all DA 93 feet and all MDA 100 feet; increase LPV all Cats, LNAV/VNAV all Cats and LNAV Cats C/D visibility 3/8 mile and increase Circling Cat C/D visibility 1/2 mile. Baro-VNAV and VDP NA when using Toledo Express altimeter setting.

MISSED APPROACH:
Climb to 3000 direct OBOZE and hold.

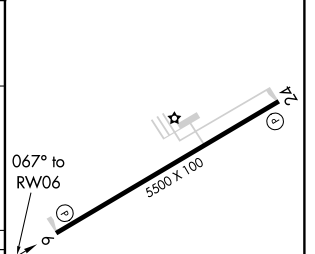
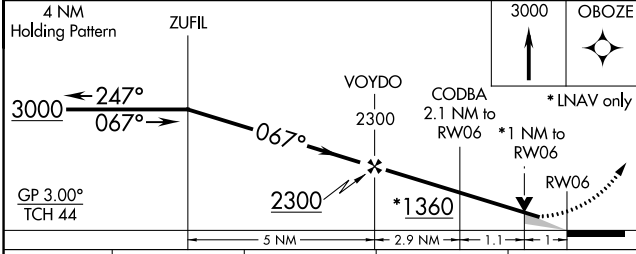
AWOS-3 119.575	MANSFIELD APP CON★ 127.35 390.8 (360°- 180°) TOLEDO APP CON 126.1 307.0 (180°-360°)	UNICOM 123.05 (CTAF)
--------------------------	--	--------------------------------



Procedure NA for arrivals at DAZEY on V45-493 northwest bound.

Procedure NA for arrivals at REELS on V92 southeast bound.

ELEV 665	TDZE 665
----------	----------



CATEGORY	A	B	C	D
LPV DA		915-3/4	250 (300-3/4)	
LNAV/VNAV DA		948-7/8	283 (300-7/8)	
LNAV MDA		1040-1	375 (400-1)	
CIRCLING	1120-1 455 (500-1)	1160-1 495 (500-1)	1380-2 715 (800-2)	1380-2 1/4 715 (800-2 1/4)

REIL Rwys 6 and 24
MIRL Rwy 6-24

EC-2, 12 OCT 2017 to 09 NOV 2017

EC-2, 12 OCT 2017 to 09 NOV 2017