

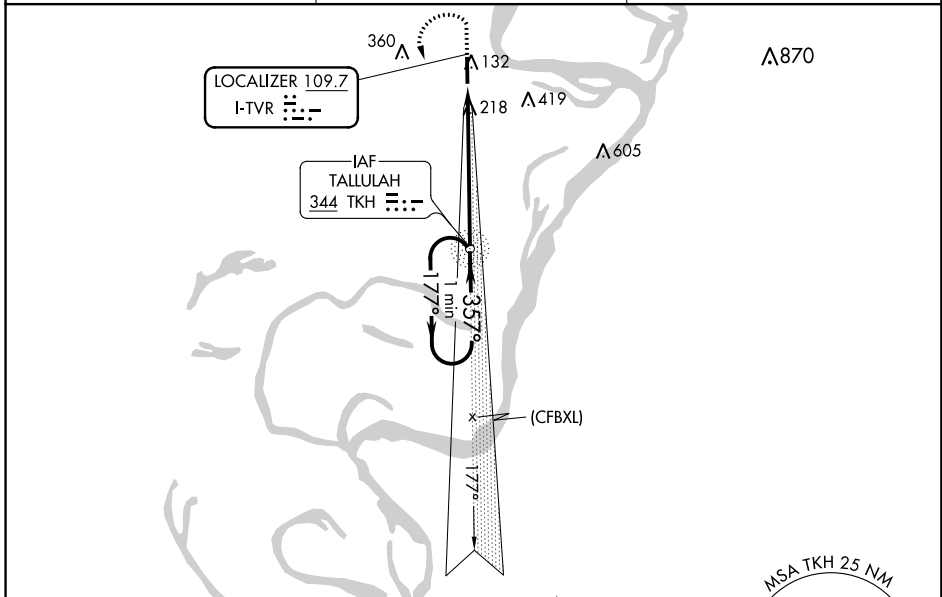
LOC I-TVR <b>109.7</b>	APP CRS <b>357°</b>	Rwy Idg <b>5002</b> TDZE <b>86</b> Apt Elev <b>86</b>
---------------------------	------------------------	---

# ILS or LOC RWY 36

VICKSBURG TALLULAH RGNL (TVR)

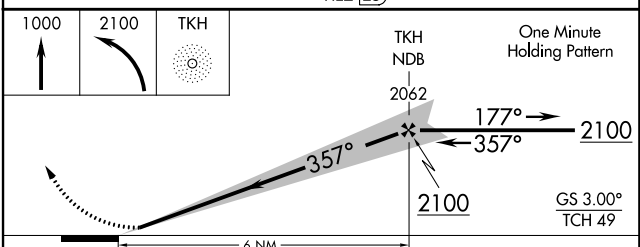
<p><b>ADF</b> required. When local altimeter setting not received, use Vicksburg Muni, MS altimeter setting and increase S-ILS 36 DA to 309 feet; increase all MDA 40 feet and visibility Cats C and D ¼ mile.</p>	<p>SSALR </p>	<p>MISSED APPROACH: Climb to 1000 then climbing left turn to 2100 direct TKH NDB and hold.</p>
--	---------------	--

ASOS <b>118.525</b>	MEMPHIS CENTER <b>132.5 259.1</b>	UNICOM <b>123.0 (CTAF) 0</b>
------------------------	--------------------------------------	---------------------------------



## ADF REQUIRED

ELEV 86	<b>D</b>	TDZE 86			
REIL Rwy 18	MIRL Rwy 18-36	36 357° 6 NM from FAF			
FAF to MAP 6 NM					
Knots	60	90	120	150	180
Min:Sec	6:00	4:00	3:00	2:24	2:00



	TKH NDB	2062	TKH	2100	GS 3.00°	TCH 49
CATEGORY	A	B	C	D		
S-ILS 36	286-½		200 (200-½)			
S-LOC 36	540-½	454 (500-½)	540-⅞	454 (500-⅞)		
<b>C</b> CIRCLING	540-1	454 (500-1)	720-1¾ 634 (700-1¾)	720-2 634 (700-2)		

SC-4, 12 OCT 2017 to 09 NOV 2017

SC-4, 12 OCT 2017 to 09 NOV 2017