

WAAS CH <b>93718</b> <b>W19A</b>	APP CRS <b>187°</b>	Rwy Idg TDZE Apt Elev	<b>5002</b> <b>441</b> <b>441</b>
--	------------------------	-----------------------------	---

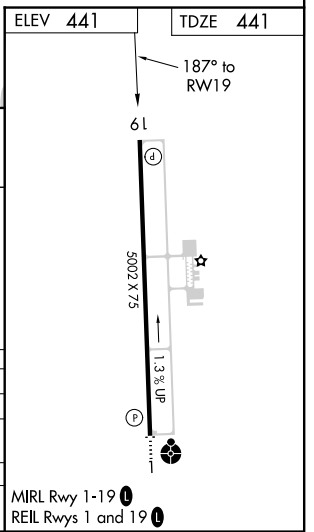
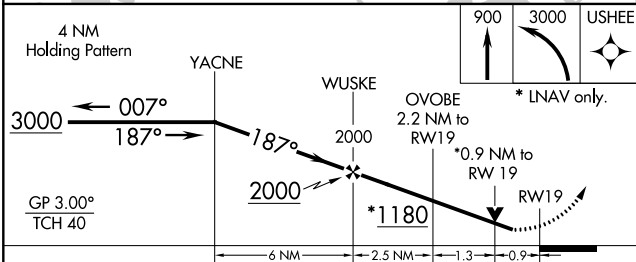
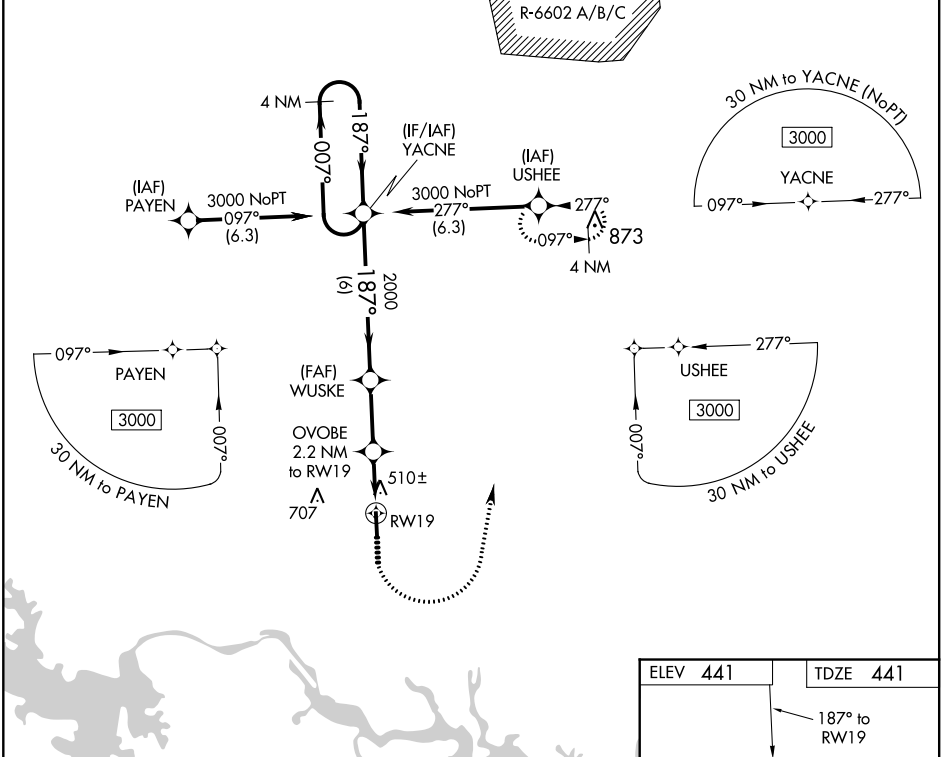
# RNAV (GPS) RWY 19

MECKLENBURG-BRUNSWICK RGNL (A/C)

**▽** For uncompensated Baro-VNAV systems, LNAV/VNAV NA below -15°C (5°F) or above 54°C (130°F). DME/DME RNP-0.3 NA. Rwy 19 helicopter visibility reduction below ¾ SM NA.

MISSED APPROACH: Climb to 900 then climbing left turn to 3000 direct USHEE and hold.

AWOS-3 <b>127.525</b>	WASHINGTON CENTER <b>118.75 377.1</b>	GCO <b>135.075</b>	UNICOM <b>122.8 (CTAF) 0</b>
--------------------------	--	-----------------------	---------------------------------



CATEGORY	A	B	C	D
LPV DA		691-1	250 (300-1)	
LNAV/VNAV DA		710-1	269 (300-1)	
LNAV MDA		760-1	319 (400-1)	
<b>CIRCLING</b>	860-1 419 (500-1)	900-1 459 (500-1)	1060-1 ¾ 619 (700-1¾)	1060-2 619 (700-2)

MIRL Rwy 1-19 0  
REIL Rws 1 and 19 0

NE-3, 12 OCT 2017 to 09 NOV 2017

NE-3, 12 OCT 2017 to 09 NOV 2017