

(PADRZ1.PADRZ) 17061

PADRZ ONE DEPARTURE (RNAV)

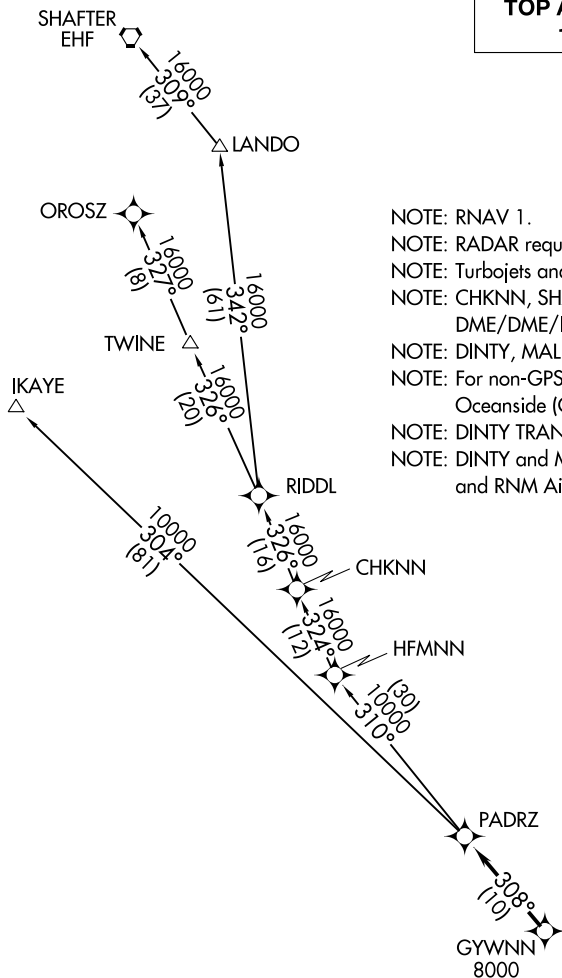
SL-6667 (FAA)

RAMONA (RNM)
RAMONA, CALIFORNIA

**TOP ALTITUDE:
15000**

ATIS
132.025
RAMONA TOWER *
119.875
SOCAL DEP CON
119.6 363.1

- NOTE: RNAV 1.
- NOTE: RADAR required.
- NOTE: Turbojets and Turboprops only.
- NOTE: CHKNN, SHAFTER, IKAYE, OROSZ TRANSITIONS:
DME/DME/IRU or GPS Required.
- NOTE: DINTY, MALIT TRANSITIONS: GPS Only.
- NOTE: For non-GPS equipped aircraft,
Oceanside (OCN) must be operational.
- NOTE: DINTY TRANSITION: ATC assigned only.
- NOTE: DINTY and MALIT TRANSITIONS NA from SEE, SDM
and RNM Airports.



TAKEOFF MINIMUMS

- Rwy 9: NA-ATC.
- Rwy 27: Standard with minimum climb
of 332' per NM to 2600.

TAKEOFF OBSTACLE NOTES

- Rwy 27: Tree 657' from DER, 12' left of centerline, 100' AGL/1499' MSL.
Trees 1.9 NM from DER, 92' left of centerline, up to 100' AGL/1719' MSL.

NOTE: Chart not to scale.

(NARRATIVE ON FOLLOWING PAGE)

PADRZ ONE DEPARTURE (RNAV)

(PADRZ1.PADRZ) 02MAR17

RAMONA, CALIFORNIA
RAMONA (RNM)

SW-3, 12 OCT 2017 to 09 NOV 2017

SW-3, 12 OCT 2017 to 09 NOV 2017