

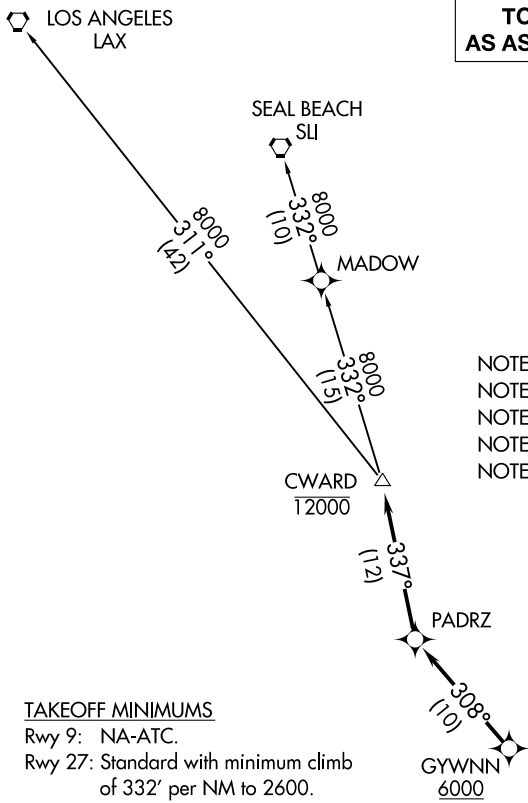
(CWARD1.CWARD) 17061

# CWARD ONE DEPARTURE (RNAV) SL-6667 (FAA)

RAMONA (RNM)  
RAMONA, CALIFORNIA

ATIS  
132.025  
RAMONA TOWER \*  
119.875  
SOCAL DEP CON  
119.6 363.1

**TOP ALTITUDE:  
AS ASSIGNED BY ATC**



- NOTE: RNAV 1.
- NOTE: GPS or DME/DME/IRU required.
- NOTE: Turbojet or turboprop only.
- NOTE: Tower En Route control only.
- NOTE: RADAR required.

### TAKEOFF MINIMUMS

Rwy 9: NA-ATC.  
 Rwy 27: Standard with minimum climb  
 of 332' per NM to 2600.

### TAKEOFF OBSTACLE NOTES

Rwy 27: Tree 657' from DER, 12' left of centerline, 100' AGL/1499' MSL.  
 Trees 1.9 NM from DER, 92' left of centerline, up to 100' AGL/1719' MSL.

NOTE: Chart not to scale.

### DEPARTURE ROUTE DESCRIPTION

**TAKEOFF RUNWAY 27:** Climb heading 268° to 2600, expect vectors to GYWNN, then on track 308° to PADRZ, then on track 337° to cross CWARD at or below 12000, thence. . . .

. . . .on (transition), maintain ATC assigned altitude. Expect filed altitude 10 minutes after departure.

- LOS ANGELES TRANSITION (CWARD1.LAX)
- SEAL BEACH TRANSITION (CWARD1.SLI)

# CWARD ONE DEPARTURE (RNAV)

(CWARD1.CWARD) 02MAR17

RAMONA, CALIFORNIA  
RAMONA (RNM)

SW-3, 12 OCT 2017 to 09 NOV 2017

SW-3, 12 OCT 2017 to 09 NOV 2017