

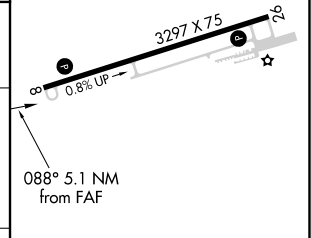
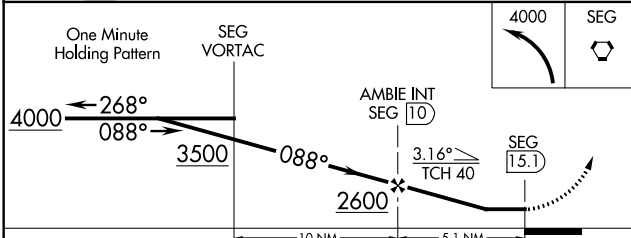
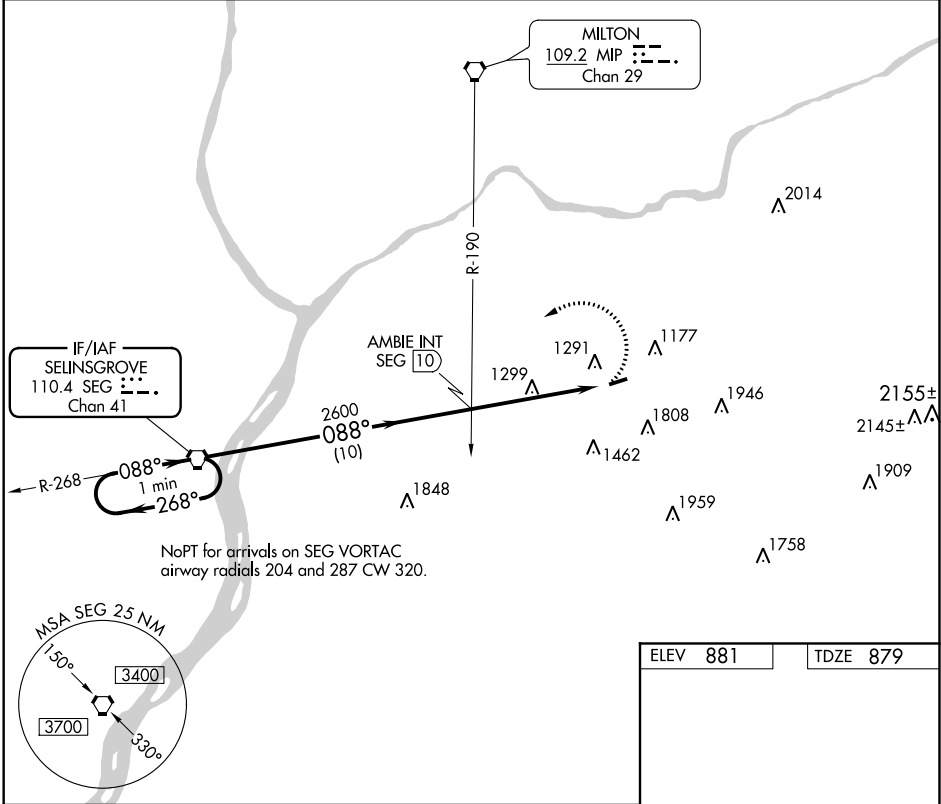
VORTAC SEG 110.4 Chan 41	APP CRS 088°	Rwy Idg TDZE Apt Elev	3297 879 881
--	------------------------	-----------------------------	---

VOR RWY 8
NORTHUMBERLAND COUNTY (N79)

▽ When local altimeter setting not received, use Selinsgrove altimeter setting and increase all MDA 100 feet. Procedure NA at night.
△ NA Helicopter visibility reduction below 1 SM NA.

MISSED APPROACH: Climbing left turn to 4000 direct SEG VORTAC and hold.

AWOS-3 119.175	HARRISBURG APP CON 118.25 269.45	UNICOM 122.8 (CTAF)	121.8 0
--------------------------	--	-------------------------------	----------------



CATEGORY	A	B	C	D
S-8	1980-1¼ 1101 (1200-1¼)	1980-1½ 1101 (1200-1½)	1980-3 1101 (1200-3)	NA
CIRCLING	1980-1¼ 1099 (1100-1¼)	1980-1½ 1099 (1100-1½)	1980-3 1099 (1100-3)	NA

MRL Rwy 8-26
REIL Rws 8 and 26

FAF to MAP 5.1 NM

Knots	60	90	120	150	180
Min:Sec	5:06	3:24	2:33	2:02	1:42

NE-4, 12 OCT 2017 to 09 NOV 2017

NE-4, 12 OCT 2017 to 09 NOV 2017