

WAAS CH <b>50424</b> <b>W26A</b>	APP CRS <b>264°</b>	Rwy Idg TDZE Apt Elev	<b>3297</b> <b>881</b> <b>881</b>
--	------------------------	-----------------------------	---

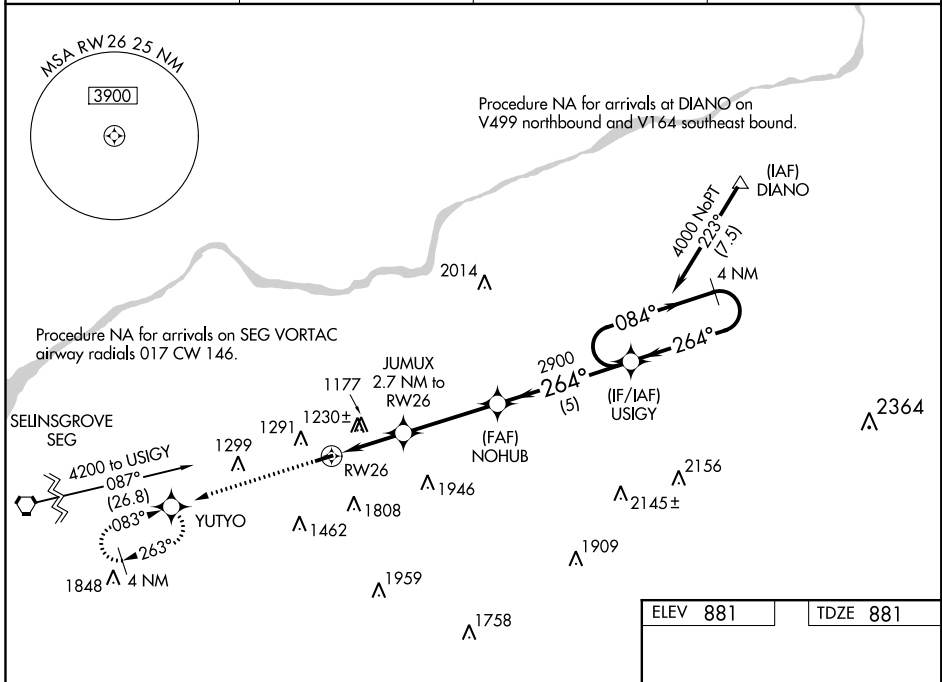
# RNAV (GPS) RWY 26

NORTHUMBERLAND COUNTY (N79)

**▼** Baro-VNAV NA when using Selinsgrove altimeter setting. For uncompensated Baro-VNAV systems, LNAV/VNAV NA below -16°C (4°F) or above 54°C (130°F).  
**▲ NA** When local altimeter setting not received, use Selinsgrove altimeter setting and increase all DA 94 feet and all MDA 100 feet, increase visibility LPV all Cats 3/8 mile. LNAV/VNAV all Cats 1/4 mile and LNAV Cat C 1/4 mile. DME/DME RNP-0.3 NA. Procedure NA at night. Helicopter visibility reduction below 1 SM NA.

MISSED APPROACH:  
Climb to 3000 direct YUTYO and hold.

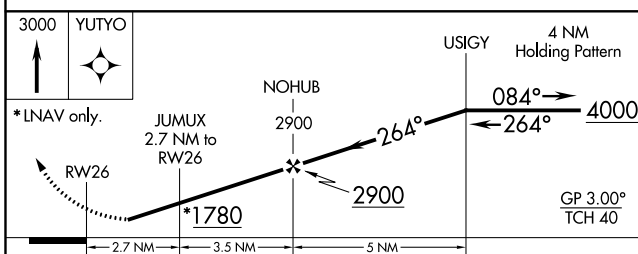
AWOS-3 <b>119.175</b>	HARRISBURG APP CON <b>118.25 269.45</b>	UNICOM <b>122.8</b> (CTAF)	<b>121.8 0</b>
--------------------------	--	-------------------------------	----------------



NE-4, 12 OCT 2017 to 09 NOV 2017

NE-4, 12 OCT 2017 to 09 NOV 2017

ELEV 881	TDZE 881
----------	----------



CATEGORY	A	B	C	D
LPV DA	1436-1 <sup>7</sup> / <sub>8</sub>	555 (600-1 <sup>7</sup> / <sub>8</sub> )		NA
LNAV/VNAV DA	1559-2 <sup>1</sup> / <sub>2</sub>	678 (700-2 <sup>1</sup> / <sub>2</sub> )		NA
LNAV MDA	1480-1	599 (600-1)	1480-1 <sup>3</sup> / <sub>4</sub> 599 (600-1 <sup>3</sup> / <sub>4</sub> )	NA
CIRCLING	1820-1 <sup>1</sup> / <sub>4</sub> 939 (1000-1 <sup>1</sup> / <sub>4</sub> )	1860-1 <sup>1</sup> / <sub>2</sub> 979 (1000-1 <sup>1</sup> / <sub>2</sub> )	1880-3 999 (1000-3)	NA

