

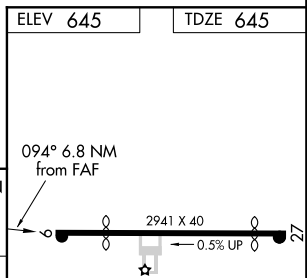
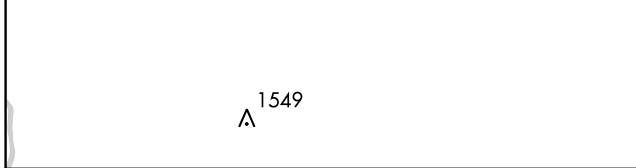
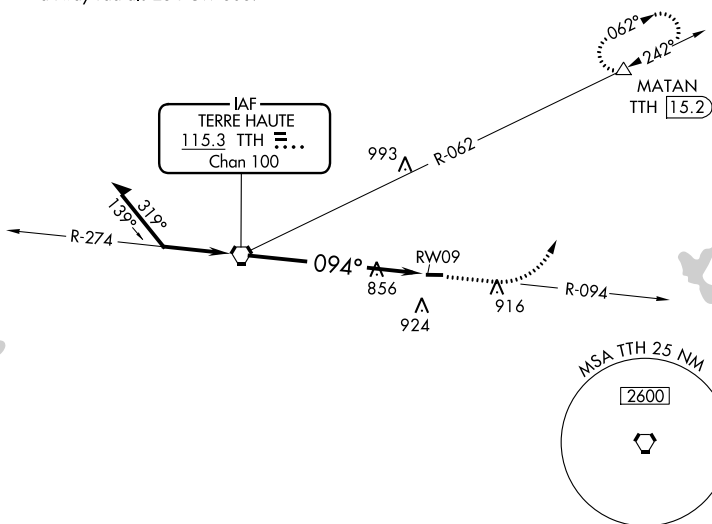
VORTAC TTH <b>115.3</b> Chan <b>100</b>	APP CRS <b>094°</b>	Rwy Idg TDZE Apt Elev	<b>2321</b> <b>645</b> <b>645</b>
---	------------------------	-----------------------------	---

**VOR RWY 9**  
BRAZIL CLAY COUNTY (ØI2)

<p><b>NA</b></p> <p>DME required. Procedure NA at night. Use Terre Haute Rgnl altimeter setting.</p>	<p>MISSED APPROACH: Climb to 2000 then climbing left turn to 2700 on heading 020° and TTH VORTAC R-062 to MATAN/15.2 DME and hold.</p>
--	--

<p>HULMAN APP CON <b>125.45 339.8</b></p>	<p>UNICOM <b>122.8 (CTAF) Ø</b></p>
---	---

Procedure NA for arrivals on the THH VORTAC  
airway radials 254 CW 303.



Remain within 5 NM	2700	274°	TTH VORTAC 6000	2000	2700	TTH	MATAN
	2700	094°	2700	hdg 020°	R-062		
						RW09 TTH [6.8]	
						2.78° TCH 45	
						6.8 NM	

CATEGORY	A	B	C	D
S-9	1300-1 655 (700-1)		NA	
CIRCLING	1360-1 715 (800-1)		NA	

ELEV 645	TDZE 645				
URL Rwy 9-27 Ø					
FAF to MAP 6.8 NM					
Knots	60	90	120	150	180
Min:Sec	6:48	4:32	3:24	2:43	2:16

EC-2, 12 OCT 2017 to 09 NOV 2017

EC-2, 12 OCT 2017 to 09 NOV 2017