

APP CRS <b>272°</b>	Rwy Idg TDZE Apt Elev	<b>2499</b> <b>645</b> <b>645</b>
------------------------	-----------------------------	---

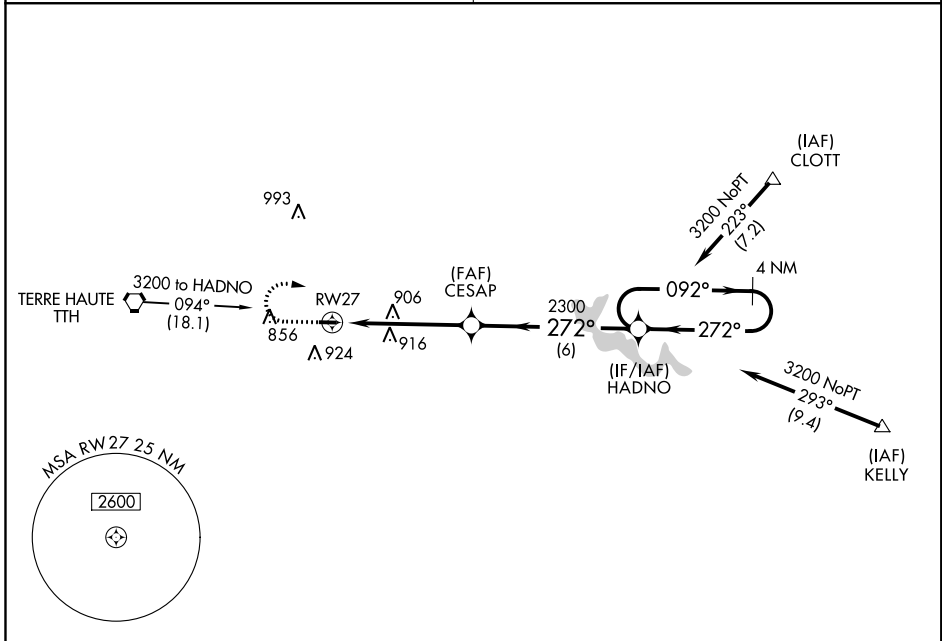
# RNAV (GPS) RWY 27

BRAZIL CLAY COUNTY (ØI2)

**▼** DME/DME RNP-0.3 NA. Use Terre Haute altimeter setting.  
**▲** NA Procedure NA at night. Helicopter visibility reduction below 1 SM NA.

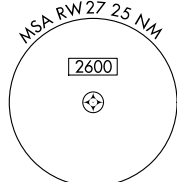
MISSED APPROACH: Climb to 2300 then climbing right turn to 3200 direct HADNO WP and hold.

HULMAN APP CON <b>125.45 339.8</b>	UNICOM <b>122.8</b> (CTAF) <b>Ø</b>
---------------------------------------	--

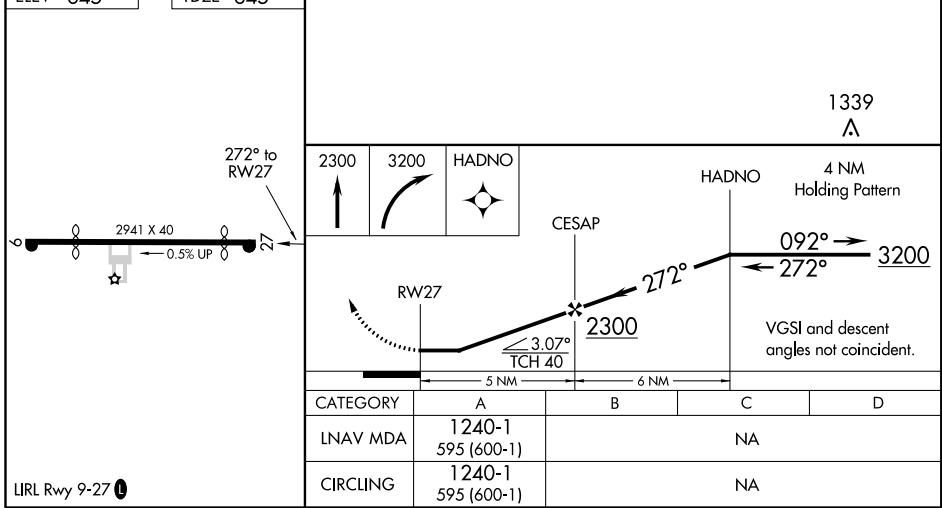


EC-2, 12 OCT 2017 to 09 NOV 2017

EC-2, 12 OCT 2017 to 09 NOV 2017



ELEV 645	TDZE 645
----------	----------



LIRL Rwy 9-27 **Ø**

	2300	3200	HADNO	1339 <b>▲</b>
	↑	↷	✦	
	RWY 27		CESAP	HADNO
	5 NM		6 NM	4 NM Holding Pattern
	≤ 3.07% TCH 40		2300	3200
	272°		092°	272°
	VGSi and descent angles not coincident.			
CATEGORY	A	B	C	D
LNAV MDA	1240-1 595 (600-1)		NA	
CIRCLING	1240-1 595 (600-1)		NA	