

RNAV (GPS) RWY 9

BROOKSVILLE-TAMPA BAY RGNL (BKV)

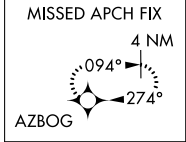
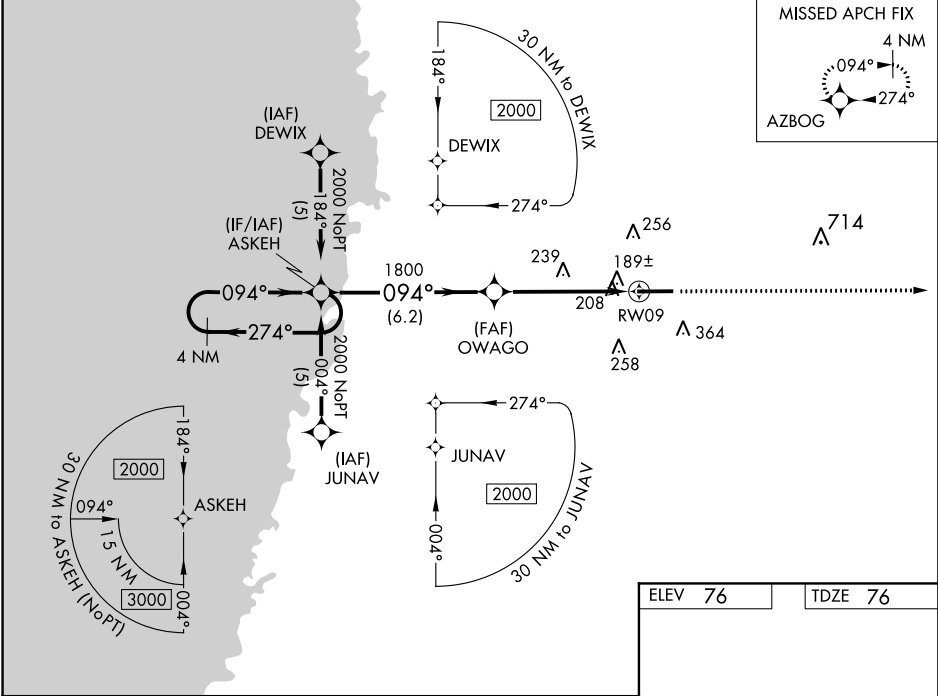
APP CRS	Rwy Idg	7001
094°	TDZE	76
	Apt Elev	76

⚠ Baro-VNAV NA when using Tampa Intl altimeter setting. For uncompensated Baro-VNAV systems, LNAV/VNAV NA below -15°C (5°F) or above 48°C (118°F).
⚠ DME/DME RNP-0.3 NA. When local altimeter setting not received, use Tampa Intl altimeter setting and increase all DA 77 feet and all MDA 80 feet, increase LNAV/VNAV all Cats and LNAV Cat C visibility ¼ mile. For inop MALSRS increase LNAV Cat D visibility to 1 ¼ mile. Circling Rwy 3/21/27 NA at night.

MALSRS

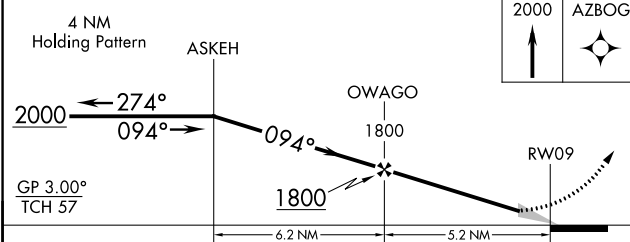
MISSED APPROACH:
Climb to 2000 direct
AZBOG and hold.

ASOS	TAMPA APP CON	BROOKSVILLE TOWER ★	GND CON	CLNC DEL	UNICOM
134.725	125.3 316.05	118.55 (CTAF) 0	121.4	119.125	123.0

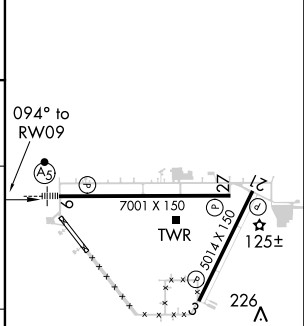


SE-3, 12 OCT 2017 to 09 NOV 2017

SE-3, 12 OCT 2017 to 09 NOV 2017



ELEV 76	TDZE 76
---------	---------



CATEGORY	A	B	C	D
LNAV/VNAV DA	507-1 431 (500-1)			
LNAV MDA	500-½	424 (500-½)	500-¾ 424 (500-¾)	500-1 424 (500-1)
CIRCLING	680-1	604 (700-1)	680-1¾ 604 (700-1¾)	680-2 604 (700-2)

MIRL Rwy 3-21 and 9-27