

LOC I-OSV <b>111.1</b>	APP CRS <b>094°</b>	Rwy Idg TDZE Apt Elev	<b>7001</b> <b>76</b> <b>76</b>
---------------------------	------------------------	-----------------------------	---------------------------------------

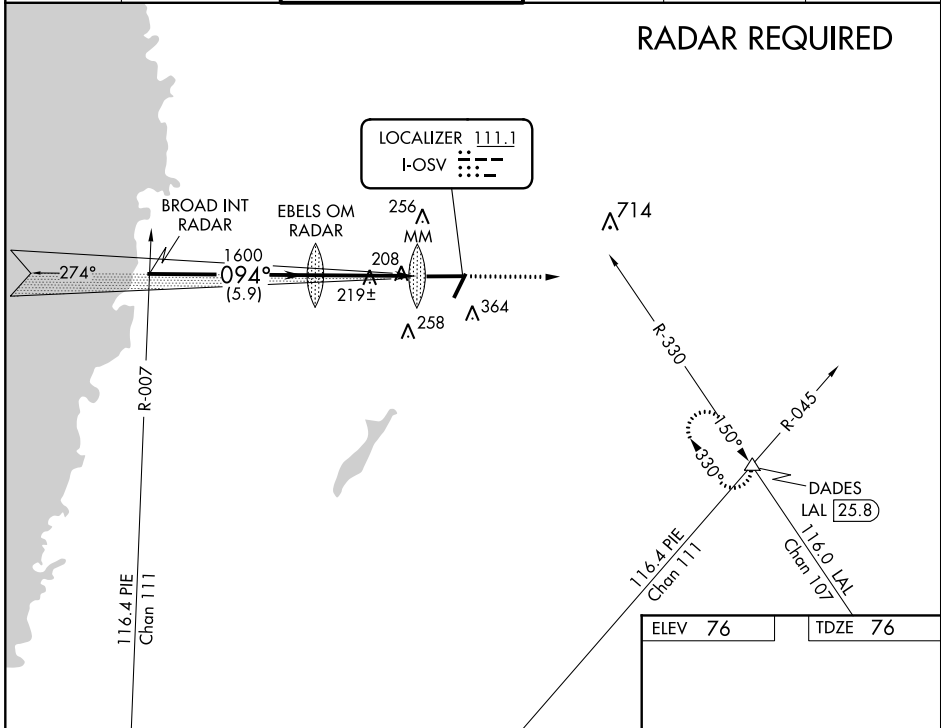
**ILS or LOC RWY 9**  
BROOKSVILLE-TAMPA BAY RGNL (BKV)

**▽** DME required. When local altimeter setting not received use Tampa Intl altimeter setting and increase all DA to 353 and all MDA 80 feet, increase S-LOC 9 Cat D and Circling Cat C/D visibility ¼ mile. For inop MALSR when using Tampa Intl increase S-ILS 9 all Cats visibility to 1 mile. Circling to Rwy 3/21/27 NA at night.

**▲ NA**

**MALSR**  
MISSED APPROACH: Climb to 3000 on heading 090° and LAL R-330 to DADES/LAL 25.8 DME and hold.

ASOS <b>134.725</b>	TAMPA APP CON <b>125.3 316.05</b>	BROOKSVILLE TOWER ★ <b>118.55 (CTAF) 0</b>	GND CON <b>121.4</b>	CLNC DEL <b>119.125</b>	UNICOM <b>123.0</b>
------------------------	--------------------------------------	---	-------------------------	----------------------------	------------------------



SE-3, 12 OCT 2017 to 09 NOV 2017

SE-3, 12 OCT 2017 to 09 NOV 2017

BROAD INT RADAR		EBELS OM RADAR		3000 hdg 090°		LAL R-330	DADES ▲
2000		1438		1600		094° 4.1 NM from FAF	
GS 3.00° TCH 57		MM		226		7001 X 150 TWR 125±	
5.9 NM		3.7 NM		0.4		MIRL Rwys 3-21 and 9-27	
CATEGORY	A	B	C	D	FAF to MAP 4.1 NM		
S-ILS 9	276-½		200 (200-½)		Knots 60 90 120 150 180		
S-LOC 9	480-½ 404 (500-½)		480-¾ 404 (500-¾)		Min:Sec 4:06 2:44 2:03 1:38 1:22		
CIRCLING	680-1 604 (700-1)		680-1¾ 604 (700-¾)				