

WAAS CH 48807 W04A	APP CRS 035°	Rwy Idg TDZE Apt Elev	7193 24 26
--	------------------------	-----------------------------	---------------------------------------

RNAV (GPS) RWY 4

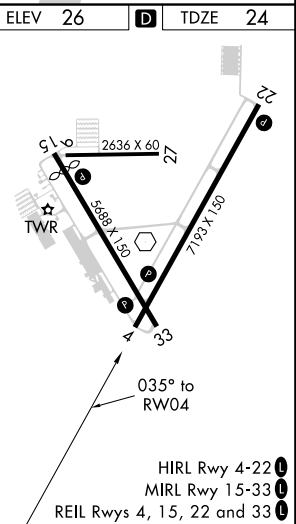
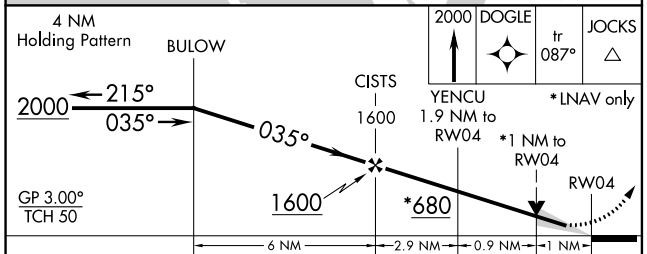
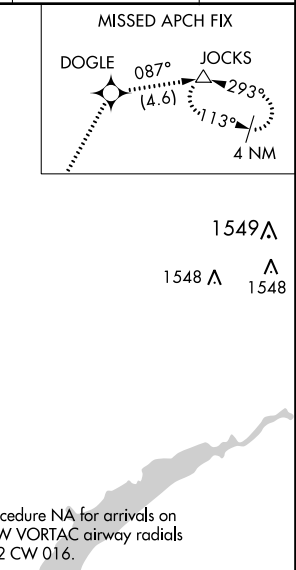
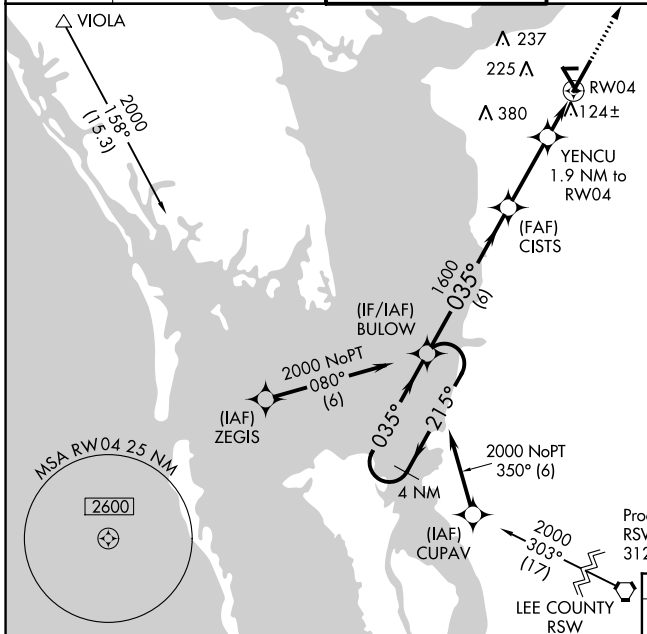
PUNTA GORDA (PGD)

⚠ For uncompensated Baro-VNAV systems, LNAV/VNAV NA below 0°C (32°F) or above 54°C (130°F). DME/DME RNP-0.3 NA. When local altimeter setting not received, use Page Field altimeter setting and increase all DA 50 feet and all MDA 60 feet; increase LNAV/VNAV all Cats visibility ¼ mile, LNAV Cats C and D visibility ½ mile, and Circling Cats C and D visibility ¼ mile. Baro-VNAV and VDP NA when using Page Field altimeter setting.

MISSED APPROACH: Climb to 2000 direct DOGLE and track 087° to JOCKS and hold.

ASOS 135.675	FORT MYERS APP CON ★ 125.15 306.2	PUNTA GORDA TOWER ★ 121.0 (CTAF) 0	GND CON 119.55
------------------------	---	---	--------------------------

CLNC DEL 119.55 127.05 when twr closed	UNICOM 122.975
--	--------------------------



CATEGORY	A	B	C	D
LPV DA		224-¾	200 (200-¾)	
LNAV/VNAV DA		306-⅞	282 (300-⅞)	
LNAV MDA		380-1	356 (400-1)	
C CIRCLING	440-1 414 (500-1)	580-1 554 (600-1)	600-1½ 574 (600-1½)	740-2¼ 714 (800-2¼)

SE-3, 12 OCT 2017 to 09 NOV 2017

SE-3, 12 OCT 2017 to 09 NOV 2017

HIRL Rwy 4-22 **0**
MIRL Rwy 15-33 **0**
REIL Rws 4, 15, 22 and 33 **0**