

WAAS CH 66025 W01A	APP CRS 006°	Rwy Idg TDZE 142 Apt Elev 148	5182
--	------------------------	---	-------------

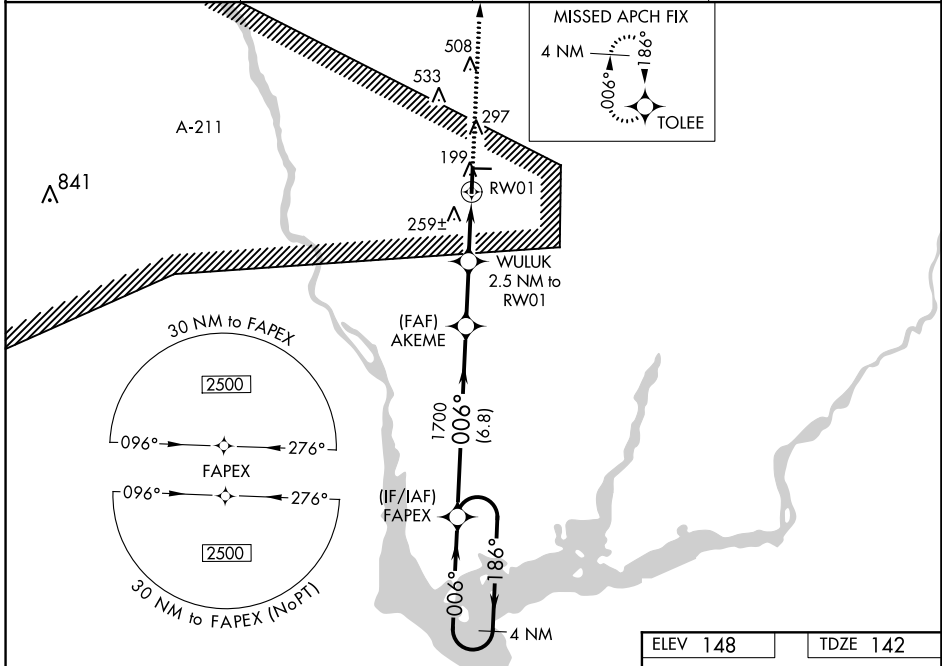
RNAV (GPS) RWY 1

DONALSONVILLE MUNI (17J)

Baro-VNAV NA. DME/DME RNP-0.3 NA. Use Bainbridge altimeter setting; when not received, use Marianna altimeter setting and increase all DA 19 feet, and all MDA 20 feet; increase LPV all Cats visibility 1/8 mile and increase Circling Cats C/D visibility 1/4 mile. Night Landing: Rwy 1 NA. Helicopter visibility reduction below 1 SM NA.

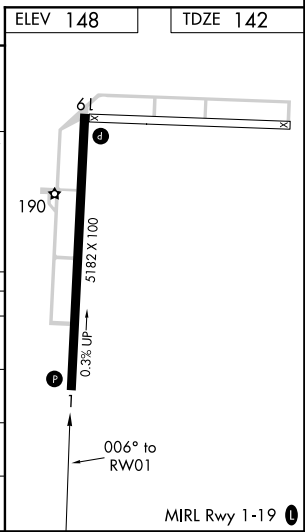
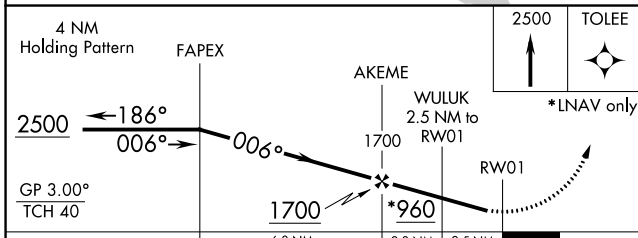
MISSED APPROACH: Climb to 2500 direct TOLEE and hold.

AWOS-3PT 119.675	BAINBRIDGE AWOS-3 121.125	CAIRNS APP CON ★ 125.4 327.125	CTAF 122.9
----------------------------	-------------------------------------	--	----------------------



SE-4, 12 OCT 2017 to 09 NOV 2017

SE-4, 12 OCT 2017 to 09 NOV 2017



CATEGORY	A	B	C	D
LPV DA		443-1	301 (300-1)	
LNAV/VNAV DA		593-1 1/8	451 (500-1 1/8)	
LNAV MDA	540-1	398 (400-1)	540-1 1/8	398 (400-1 1/8)
C CIRCLING	640-1	492 (500-1)	880-2 732 (800-2)	880-2 1/4 732 (800-2 1/4)