

WISE, VIRGINIA

AL-5973 (FAA)

17201

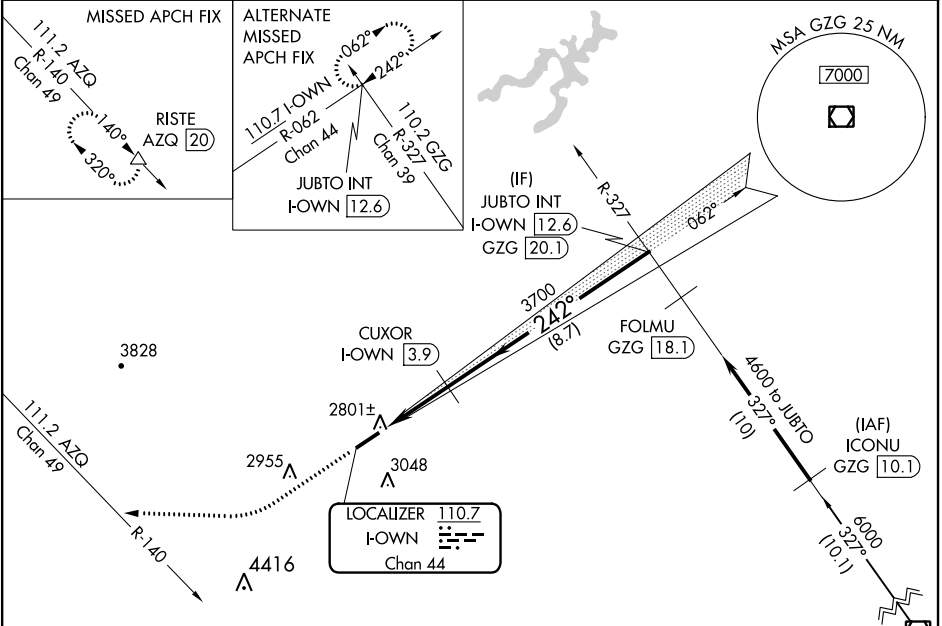
LOC/DME I-OWN 110.7 Chan 44	APP CRS 242°	Rwy Idg TDZE Apt Elev	5280 2684 2684
--	------------------------	-----------------------------	---

LOC/DME RWY 24

LONESOME PINE (LNP)

<p>▼ Visibility reduction by helicopters NA. When local altimeter setting not received, use Virginia Highlands altimeter setting and increase all MDA 160 feet and increase S-LOC and Circling Cats C/D visibility ½ mile.</p> <p>▲</p>	<p>ODALS</p>	<p>MISSED APPROACH: Climb to 3300 then climbing right turn to 6400 via heading 272° and AZQ VOR/DME R-140 to RISTE/AZQ 20 DME and hold.</p>
---	--------------	---

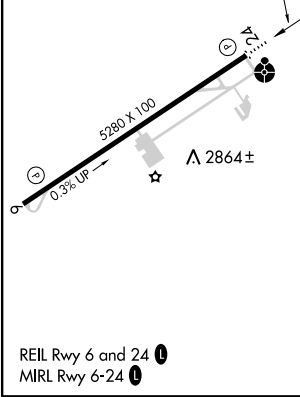
AWOS-3 118.6	INDIANAPOLIS CENTER 126.57 253.5	UNICOM 123.0 (CTAF)
------------------------	--	-------------------------------



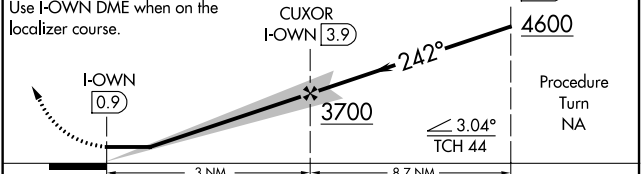
NE-3, 12 OCT 2017 to 09 NOV 2017

NE-3, 12 OCT 2017 to 09 NOV 2017

ELEV 2684	TDZE 2684
-----------	-----------



3300	6400	AZQ R-140	RISTE	VGSI and descent angles not coincident (VGSI Angle 3.00/TCH 36).
	hdg 272°			



CATEGORY	A	B	C	D
S-24		3060-1 376 (400-1)		3060-1½ 376 (400-1½)
CIRCLING	3140-1	456 (500-1)	3240-1½ 556 (600-1½)	3360-2¼ 676 (700-2¼)

WISE, VIRGINIA
Orig-A 03JUN10

36°59'N - 82°32'W

LONESOME PINE (LNP) LOC/DME RWY 24