

WAAS CH 58236 W10A	APP CRS 102°	Rwy Idg TDZE Apt Elev	5350 28 28
--	------------------------	-----------------------------	---------------------------------------

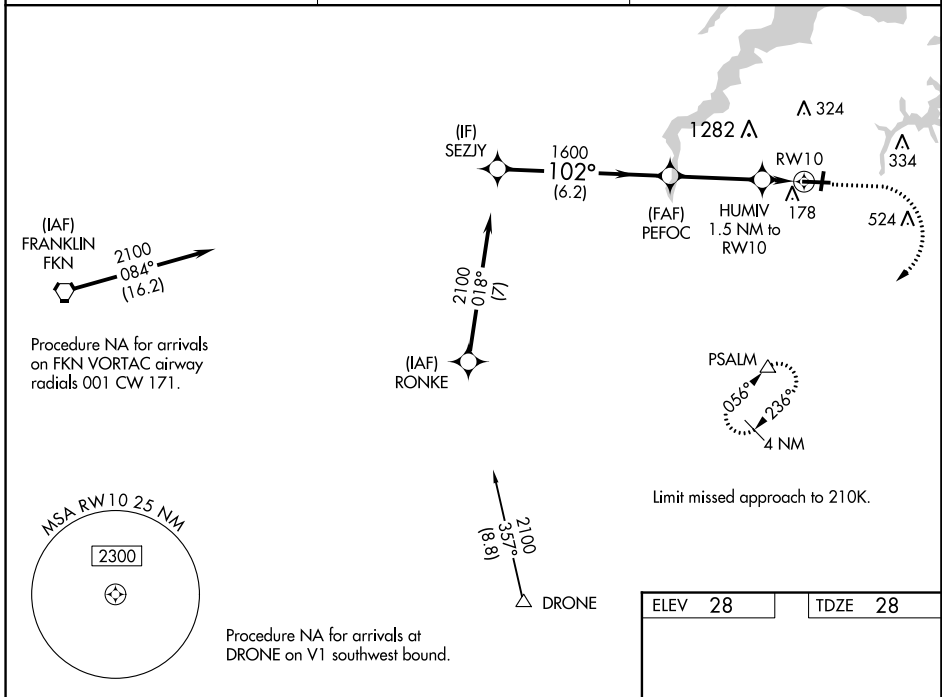
RNAV (GPS) RWY 10

HAMPTON ROADS EXECUTIVE (PVG)

⚠ Baro-VNAV NA when using Norfolk Intl altimeter setting. For uncompensated Baro-VNAV systems, LNAV/VNAV NA below -15°C (5°F) or above 54°C (130°F). DME/DME RNP-0.3 NA. When local altimeter setting not received, use Norfolk Intl altimeter setting and increase all DA 33 feet and all MDA 40 feet; increase LNAV/VNAV all Cats visibility and LNAV Cat C visibility 1/8 mile. Circling NA for Cat C N of Rwy 10-28. Circling NA to Rwy 2 and 20. Helicopter visibility reduction below 1 SM NA.

MISSED APPROACH:
Climb to 1600 then climbing right turn to 2500 direct PSALM and hold.

AWOS-3 118.375	NORFOLK APP CON 118.9 353.7	UNICOM 122.725 (CTAF) 0
--------------------------	---------------------------------------	-----------------------------------



NE-3, 12 OCT 2017 to 09 NOV 2017

NE-3, 12 OCT 2017 to 09 NOV 2017

	SEZJY		PFOC		HUMIV 1.5 NM to RW10	RW10
	2100	102°	1600	1600	2500	PSALM
	GP 3.00° TCH 40				*LNAV only.	
CATEGORY	A	B	C	D		
LPV DA	228-1	200 (200-1)		NA		
LNAV/VNAV DA	432-1 3/8	404 (500-1 3/8)		NA		
LNAV MDA	420-1	392 (400-1)	420-1 1/8 392 (400-1 1/8)	NA		
CIRCLING	500-1	472 (500-1)	780-2 1/4 752 (800-2 1/4)	NA		

