

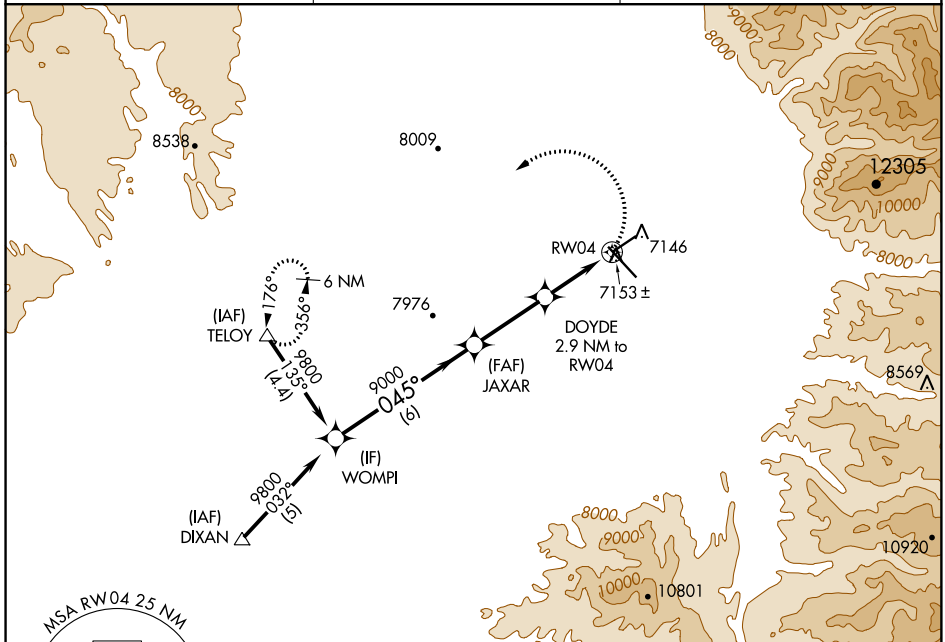
APP CRS <b>045°</b>	Rwy Idg TDZE Apt Elev	<b>5504</b> <b>7068</b> <b>7091</b>
------------------------	-----------------------------	---

# RNAV (GPS) RWY 4

TAOS RGNL (SKX)

-31°C/-24°F DME/DME RNP-0.3 NA If local altimeter setting not received, procedure NA.	MISSED APPROACH: Climbing left turn to 11000 direct TELOY and hold.
---	---

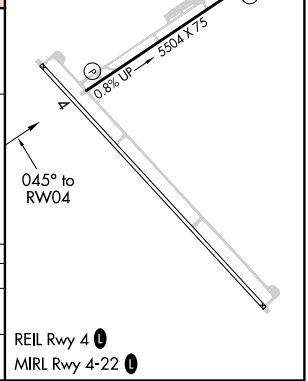
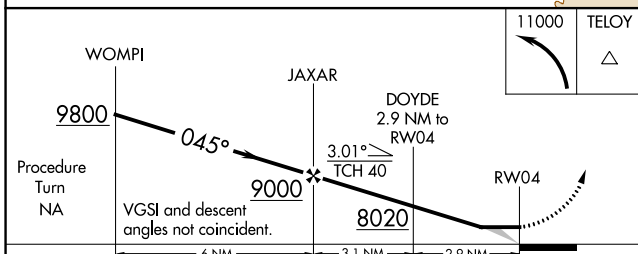
AWOS-3PT <b>132.975</b>	ALBUQUERQUE RADIO <b>122.1R</b>	UNICOM <b>122.8 (CTAF)</b>
----------------------------	------------------------------------	-------------------------------



SW-1, 12 OCT 2017 to 09 NOV 2017

SW-1, 12 OCT 2017 to 09 NOV 2017

ELEV 7091	TDZE 7068
-----------	-----------



CATEGORY	A	B	C	D
LNVA MDA	7480-1	412 (400-1)	7480-1¼	412 (400-1¼)
CIRCLING	7540-1 449 (500-1)	7560-1 469 (500-1)	7600-1½ 509 (600-1½)	7660-2 569 (600-2)