

WAAS CH 42912 W19A	APP CRS 189°	Rwy Idg TDZE Apt Elev	5000 467 473
--	------------------------	-----------------------------	---

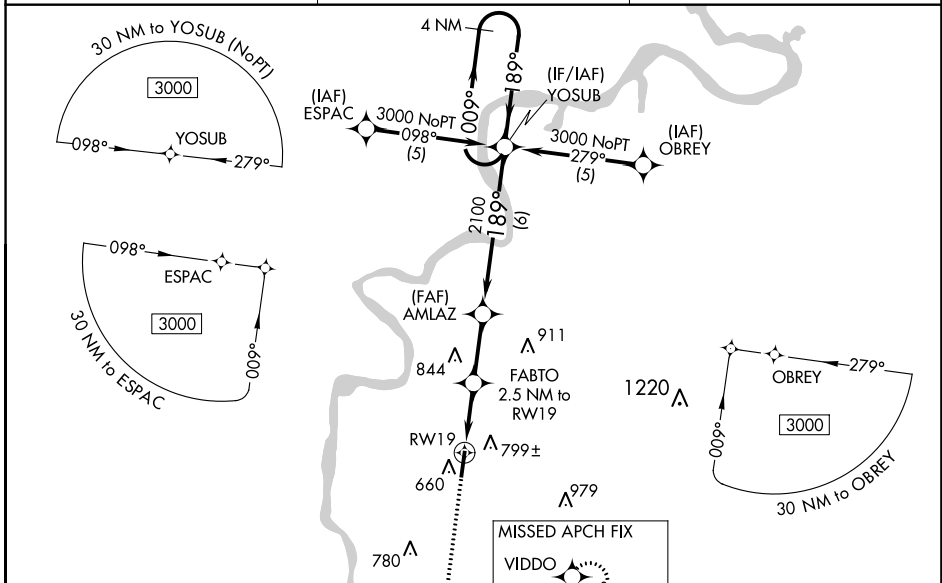
RNAV (GPS) RWY 19

SAVANNAH-HARDIN COUNTY (SNH)

NA Baro-VNAV NA when using Muscle Shoals altimeter setting. For uncompensated Baro-VNAV systems, LNAV/VNAV NA below -15° C (5° F) or above 54° C (130° F). DME/DME RNP-0.3 NA. Visibility reduction by helicopters NA. When local altimeter setting not received use Muscle Shoals, AL altimeter setting and increase all DA 102 feet and all MDA 120 feet and increase LPV visibility all Cats ½ mile, LNAV/VNAV visibility all Cats ¼ mile, LNAV Cat. C visibility ½ mile, Circling Cat. B visibility ¼ mile and Circling Cat. C visibility ½ mile.

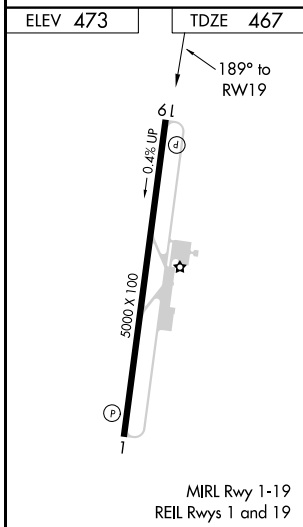
MISSED APPROACH:
Climb to 3000 direct VIDDO and hold.

AWOS-3 133.925	MEMPHIS CENTER 124.35 239.3	UNICOM 122.8 (CTAF)
--------------------------	---------------------------------------	-------------------------------



SE-1, 12 OCT 2017 to 09 NOV 2017

SE-1, 12 OCT 2017 to 09 NOV 2017



3000	VIDDO	YOSUB	4 NM Holding Pattern
* LNAV Only	FABTO 2.5 NM to RWY 19	AMLAZ	GP 3.00° TCH 35
RWY 19	*1280	2100	
2.5 NM	2.5 NM	6 NM	
CATEGORY	A	B	C
LPV DA	873-1½ 406 (400-1½)		NA
LNAV/VNAV DA	999-2 532 (600-2)		NA
LNAV MDA	1060-1 593 (600-1)	1060-1½ 593 (600-1½)	NA
CIRCLING	1100-1 627 (700-1)	1100-1¾ 627 (700-1¾)	NA