

| | | | |
|--|------------------------|-----------------------------|---|
| WAAS CH 58212 W01A | APP CRS 009° | Rwy Ldg TDZE Apt Elev | 5000 473 473 |
|--|------------------------|-----------------------------|---|

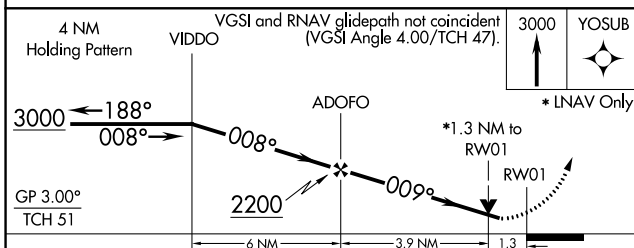
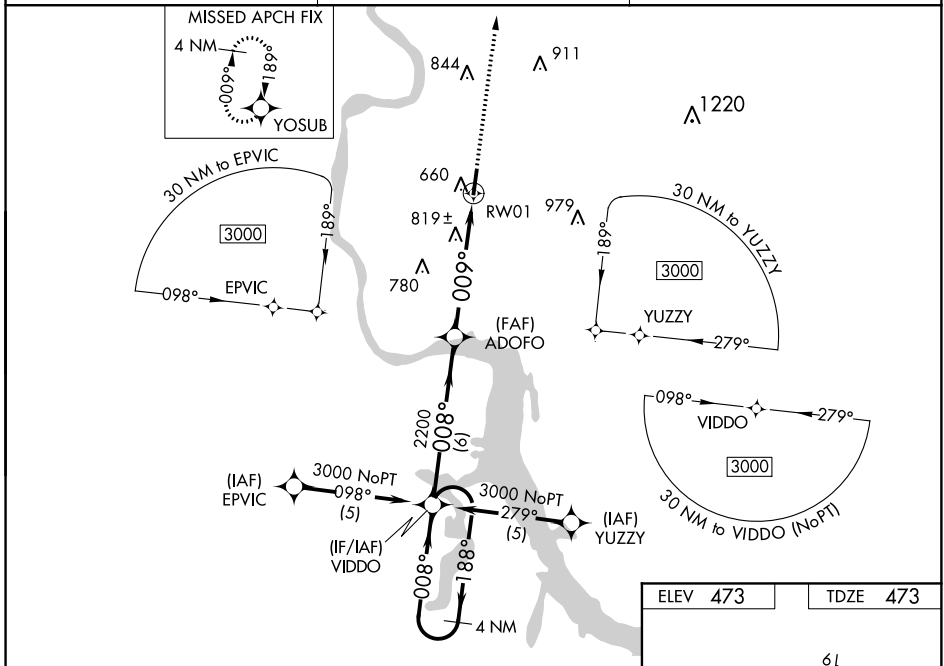
RNAV (GPS) RWY 1

SAVANNAH-HARDIN COUNTY (SNH)

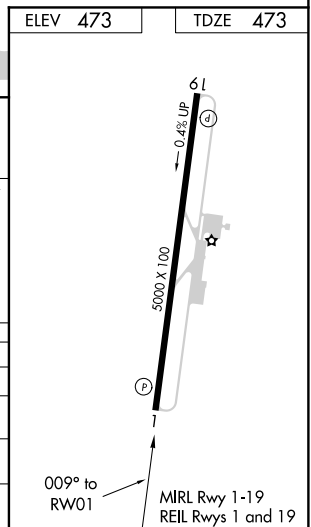
Baro-VNAV NA when using Muscle Shoals altimeter setting. For uncompensated Baro-VNAV systems, LNAV/VNAV NA below -15° C (5° F) or above 54° C (130° F). DME/DME RNP-0.3 NA. Visibility reduction by helicopters NA. When local altimeter setting not received, use Muscle Shoals, AL altimeter setting and increase all DA 102 feet and all MDA 120 feet and increase LPV and LNAV/VNAV all Cats. visibility ½ mile, LNAV Cat. C visibility ¼ mile, Circling Cat. B visibility ¼ mile and Circling Cat. C visibility ½ mile. VDP NA when using Muscle Shoals altimeter setting.

MISSED APPROACH: Climb to 3000 direct YOSUB and hold.

| | | |
|--------------------------|---------------------------------------|-------------------------------|
| AWOS-3 133.925 | MEMPHIS CENTER 124.35 239.3 | UNICOM 122.8 (CTAF) |
|--------------------------|---------------------------------------|-------------------------------|



| CATEGORY | A | B | C | D |
|--------------|---------|--------------|-------------------------|----|
| LPV DA | 845-1¼ | 372 (400-1¼) | | NA |
| LNAV/VNAV DA | 1188-2½ | 715 (800-2½) | | NA |
| LNAV MDA | 1080-1 | 607 (700-1) | 1080-1¾ 607 (700-1¾) | NA |
| CIRCLING | 1100-1 | 627 (700-1) | 1100-1¾ 627 (700-1¾) | NA |



SE-1, 12 OCT 2017 to 09 NOV 2017

SE-1, 12 OCT 2017 to 09 NOV 2017