

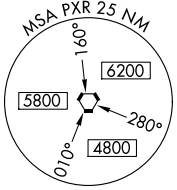
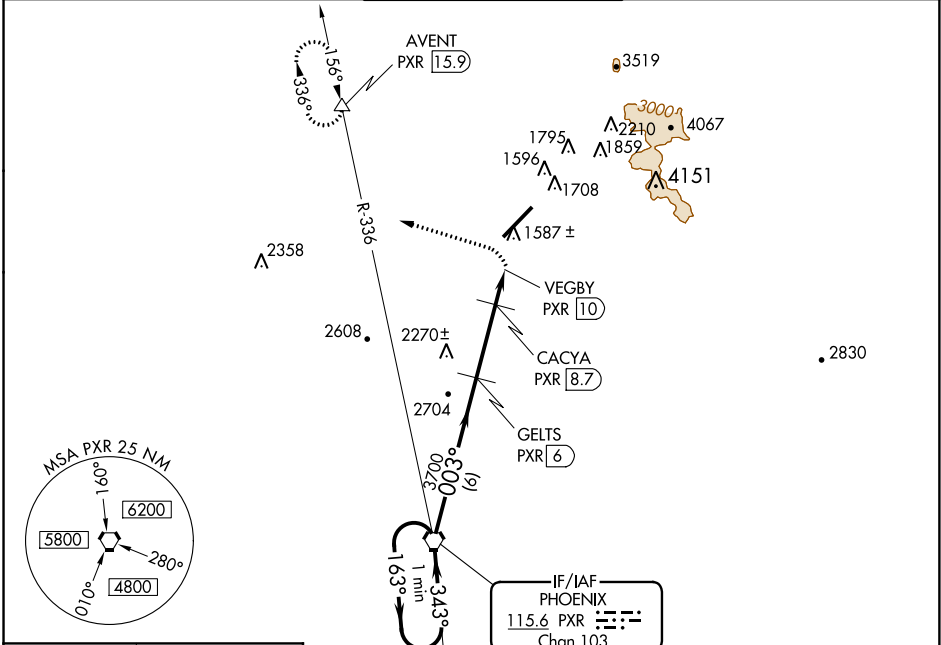
VORTAC PXR <b>115.6</b> Chan <b>103</b>	APP CRS <b>003°</b>	Rwy Idg TDZE Apt Elev <b>1510</b>	<b>N/A</b> <b>N/A</b>
---	------------------------	--	--------------------------

**VOR/DME-A**  
SCOTTSDALE (SDL)

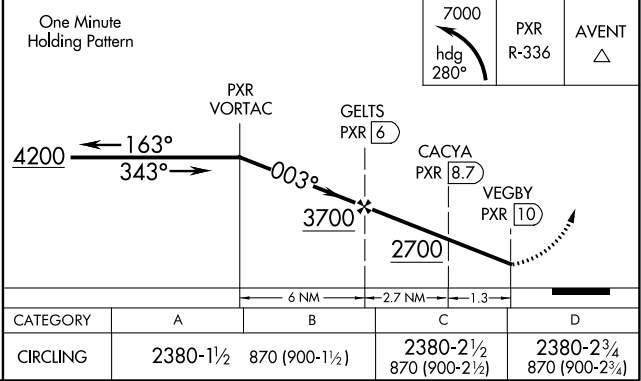
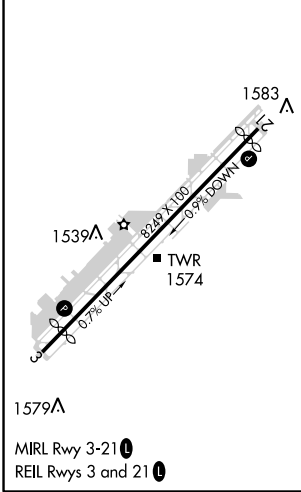
**⚠** When local altimeter setting not received, use Phoenix Sky Harbor altimeter setting and increase all MDAs 100 feet and Cat C visibility ¼ mile.

**⚠** MISSED APPROACH: Climbing left turn to 7000 on heading 280° and on PXR VORTAC R-336 to AVENT/PXR 15.9 DME and hold, continue climb-in-hold to 7000.

ATIS <b>118.6</b>	PHOENIX APP CON <b>120.7 239.0</b>	SCOTTSDALE TOWER ★ <b>119.9 (CTAF) 0</b>	GND CON <b>121.6</b>	CLNC DEL <b>124.8</b>
----------------------	---------------------------------------	---	-------------------------	--------------------------



ELEV 1510 **D**



SW-4, 12 OCT 2017 to 09 NOV 2017

SW-4, 12 OCT 2017 to 09 NOV 2017