

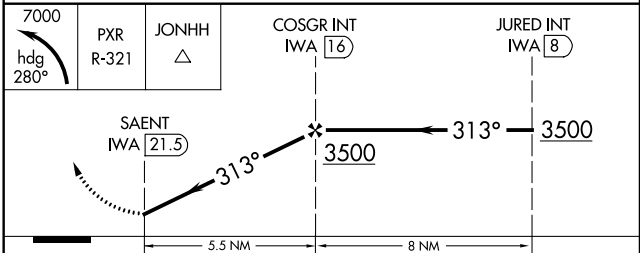
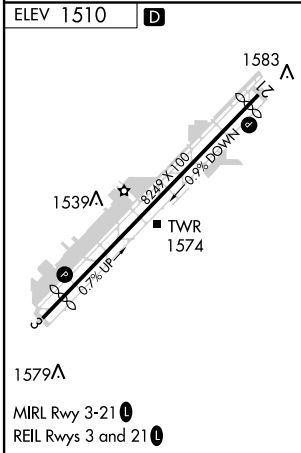
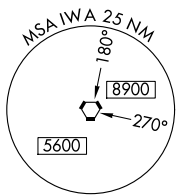
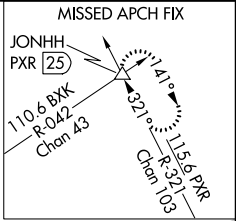
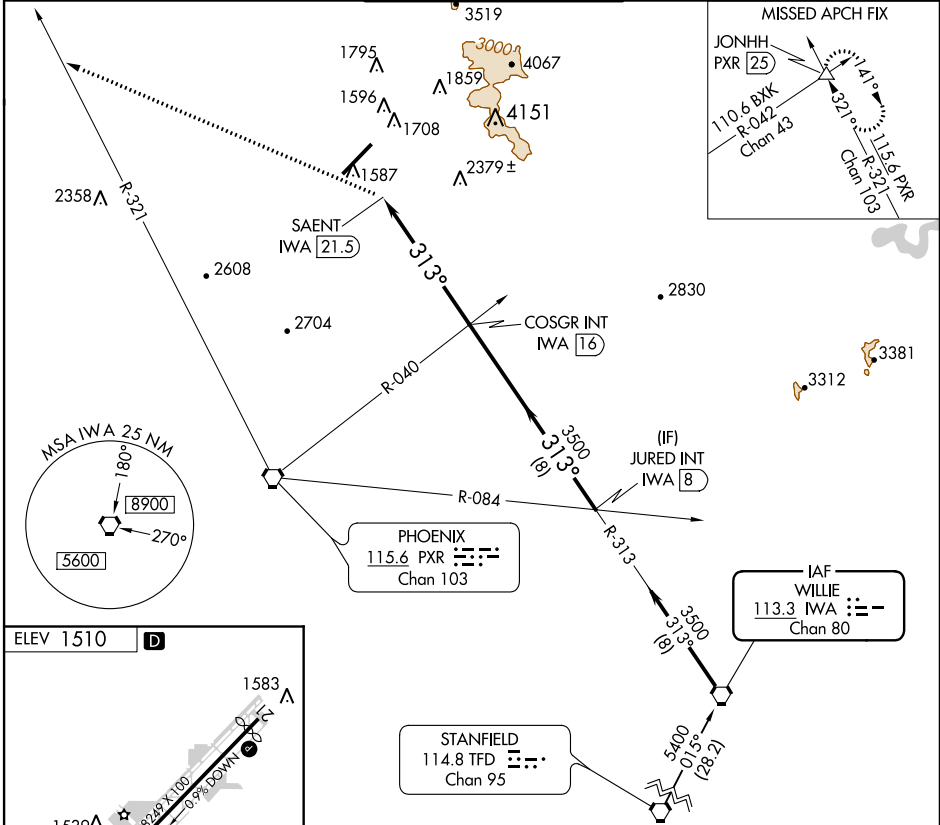
VORTAC IWA 113.3 Chan 80	APP CRS 313°	Rwy Idg TDZE Apt Elev 1510	N/A N/A 1510
--	------------------------	---	---------------------------

VOR-C
SCOTTSDALE (SDL)

⚠ When VGSI inoperative, circling Rwy 21 NA at night.
⚠ When local altimeter setting not received, use Phoenix Sky Harbor Int'l altimeter setting and increase all MDA 100 feet and Cat C visibility 1/4 mile.

MISSED APPROACH: Climbing left turn to 7000 on heading 280° and PXR R-321 to JONHH INT/PXR 25 DME and hold, continue climb-in-hold to 7000.

ATIS 118.6	PHOENIX APP CON 120.7 239.0	SCOTTSDALE TOWER ★ 119.9 (CTAF) 0	GND CON 121.6	CLNC DEL 124.8
----------------------	---------------------------------------	---	-------------------------	--------------------------



FAF to MAP 5.5 NM					
Knots	60	90	120	150	180
Min:Sec	5:30	3:40	2:45	2:12	1:50
CATEGORY	A		B		C
CIRCLING	2440-2		930 (1000-2)		2440-2 3/4 930 (1000-2 3/4)
					2440-3 930 (1000-3)

SW-4, 12 OCT 2017 to 09 NOV 2017

SW-4, 12 OCT 2017 to 09 NOV 2017